



**The Williams Brothers
Corporation
of America**



Uncompromising Quality. When only the best will do, trust
The Williams Brothers Corporation of America

Fire Rated, General Purpose, Drywal & Plaster, Roof & Floor Hatches, Access Ladders & Railings



**The Williams Bros.
Corporation of
America**

WB PRODUCT WARRANTY: The Williams Brothers Corporation of America (the "Seller") provides the following warranty of its goods: All goods sold hereunder are warranted to be free from defects in material and workmanship for a period of one (1) year. The purchaser agrees that he will inspect the goods upon delivery. Every claim for defective material or workmanship or negligence or from any other cause shall be deemed waived by the purchaser unless made to the Seller in writing within ninety (90) days of the date of shipment from purchaser to purchasers' customer provided that all such claims for goods restocked for resale must be submitted in writing to the Seller within one (1) year from receipt by purchaser of the goods to which such claims relate. Defective goods for which a valid claim has been made shall be returned to the Seller and defective goods so returned will be replaced or repaired without charge, but the Seller shall not be liable for any other loss, damage or expense, **INCLUDING BUT NOT LIMITED TO CONSEQUENTIAL DAMAGES**, directly or indirectly arising from the condition or use of the goods or from any other cause, the exclusive remedy against the Seller being to require the replacement or repair of defective goods. **THIS WARRANTY IS THE SOLE AND EXCLUSIVE WARRANTY PROVIDED TO THE PURCHASER. THERE ARE NO WARRANTIES WHICH EXTEND BEYOND THE DESCRIPTION OF THE FACE HEREOF. THE SELLER HEREBY DISCLAIMS ALL OTHER WARRANTIES, EXPRESS AND IMPLIED, INCLUDING BUT NOT LIMITED TO THE IMPLIED WARRANTIES OF MERCHANTABILITY AND FITNESS FOR A PARTICULAR PURPOSE.**

A MESSAGE FROM THE PRESIDENT

The access door industry in the 21st century is one that requires in-depth knowledge of the industry, constant customer contact and adaptability to the changing demands of the marketplace. We continue to accomplish that in this competitive business environment. Although we are able to be flexible in the market both nationally and internationally, one thing has remained constant through the years: Our absolute commitment to the highest and most consistent quality of our products in the access door industry.

In this interactive age of the internet and a time when information from around the world is instantaneous, you can download our catalog, find our submittal sheets and architectural specifications on our website at www.wbdoors.com. Our website is actively browsed on Google and other search engines and we have the capability to track those inquiries from around the globe. We have completely upgraded our operating computer system to manage our expanding distributor base, new products and to offer instant e-mail tracking for our customers. We have become more "green" by doing our work electronically so we reduce paper consumption.

In addition to our extensive line of access doors, we have increased our product line to include stairway ladders, floor doors, roof hatches and architectural access doors and much more, so that we are able to meet every need your customers may have. This one-stop-shopping approach saves you time and freight, which is important to everyone's bottom line.

Thank you for choosing The Williams Brothers Corporation of America as your vendor and we look forward to a continued mutually beneficial working relationship.

George K. E. Williams
President

See our full product
line and download
submittals and
CAD drawings at
www.wbdoors.com



Also download our
Strike First **FIRE PROTECTION**
and **SAFETY PRODUCT**
Catalog at
www.strikefirstusa.com



Corporate Office, 1330 Progress Drive, Front Royal, VA 22630



Western Distribution Center, 4058 S. McCarran Blvd., Bldg. A, Reno, NV 89502

CALL US AT 1-800-255-5515

See our full product line and download submittals and CAD drawings at: www.wbdoors.com

IMPORTANT INFORMATION

PLEASE NOTE: We have made every effort to make this catalog complete and accurate. We reserve the right, however, to make changes at any time, without notice, in prices, materials, equipment, specifications, models and availability.

Specifications, dimensions, measurements, and other numbers in this catalog and other printed materials provided regarding these products are approximates based upon design and engineering drawings and prototypes. Your specific door may differ slightly due to variations in manufacture and equipment.


In addition, some information may have been updated since the time of printing, please contact customer service for complete details on all products.

WBCA assumes no liability for incorrect, improper or faulty installation of any of our products, or for use of our products other than their intended purposes.

GASKETING: Weather resistive gasketing, closed cell sponge, blend of Neoprene/EPDM/SBR. Meets ASTM D-1056: SCE 41, RE 41, 2A1; substrate UL 94HF-1 recognized.

Hot Smoke Seal™ fire tested: Listed to meet the requirements of standards UL10B, UL10C, UBC 7-2, Part 1 and BS476: 1987 for application to fire rated door assemblies.

Exterior Door: (page 17) Open celled microcellular polyurethane on inside of door. Closed cell neoprene sponge SC42 W/PSA stripping gasketing on the back of the door.

INSULATION:  **Thermafiber**® Industrial Felt insulation for optimal fire protection (rated noncombustible by NFPA Standard 220 when tested in accordance with ASTM E136 and withstands ASTM E119) and superior sound control USG tested per ASTM C165: 8 pcf STC 15-2" thickness.

INSULATION: **GreenGuard**® Extruded Polystyrene insulation board, with R-Value @ 75°F Mean 5.0 x 2. R means resistance to heat flow. The higher the R-Value the greater the insulating power and energy saving capability. Compliance: BOCA 90-78, SBCCI 2228A, ICBO 4280, CA BHF TB 1334, MN Dept. of Energy Chapter 7640, CCMC 12722-L, Und. Lab. Inc.® See Classification Certificate A183. FM Approved.

INSULATION: **TUFF-R**™ Patented polyisocyanurate foam core insulation boards for the WB AL 1500 Series door only, with R-Value @ 75°F Mean 6.5. Compliance: IBC/IRC, ICBO, BOCA, SBCCI and ASTM D1289 type 1, Class 1.

FIRE RATING:

[WB FR PRE 700 Series Premium Heavy Duty Access Door](#)



UL, Northbrook, IL: 1-1/2 hour "B" level 450 degrees F (250 degrees C) maximum temperature rise in 30 minutes for vertical wall installations only. This door may be used in a two hour fire rated wall assembly

Warnock Hersey International; Pittsburgh, CA: 1-1/2 hour fire rated for vertical wall assembly only – **Issue # 7165**

[WB FR 800, 820 & 830 Series Standard Access Door](#)

Floor and Ceiling Assembly:

UL, Northbrook, IL: 1-1/2 hour "B" label 450 degrees F (250 degrees C) maximum temperature rise in 30 minutes for vertical wall installations only. **Test file number R-10364.** This door may be used in a two hour fire rated wall assembly

Warnock Hersey International; Pittsburgh, CA: 1 hour fire rated combustible floor and ceiling assembly – **Report # WHI-495-PSH-0191**

Warnock Hersey International; Pittsburgh, CA: 3 hour fire rated non-combustible floor and ceiling assembly – **Report # WHI-495-PSH-0192**

[WB FR U 810 Series Standard Ultra Access Door](#)

UL, Northbrook, IL: 1-1/2 hour "B" label 450 degrees F (250 degrees C) maximum temperature rise in 30 minutes for vertical wall installations only. **Test file number R-10364.** This door may be used in a two hour fire rated wall assembly

Warnock Hersey International; Pittsburgh, CA: 1 hour fire rated combustible floor and ceiling assembly – **Report # WHI-495-PSH-0191**

Warnock Hersey International; Pittsburgh, CA: 3 hour fire rated non-combustible floor and ceiling assembly – **Report # WHI-495-PSH-0192**

[WB FR Basic 900 Series Uninsulated Access Door](#)

UL, Northbrook, IL: 1-1/2 hour. "B" label, no temperature rise for vertical wall installations only. **Test file number - R-10364**

All fire rated tested doors meet or exceed NFPA 252 and NFPA 80 standards.

CONTENTS

Premium Metal Access Door Division

GP 100 Series (General Purpose)	5
UAD 200 Series (Utility Access Door)	6
BASIC 300 Series (Most Economical Door)	6
RP 110 Series (Removable Panel)	7
SMP 120 Series (Surface Mounted Panel)	7
DW 400 Series (Drywall Access Door)	7
RDW 410 Series (Recessed Drywall)	8
AT 600 Series (Acoustical Tile)	8
ATR 610 Series (Acoustical Tile Ceiling)	8
WB PL 500 Series (Plaster)	9
WB AP 510 Series (Acoustical Plaster)	9
WB FR 800 Series (Fire Rated Standard)	11
WB FRU 810 Series (Fire Rated Standard Ultra)	11
WB FR PRE 700 Series (Fire Rated Premium Heavy Duty)	12
WB FRB 900 Series (Fire Rated Basic Uninsulated)	12
WB FR DW 820 Series (Fire Rated Standard Drywall)	13
WB FR PL 830 Series (Fire Rated Standard Plaster)	13
WB GY 3000 Series (Lightweight Gypsum)	14
WB GY 3100 Series (Lightweight Gypsum Hinged)	14
WB MD SEC 1000 Series (Medium Security)	15
WB HG SEC 1100 Series (High Security)	15
WB TB 1200 Series (Drop-In Ceiling)	16
WB MAP (Plastic Reversible Panel)	16
WB EXT 1300 Series (Exterior Access Door)	17
WB ADC/ADH 1400 Series (True Fit Duct)	17
WB AL 1500 Series (Aluminum)	18
WB AL 4000 Series (Aluminum)	18
WB WIN 1700 Series (Insulated Walk-In Duct Door)	19
WB ADWT Airtight/Watertight Access Door	19
Available Optional Accessories	20

Roof and Floor Access Division

WB-Roof Hatch	21
WB Guard Railing System	21
WB Safety Grab	22
WB Safety Post	22
LadderUp® Safety Post	22
Bil-Guard® Hatch Railing System	23
Enhanced Performance Roof Hatch Options	23
Locking Options for Roof, Vault and Sidewalk Doors	24
Type S & E Roof Hatch	24
Type NB Ship Stair Access	25
Type L Service Stair Access	25
Type GS Ladder Access	26
Versa Mount® Access Hatch	26
Type DSH Automatic Fire Vent	27
Type SV Fire Vent	27
Lumivent® Automatic Fire Vent	28
Type J-AL & JD-AL Aluminum Drainage Door	28
Type J-AL H20, JD-AL H20 Aluminum Drainage Door	29
Type J-H20, JD-H20 Steel Drainage Door	29
Type J & JD Steel Drainage Door	30
Type K & KD Floor Hatch	30
Type Q Floor Hatch	31
Type T & TD Floor Hatch	31
Type TER & TRD Floor Hatch	32
Type FR & FRLC Fire Rated Floor Hatch	32
Classic Series Residential Basement Door	33
Classic Series Sloped Wall Residential Basement Door	33
Ultra Series Residential Basement Door	33
WB WB Fixed Vertical Ladders	34
WB Super Simplex Disappearing Stairway	35
WB Fire Rated Ladder Access Hatch	35



WB General Purpose Access Doors

See pages 5 - 9

**Distinct
Unsurpassed
Uncomparable**

WB-GP PREMIUM – BEST!

- The **WB-GP PREMIUM** is the industry's **PREMIER** door
- The **CHOICE** of building professionals and architecturally **SPECIFIED** nationwide
- One piece unlock welded construction on all 4 sides of our recessed trim
- **LASER CUT** from one sheet of cold rolled steel
- Features our **UNIQUE FULLY CONCEALED** offset hinge up to 24"x 24" (over is semi-concealed)
- Optional **GASKETING**, weather resistive neoprene gasketing on all 4 sides
- Available with Best Lock

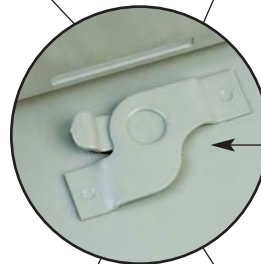
WB-UAD – BETTER!

- The **WB-UAD** is an innovatively designed **COST EFFECTIVE** access door for walls and ceilings
- Offering lateral strength **UNIWELD CONSTRUCTION** with full perimeter welding of door to return frame
- All doors have semi-concealed hinge
- Optional weather resistive neoprene gasketing on 3 sides
- 16 ga. steel throughout
- Available with Best Lock

WB-BASIC – GOOD!

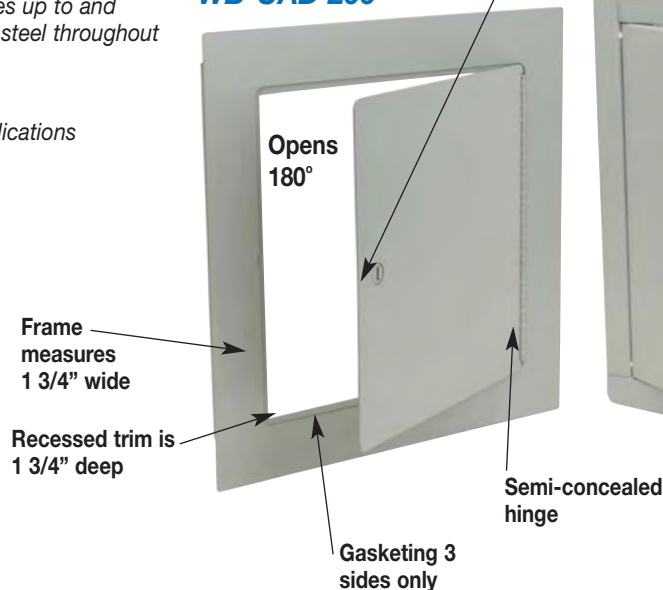
- The **WB-BASIC SERIES** is our **LEAST EXPENSIVE** access door for multi-use application for wall and ceiling use
- Pin hinge top and bottom
- 18 ga. steel throughout sizes up to and including 16" x 16", 16 ga. steel throughout sizes 18" x 18" and larger
- Cannot be gasketed
- Galvanized for exterior applications

WB-GP 100 Premium

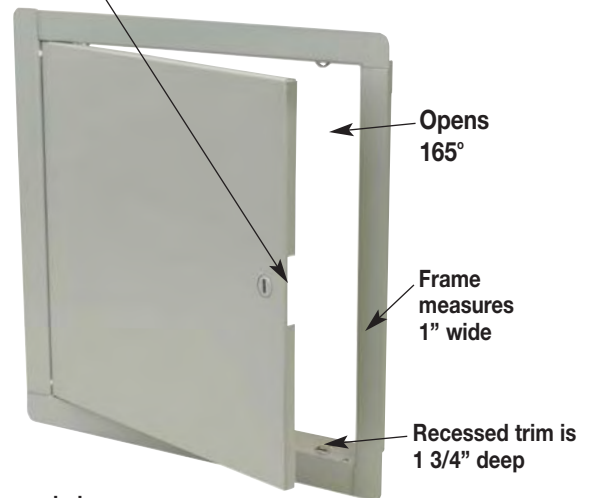


- Flush, stainless steel **CAM LATCH** opens with screwdriver
- **CAM LATCH** design is **UNIQUE AND BEST** to keep door secure at all times
- **RUST RESISTIVE**

WB-UAD 200



WB-Basic 300



WB GP 100 Series Premium Access Door

BEST!

This precision-flush access door for wall and ceiling installation far surpasses other doors because its surround trim is welded on all four sides to the return frame providing strength and rigidity.

Construction Specifications:

Door: 14 ga. steel, trim is 1-1/2" wide

Frame: 18 ga. steel 1-3/4" depth

Hinges: Fully-concealed offset hinge up to and including 24 x 24 allows opening to 165°, **over 24 x 24 is semi-concealed allowing 180°**

Latches: Flush, stainless steel cam latch

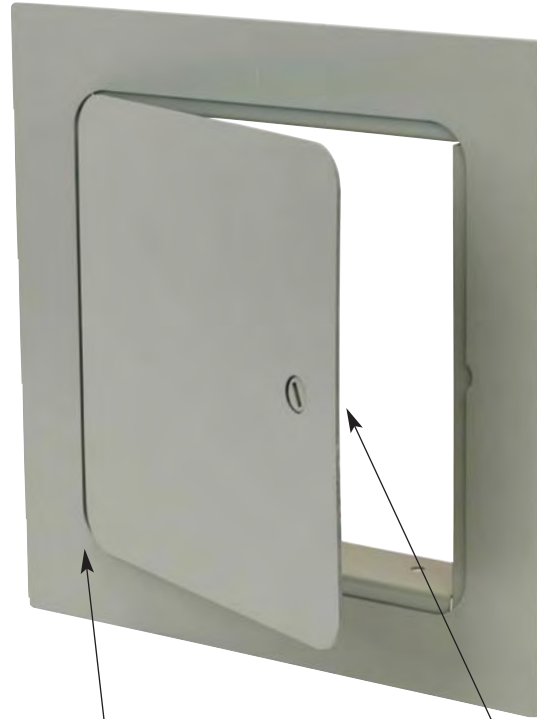
Finish: Grey baked enamel coat

Options:

- + Stainless Steel Type 304 No. 4 and Type 316 No. 4 Satin Finish brushed
- + WB 151 Key Code Cylinder locks-keyed alike with 2 keys per lock
- + Mortise Lock or locks by others
- + Weather resistive neoprene gasketing all 4 sides
- + Special sizes available

Standard Sizes:

Model No.	Door Size	Wall Opening	Cam Latch	Shipping Wt Lbs.
GP 100	6 x 6	6 1/4 x 6 1/4	1	4
GP 100	8 x 8	8 1/4 x 8 1/4	1	5
GP 100	8 x 12	8 1/4 x 12 1/4	1	6
GP 100	10 x 10	10 1/4 x 10 1/4	3	6
GP 100	12 x 12	12 1/4 x 12 1/4	3	8
GP 100	12 x 16	12 1/4 x 16 1/4	3	10
GP 100	12 x 18	12 1/4 x 18 1/4	3	11
GP 100	12 x 24	12 1/4 x 24 1/4	4	15
GP 100	14 x 14	14 1/4 x 14 1/4	3	10
GP 100	16 x 16	16 1/4 x 16 1/4	3	13
GP 100	16 x 20	16 1/4 x 20 1/4	3	16
GP 100	18 x 18	18 1/4 x 18 1/4	3	14
GP 100	18 x 24	18 1/4 x 24 1/4	4	18
GP 100	20 x 24	20 1/4 x 24 1/4	4	21
GP 100	20 x 30	20 1/4 x 30 1/4	4	23
GP 100	22 x 22	22 1/4 x 22 1/4	4	22
GP 100	22 x 30	22 1/4 x 30 1/4	4	25
GP 100	22 x 36	22 1/4 x 36 1/4	5	32
GP 100	24 x 24	24 1/4 x 24 1/4	4	24
GP 100	24 x 30	24 1/4 x 30 1/4	4	27
GP 100	24 x 36	24 1/4 x 36 1/4	5	35
GP 100	24 x 48	24 1/4 x 48 1/4	6	43
GP 100	30 x 30	30 1/4 x 30 1/4	6	32
GP 100	36 x 36	36 1/4 x 36 1/4	7	44
GP 100	36 x 48	36 1/4 x 48 1/4	8	57
GP 100	48 x 48	48 1/4 x 48 1/4	12	70

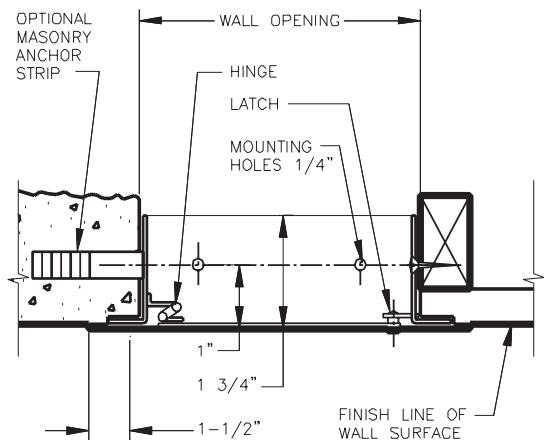


Fully concealed offset hinges up to 24 x 24



Flush, stainless steel cam latch opens with screwdriver

SECTION DETAIL:



WB UAD 200 Series Utility Access Door

BETTER!

Innovative cost effective access door. Return frame and uniweld construction allows for an aesthetically pleasing appearance and square fit in all wall and ceiling applications.

Standard Sizes:

Model No.	Door Size	Wall Opening	Cam Latch	Shipping Wt Lbs.
UAD 200	6 x 6	6 1/8 x 6 1/8	1	4
UAD 200	8 x 8	8 1/8 x 8 1/8	1	5
UAD 200	8 x 12	8 1/8 x 12 1/8	1	7
UAD 200	10 x 10	10 1/8 x 10 1/8	1	7
UAD 200	12 x 12	12 1/8 x 12 1/8	1	8
UAD 200	12 x 16	12 1/8 x 16 1/8	1	10
UAD 200	12 x 18	12 1/8 x 18 1/8	1	11
UAD 200	14 x 14	14 1/8 x 14 1/8	3	11
UAD 200	16 x 16	16 1/8 x 16 1/8	3	13
UAD 200	16 x 20	16 1/8 x 20 1/8	3	14
UAD 200	18 x 18	18 1/8 x 18 1/8	3	15
UAD 200	18 x 24	18 1/8 x 24 1/8	4	19
UAD 200	20 x 24	20 1/8 x 24 1/8	4	20
UAD 200	22 x 22	22 1/8 x 22 1/8	4	21
UAD 200	22 x 30	22 1/8 x 30 1/8	5	27
UAD 200	22 x 36	22 1/8 x 36 1/8	5	30
UAD 200	24 x 24	24 1/8 x 24 1/8	4	24
UAD 200	24 x 30	24 1/8 x 30 1/8	5	28
UAD 200	24 x 36	24 1/8 x 36 1/8	5	32
UAD 200	24 x 48	24 1/8 x 48 1/8	5	40
UAD 200	30 x 30	30 1/8 x 30 1/8	6	34
UAD 200	36 x 36	36 1/8 x 36 1/8	6	45

Construction Specifications:

Door: 16 ga. steel, trim is 1-3/4" wide

Frame: 16 ga. steel 1-3/4" depth

Hinge: Full length semi-concealed piano type hinge

Latches: Flush, stainless steel cam latch

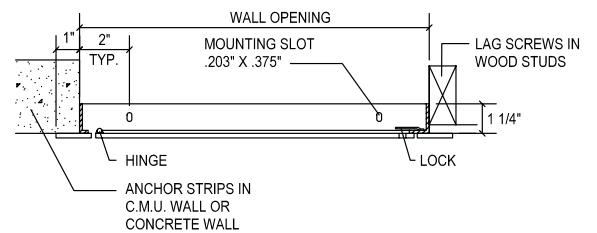
Finish: Grey baked enamel coat

Options:

- + Stainless Steel Type 304 No. 4 and Type 316 No. 4 Satin Finish brushed
- + WB 151 Key Code Cylinder locks-keyed alike with 2 keys per lock
- + Mortise Lock or locks by others
- + Weather resistive neoprene gasketing 3 sides
- + Special sizes available



SECTION DETAIL:



WB BASIC 300 Series Access Door

GOOD!

This cost effective access door is satin coat galvanized with a grey baked enamel finish. This door is for indoor and outdoor use. When price is an issue, bid any job with confidence using the WB-Basic Door.

Standard Sizes:

Model No.	Door Size	Wall Opening	Cam Latch	Shipping Wt Lbs.
BASIC 300	6 x 6	6 1/4 x 6 1/4	1	2
BASIC 300	8 x 8	8 1/4 x 8 1/4	1	3
BASIC 300	10 x 10	10 1/4 x 10 1/4	1	4
BASIC 300	12 x 12	12 1/4 x 12 1/4	1	5
BASIC 300	14 x 14	14 1/4 x 14 1/4	3	6
BASIC 300	16 x 16	16 1/4 x 16 1/4	3	8
BASIC 300	18 x 18	18 1/4 x 18 1/4	3	9
BASIC 300	20 x 20	20 1/4 x 20 1/4	3	11
BASIC 300	22 x 22	22 1/4 x 22 1/4	4	13
BASIC 300	22 x 30	22 1/4 x 30 1/4	5	14
BASIC 300	24 x 24	24 1/4 x 24 1/4	4	14
BASIC 300	24 x 36	24 1/4 x 36 1/4	5	15
BASIC 300	30 x 30	30 1/4 x 30 1/4	7	19

Construction Specifications:

Door & Frame: 18 ga. steel. (up to and including 16"x 16")

Door & Frame: 16 ga. steel (18"x 18" and up to 24"x 24")

Finish: Grey baked enamel coat

Hinge: Pin hinge top and bottom.

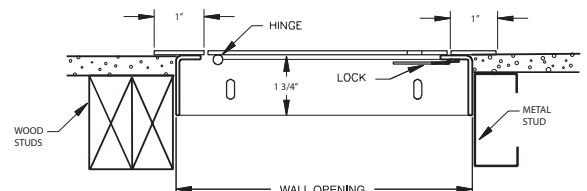
Latches: Flush, stainless steel cam latch

Options:

- + Stainless Steel Type 304 No. 4 and Type 316 No. 4 Satin Finish brushed and non-brushed
- + WB 151 Key Code Cylinder locks-keyed alike with 2 keys per lock
- + This door cannot be gasketed
- + Special sizes available



SECTION DETAIL:



WB RP 110 Series Removable Panel Access Door

Designed with the same quality features as our GP Premium door, but primarily designed for use in confined areas. Simply unscrew the cam latches, and the panel can be easily removed.

Construction Specifications:

Door: 14 ga. steel, 1 1/2" trim

Frame: 18 ga. steel with 1 3/4" depth

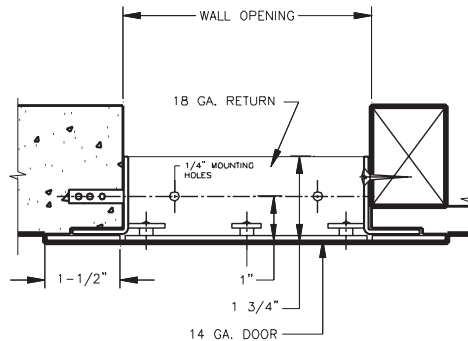
Latches: Flush, stainless steel cam latches on all 4 sides.

Finish: Grey baked enamel coat

Options:

- + Stainless Steel Type 304 No. 4 and Type 316 No. 4 Satin Finish brushed
- + WB 151 Key Code Cylinder locks-keyed alike with 2 keys per lock
- + Mortise Lock or locks by others
- + Weather resistive neoprene gasketing 4 sides
- + Special sizes available

SECTION DETAIL:



Standard Sizes:

Model No.	Door Size	Wall Opening	Cam Latch	Shipping Wt Lbs.
RP 110	8 x 8	8 1/4 x 8 1/4	4	3
RP 110	12 x 12	12 1/4 x 12 1/4	4	8
RP 110	18 x 18	18 1/4 x 18 1/4	4	13
RP 110	24 x 24	24 1/4 x 24 1/4	8	20

WB SMP 120 Series Surface Mounted Access Door

When access is a requirement without a framed opening, our precision fit surface mounted access door is the solution in all types of walls and ceilings.

Construction Specifications:

Door: 14 ga. steel, 1 1/2" trim

Door Stops: 18 ga. steel on 3 sides of door opening

Hinges: Full length piano hinge allows door to open to 180°

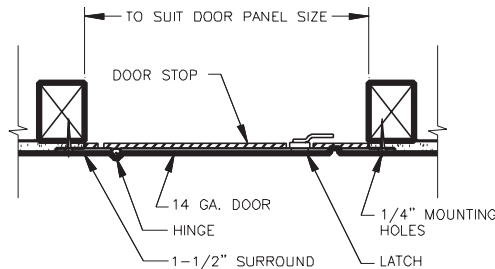
Latches: Flush, stainless steel cam latch

Finish: Grey baked enamel coat

Options:

- + Stainless Steel Type 304 No. 4 and Type 316 No. 4 Satin Finish brushed
- + WB 151 Key Code Cylinder locks-keyed alike with 2 keys per lock
- + Weather resistive neoprene gasketing 4 sides
- + Special sizes available

SECTION DETAIL:



Standard Sizes:

Model No.	Door Size	Wall Opening	Cam Latch	Shipping Wt Lbs.
SMP 120	8 x 8	To Suit Door Panel Size	1	4
SMP 120	12 x 12		1	5
SMP 120	16 x 16		3	10
SMP 120	18 x 18		3	14
SMP 120	24 x 24		4	18

WB DW 400 Series for Drywall Access Door

A quality flush panel door with a tape-in drywall bead flange, eliminates visual distraction created by projecting, surface-mounted units.

Standard Sizes:

Model No.	Door Size	Wall Opening	Cam Latch	Shipping Wt Lbs.
DW 400	8 x 8	8 1/4 x 8 1/4	1	4
DW 400	10 x 10	10 1/4 x 10 1/4	1	5
DW 400	12 x 12	12 1/4 x 12 1/4	3	7
DW 400	12 x 24	12 1/4 x 24 1/4	2	12
DW 400	14 x 14	14 1/4 x 14 1/4	3	9
DW 400	16 x 16	16 1/4 x 16 1/4	3	11
DW 400	18 x 18	18 1/4 x 18 1/4	3	12
DW 400	20 x 20	20 1/4 x 20 1/4	4	15
DW 400	22 x 22	22 1/4 x 22 1/4	4	18
DW 400	22 x 30	22 1/4 x 30 1/4	4	24
DW 400	22 x 36	22 1/4 x 36 1/4	5	27
DW 400	24 x 24	24 1/4 x 24 1/4	4	20
DW 400	30 x 30	30 1/4 x 30 1/4	5	29
DW 400	36 x 36	36 1/4 x 36 1/4	7	42

Construction Specifications:

Door: 14 ga. steel

Frame: 16 ga. steel 1" wide perforated flange of 24 ga. galvanized material for mounting purposes

Hinge: Hidden offset hinge on sizes up to and including 24 x 24. Semi-concealed hinge on sizes over 24 x 24

Latches: Flush, stainless steel cam latch

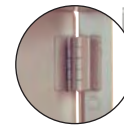
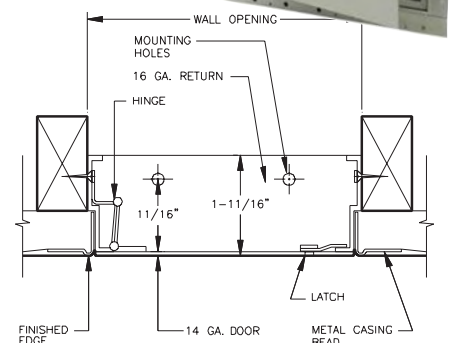
Finish: Grey baked enamel coat

Options:

- + Stainless Steel Type 304 No. 4 and Type 316 No. 4 Satin Finish brushed
- + WB 151 Key Code Cylinder locks-keyed alike with 2 keys per lock
- + Mortise Lock or locks by others
- + Weather resistive neoprene gasketing 3 sides
- + Special sizes available

Fully concealed offset hinges up to 24 x 24

SECTION DETAIL:



WB RDW 410 Series Recessed for Drywall Access Door

Our recessed drywall door gives the option of installing a matching piece of drywall into the door panel thus keeping the continuity of the visual area.

Construction Specifications:

Door: 14 ga. steel 1" recessed depth

Frame: 16 ga. steel 1" wide perforated flange of 24 ga. galvanized material for mounting purposes

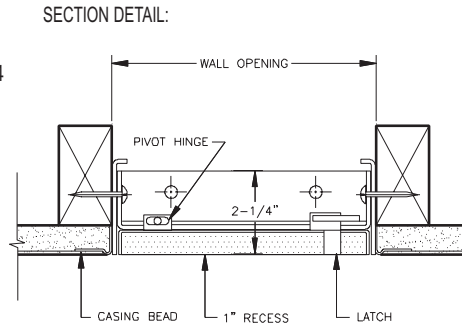
Hinge: Concealed pivot rod

Latches: Flush, stainless steel cam latch

Finish: Grey baked enamel coat

Options:

- + Stainless Steel Type 304 No. 4 and Type 316 No. 4 Satin Finish brushed
- + Key operated medium barrel cylinder lock
- + Weather resistive neoprene gasketing 3 sides
- + Special sizes available



Standard Sizes:

Model No.	Door Size	Wall Opening	Cam Latch	Shipping Wt Lbs.
RDW 410	12 x 12	12 1/4 x 12 1/4	3	8
RDW 410	16 x 16	16 1/4 x 16 1/4	3	12
RDW 410	18 x 18	18 1/4 x 18 1/4	3	14
RDW 410	24 x 24	24 1/4 x 24 1/4	4	21
RDW 410	24 x 36	24 1/4 x 36 1/4	4	21



WB AT 600 Series for Acoustical Tile Access Door

A precision door that provides a virtually concealed installation, keeping acoustical surfaces intact while contributing to sound control and better appearance.

Construction Specifications:

Door: 14 ga. steel, recessed to accommodate up to 1" thick acoustical tile

Frame: 16 ga. steel

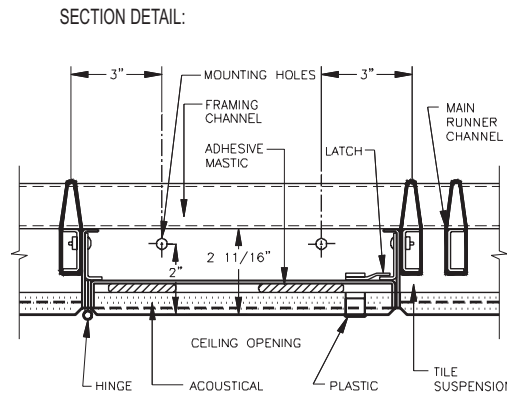
Hinge: Continuous piano hinge opens 180°

Latches: Flush, stainless steel cam latch

Finish: White baked enamel coat

Options:

- + Key operated medium barrel cylinder lock
- + Gasketing 4 sides
- + Special sizes available



Standard Sizes:

Model No.	Door Size	Wall Opening	Cam Latch	Shipping Wt Lbs.
AT 600	12 x 12	12 1/4 x 12 1/4	1	8
AT 600	18 x 18	18 1/4 x 18 1/4	3	15
AT 600	24 x 24	24 1/4 x 24 1/4	3	26



WB ATR 610 Series Ceiling Access Door

To provide access in a suspended drywall ceiling application that forms part of a fire resistive floor-ceiling assembly. The offset design of the return frame along with a recessed panel to receive double layers of 5/8" type X Gypsum board keeps the continuity of the fire resistive quality.

Construction Specifications:

Door: 16 ga. steel recessed 1 1/2"

Frame: 16 ga. steel, hat channel type shape

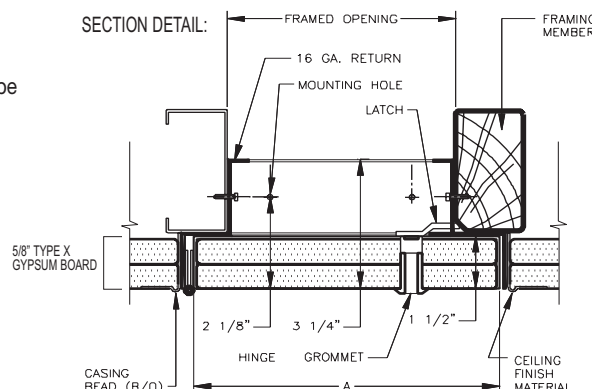
Hinge: Continuous piano hinge opens 180°

Latches: Flush stainless steel cam latch

Finish: White baked enamel coat

Options:

- + Key operated long barrel cylinder lock
- + Hot Smoke seal gasketing 4 sides
- + Special sizes available



Standard Sizes:

Model No.	Door Size	Wall Opening	Cam Latch	Shipping Wt Lbs.
ATR 610	12 x 12	12 3/4 x 12 3/4	1	8
ATR 610	18 x 18	16 3/4 x 16 3/4	1	15
ATR 610	24 x 24	22 3/4 x 22 3/4	3	21



WB PL 500 Series for Plaster Access Door

Designed for all plaster walls and ceilings. The 1/4" safety edge gives the door a strong frame and prevents the plaster from being chipped under normal use.

Construction Specifications:

Door: 14 ga. steel

Frame: 16 ga. steel, 3" wide expanded flange of 24 ga. galvanized material. The space from the expanded flange to the 1/4" safety edge of the door will accommodate 3/4" of plaster

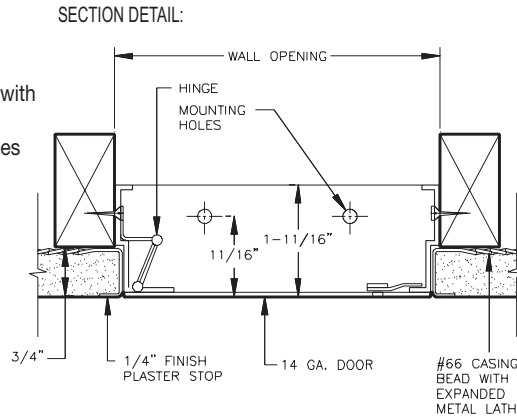
Hinge: Hidden offset hinge on sizes up to and including 24 x 24. Semi-concealed hinge on sizes over 24 x 24

Latches: Flush, stainless steel cam latch

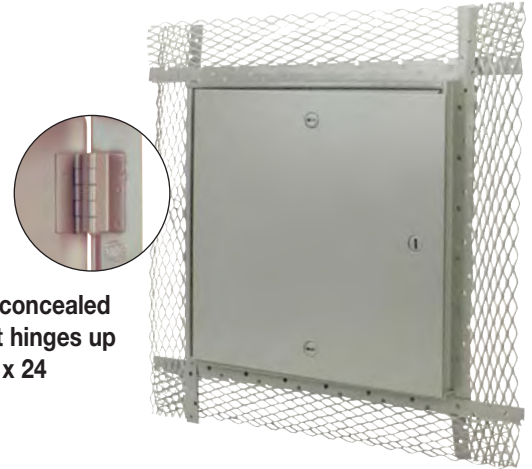
Finish: Grey baked enamel coat

Options:

- + Stainless Steel Type 304 No. 4 and Type 316 No. 4 Satin Finish brushed
- + WB 151 Key Code Cylinder locks-keyed alike with 2 keys per lock
- + Weather resistive neoprene gasketing on 3 sides
- + Special sizes available



Fully concealed offset hinges up to 24 x 24



Standard Sizes:

Model No.	Door Size	Wall Opening	Cam Latch	Shipping Wt Lbs.
PL 500	8 x 8	8 1/4 x 8 1/4	1	5
PL 500	10 x 10	10 1/4 x 10 1/4	1	6
PL 500	12 x 12	12 1/4 x 12 1/4	3	8
PL 500	14 x 14	14 1/4 x 14 1/4	3	10
PL 500	16 x 16	16 1/4 x 16 1/4	3	12
PL 500	18 x 18	18 1/4 x 18 1/4	3	14
PL 500	24 x 24	24 1/4 x 24 1/4	4	22

WB AP 510 Series Recessed for Plaster Access Door

A precision door that provides a virtually concealed installation, keeping acoustical surfaces intact while contributing to sound control and better appearance. Door panels are recessed to receive plaster up to 1" thick. Plaster covering the door finishes flush with the surrounding field, leaving only the narrow frame edges exposed.

Construction Specifications:

Door: 14 ga. steel recessed 1" and lined with expanded metal lath

Frame: 16 ga. steel with 24 ga. galvanized casing bead and expanded metal lath surrounding door

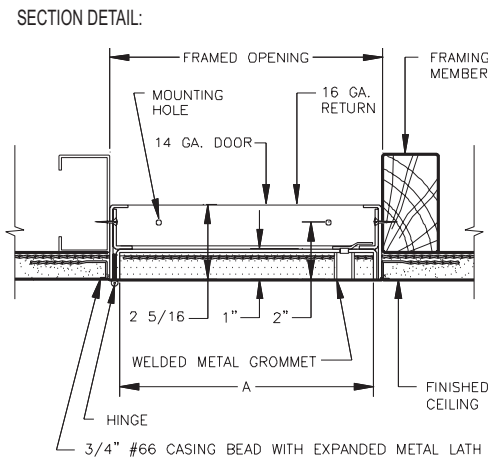
Hinge: Continuous stainless steel hinge opens 180°

Latches: Flush, stainless steel cam latch

Finish: White baked enamel coat

Options:

- + Key-operated medium barrel cylinder lock
- + Weather resistive neoprene gasketing 4 sides
- + Special sizes available



Standard Sizes:

Model No.	Door Size	Wall Opening	Cam Latch	Shipping Wt Lbs.
AP 510	12 x 12	12 1/4 x 12 1/4	3	7
AP 510	18 x 18	18 1/4 x 18 1/4	3	15
AP 510	24 x 24	24 1/4 x 24 1/4	3	28



**The Williams Bros.
Corporation of
America**

WB Fire Rated Access Doors

See pages 11 - 13

FR 800 AND FR 810 ULTRA STANDARD SERIES

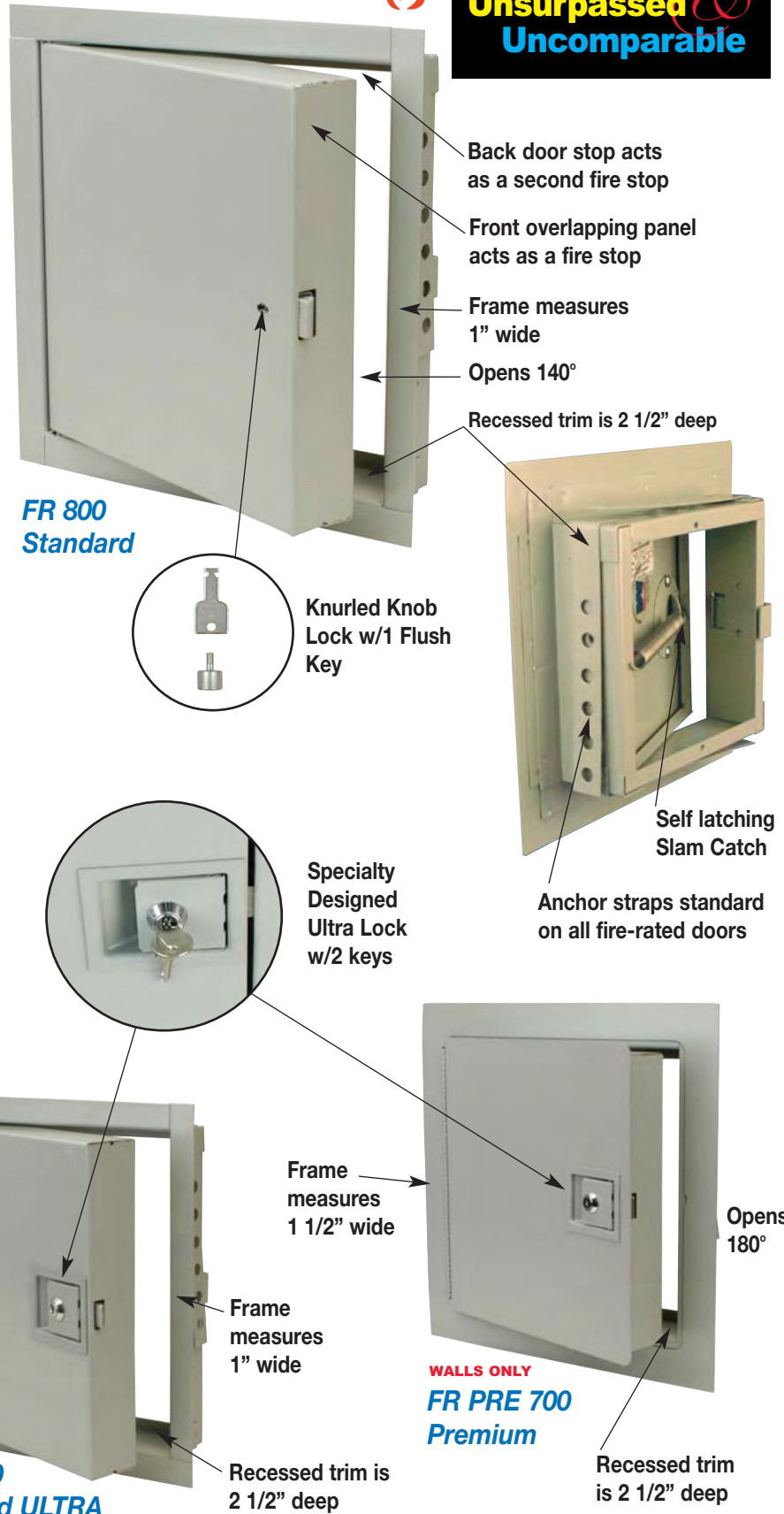
- Standard Knurled Knob and 1 flush key
- Latch is a self-closing assist slam catch with interior release spring closure
- **THERMAFIBER®** Industrial Felt insulation for optimal **fire protection** and **superior sound control**
- The **FR 810 ULTRA STANDARD** offers fully concealed heavy pivot rod hinge
- Has 16 ga. frame and can be used for walls and ceilings (ceilings up to 24" x 36")
- Pivot rod hinge allows door opening of 140°
- The **FR 810 ULTRA STANDARD** has paddle latch with key cylinder lock

FR PRE 700 PREMIUM

- The **FR PREMIUM** is one of the **HEAVIEST** gauge fire rated doors in the industry—14 ga for door and 16 ga for frame
- **PRECISION**-flush access door for vertical walls only
- 1 piece frame is welded to a 2 1/2" deep recessed trim
- The frame is **LASER CUT** from one sheet of cold rolled steel
- The oversized door panel and the inside door stop acts as a **DOUBLE FIRE STOP** safety edge
- 1 piece **SEMI-CONCEALED** piano hinge allows for 180° opening
- Frame has a built in **SAFETY EDGE** for greater access safety
- Optional **HOT SMOKE SEAL** fire rated gasketing can be installed
- Specially designed, flush, **ULTRA LOCK** (to fit 151 keyed cylinders)
- Latch is a self-closing assist slam catch with interior release spring closure
- **THERMAFIBER®** Industrial Felt insulation for optimal **fire protection** and **superior sound control**



**Distinct
Unsurpassed
Uncomparable**



WB FR 800 and FRU 810 Ultra Series Standard Access Door

This fire-rated door can be used wherever it is necessary to provide service access to shafts and any other location which must have a fire rating. The FRU 810 Ultra featuring our specially designed Ultra Lock with 151 key assembly—self-latching keyed cylinder paddle latch. Approved for wall and ceiling use.

Construction Specifications:

Door: 18 ga. steel.

Frame: 16 ga. steel, 2 1/2" frame depth

Insulation: 2" thick mineral wool (THERMAFIBER®) contained within door cavity

Ceiling Installation: To comply with current fire regulation, largest size acceptable is up to and including 24" x 36". See fire rating regulations on page 3

Hinge: Fully concealed, pivot-rod type hinge. Allows opening to 140°

Latches: Knurled knob lock & key, FRU 810 Ultra has specially designed Ultra Lock with 151 key assembly

Automatic Panel Closer: Furnished on all doors. Vertical position only. Ceiling position requires self-assisted closing

Inside Panel Release: Furnished on all doors

Finish: Grey baked enamel coat

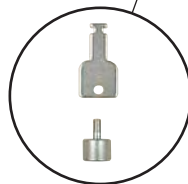
Options:

- + Stainless Steel Type 304 No. 4 and Type 316 No. 4 Satin Finish brushed
- + Mortise Lock or locks by others
- + Hot Smoke Seal gasketing for 4 sides
- + Special sizes available

Standard 800 and 810 Ultra Sizes:

Model No.	Model No.	Door Size	Wall Opening	Slam Catch	Shipping Wt Lbs.
FR 800	—	8 x 8	8 1/4 x 8 1/4	1	8
FR 800	FRU 810	10 x 10	10 1/4 x 10 1/4	1	10
FR 800	FRU 810	12 x 12	12 1/4 x 12 1/4	1	12
FR 800	—	12 x 24	12 1/4 x 24 1/4	1	19
FR 800	FRU 810	14 x 14	14 1/4 x 14 1/4	1	14
FR 800	FRU 810	16 x 16	16 1/4 x 16 1/4	1	17
FR 800	FRU 810	18 x 18	18 1/4 x 18 1/4	1	21
FR 800	—	18 x 24	18 1/4 x 24 1/4	1	26
FR 800	FRU 810	20 x 20	20 1/4 x 20 1/4	1	24
FR 800	FRU 810	22 x 22	22 1/4 x 22 1/4	1	28
FR 800	—	22 x 24	22 1/4 x 24 1/4	1	29
FR 800	FRU 810	22 x 30	22 1/4 x 30 1/4	2	39
FR 800	—	22 x 36	22 1/4 x 36 1/4	2	47
FR 800	FRU 810	24 x 24	24 1/4 x 24 1/4	1	32
FR 800	—	24 x 30	24 1/4 x 30 1/4	2	43
FR 800	FRU 810	24 x 36	24 1/4 x 36 1/4	2	48
FR 800	—	24 x 48	24 1/4 x 48 1/4	2	62
FR 800	FRU 810	30 x 30	30 1/4 x 30 1/4	2	50
FR 800	FRU 810	36 x 36	36 1/4 x 36 1/4	2	67
FR 800	—	36 x 48	36 1/4 x 48 1/4	2	88
FR 800	—	48 x 48	48 1/4 x 48 1/4	2	104

FR 800 Standard



Knurled Knob Lock w/1 Flush Key

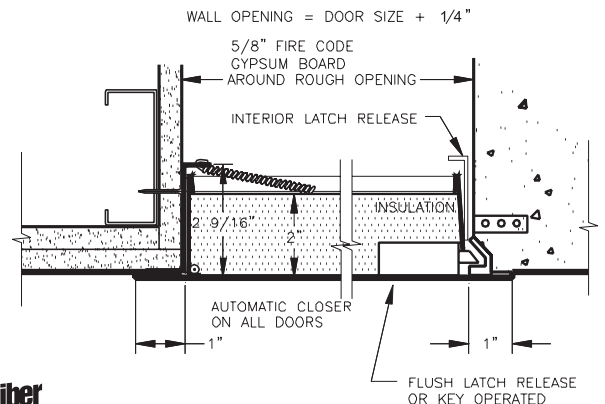


FRU 810 Standard ULTRA



Specialty Designed Ultra Lock w/2 keys

SECTION DETAIL:



WB FR PRE 700 Series Premium Heavy Duty Access Door

This heavy duty fire-rated door is made of 14 ga. steel and has the added benefit of rolled safety edges for operator protection. This door can be used in any wall location which must have a fire rating.

Construction Specifications:

Door: 14 ga. steel. Inside of door has rolled safety edges for operator protection

Frame: 16 ga. steel, 2 1/2" deep

Insulation: 2" thick mineral wool (THERMAFIBER®), in between two pieces of 22 ga. steel.

See fire rating regulations on page 3

Hinges: Continuous piano hinge allows opening to 180°

Latches: Specially designed Ultra Lock—self-latching keyed cylinder paddle latch (WB 151 key code)

Automatic Panel Closer: Furnished on all doors. Vertical position only.

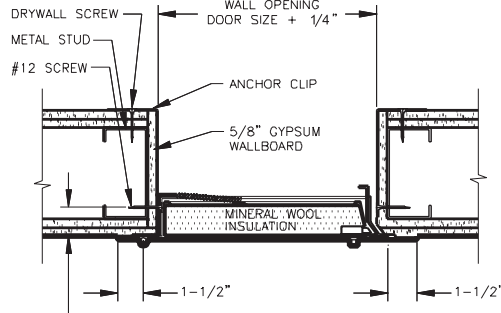
Inside Panel Release: Furnished on all doors.

Finish: Grey baked enamel coat

Standard Sizes:

Model No.	Door Size	Wall Opening	Slam Catch	Shipping Wt Lbs.
FR PRE 700	12 x 12	12 1/4 x 12 1/4	1	17
FR PRE 700	24 x 24	24 1/4 x 24 1/4	1	41

SECTION DETAIL: gypsum wall

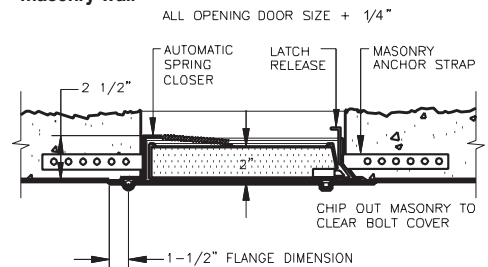


Options:

- + Stainless Steel Type 304 No. 4 and Type 316 No. 4 Satin Finish brushed
- + Mortise Lock or locks by others
- + Hot Smoke Seal gasketing for 4 sides
- + Zinc Dipped
- + Special sizes available



SECTION DETAIL: masonry wall



WB FRB 900 Series Basic Uninsulated Access Door

The FR Basic Uninsulated access door can only be used in an area where no temperature rise is required.

Standard Sizes:

Model No.	Door Size	Wall Opening	Slam Catch	Shipping Wt Lbs.
FRB 900	8 x 8	8 3/8 x 8 3/8	1	8
FRB 900	10 x 10	10 3/8 x 10 3/8	1	10
FRB 900	12 x 12	12 3/8 x 12 3/8	1	12
FRB 900	14 x 14	14 3/8 x 14 3/8	1	14
FRB 900	16 x 16	16 3/8 x 16 3/8	1	17
FRB 900	18 x 18	18 3/8 x 18 3/8	1	21
FRB 900	20 x 20	20 3/8 x 20 3/8	1	24
FRB 900	22 x 22	22 3/8 x 22 3/8	1	28
FRB 900	24 x 24	24 3/8 x 24 3/8	1	32
FRB 900	24 x 30	24 3/8 x 30 3/8	2	43
FRB 900	30 x 30	30 3/8 x 30 3/8	2	50

Construction Specifications:

Door: 14 ga. steel

Frame: 16 ga. steel

Finish: Grey baked enamel coat

Hinge: Continuous piano hinge allows opening to 180°

Latches: Self-latching direct action latch accepts both key and knurled knob

Automatic Panel Closer: Furnished on all doors. Vertical position only

Inside Panel Release: Furnished on all doors

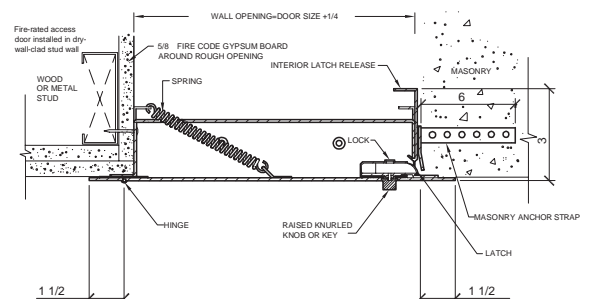
See fire rating regulations on page 3

Options:

- + Mortise Lock or locks by others
- + Hot Smoke Seal gasketing for 4 sides
- + Special sizes available



SECTION DETAIL:



WB FR DW 820 Series Standard for Drywall

The WB-FR Standard Access Door with a tape in flange allows for a trimless appearance to eliminate visual distraction.

Construction Specifications:

Door: 18 ga. steel

Frame: 16 ga. steel, 2 1/2" deep, with 1" wide perforated flange of 24 ga. galvanized material for mounting purposes

Insulation: 2" thick mineral wool (THERMAFIBER®), contained within door cavity

Hinge: Fully concealed, pivot-rod type hinge allows opening to 140°

Latches: Self-latching direct action latch, accepts both key and knurled knob

Automatic Panel Closer: Furnished on all doors. Vertical position only. Ceiling position requires self-assisted closing

Inside Panel Release: Furnished on all doors

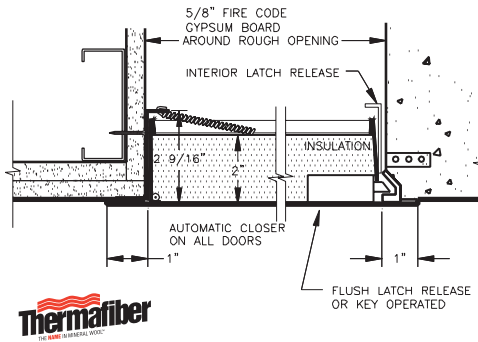
Ceiling Installation: To comply with current fire regulations, largest size acceptable is up to and including 24" x 36". See fire rating regulations on page 3

Finish: Grey baked enamel coat

Options:

- + Stainless Steel Type 304 No. 4 and Type 316 No. 4 Satin Finish brushed
- + Ultra Lock
- + Mortise Lock or locks by others
- + Hot Smoke Seal gasketing for 4 sides
- + Special sizes available

SECTION DETAIL:



Standard Sizes:

Model No.	Door Size	Wall Opening	Slam Catch	Shipping Wt Lbs.
FR DW 820	12 x 12	121/4 x 121/4	1	12
FR DW 820	14 x 14	141/4 x 141/4	1	14
FR DW 820	16 x 16	161/4 x 161/4	1	17
FR DW 820	18 x 18	181/4 x 181/4	1	19
FR DW 820	24 x 24	241/4 x 241/4	1	30

WB FR PL 830 Series Standard for Plaster

The WB-FR Standard Fire Rated Access Door with a plaster bead trim for use in plaster walls and ceilings. Accommodates 3/4" of plaster.

Construction Specifications:

Door: 18 ga. steel

Frame: 16 ga. steel, 2 1/2" deep, with 3" wide perforated flange of 24 ga. galvanized material. Space from expanded flange to the 1/4" safety edge of the door will accommodate 3/4" of plaster

Insulation: 2" thick mineral wool (THERMAFIBER®)

Hinge: Fully concealed, pivot-rod type hinge allows opening to 140°

Latches: Self-latching direct action latch will accept both key and knurled knob

Automatic Panel Closer: Vertical position only. Ceiling position requires self-assisted closing

Inside Panel Release: Furnished on all doors

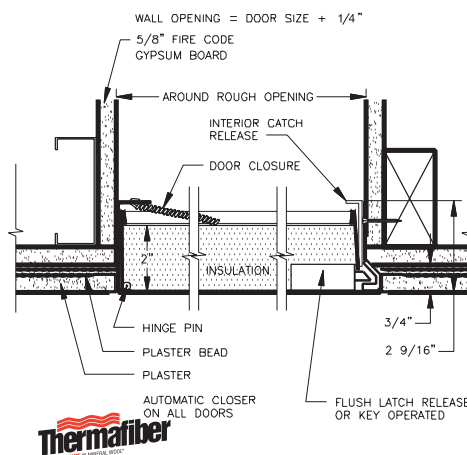
Ceiling Installation: To comply with current fire regulations, largest size acceptable is up to and including 24" x 36". See fire rating regulations on page 3

Finish: Grey baked enamel coat and can be used as a finish or as a prime coat

Options:

- + Stainless Steel Type 304 No. 4 and Type 316 No. 4 Satin Finish brushed
- + Mortise Lock or locks by others
- + Ultra Lock
- + Hot Smoke Seal gasketing for 4 sides
- + Special sizes available

SECTION DETAIL:



Standard Sizes:

Model No.	Door Size	Wall Opening	Slam Catch	Shipping Wt Lbs.
FR PL 830	12 x 12	121/4 x 121/4	1	12
FR PL 830	14 x 14	141/4 x 141/4	1	15
FR PL 830	16 x 16	161/4 x 161/4	1	18
FR PL 830	18 x 18	181/4 x 181/4	1	21
FR PL 830	24 x 24	241/4 x 241/4	1	32

WB GY 3000 Series Lightweight Gypsum Ceiling Access Panel

A state-of-the-art lightweight gypsum based formula that exceeds all required specifications that the market expects. Manufactured from inorganic material and with 70% post-consumer recycled glass, using a patented composition that consistently provides a superior product. Our gypsum panel is lightweight, and features exceptional definition, high compressive strength, and zero mold and fungus growth. Moisture resistant, no warping, cracking or sagging.

Construction Specifications:

Door & Frame: 5/8" lightweight Gypsum, drop in door

Ceiling Installation: Access panels are installed using standard supplies, screws are #6 bugle head. Joints are filled with standard tape and joint compound, then sanded. The access panel has edge thickness to accommodate 5/8" drywall. Therefore, shimming may be required if adjacent material is not 5/8".

Substrate material is determined by job site conditions. The panel does not require framing, but can be connected to adjacent drywall using blocks or studs.

Finish: Unpainted natural grey Gypsum

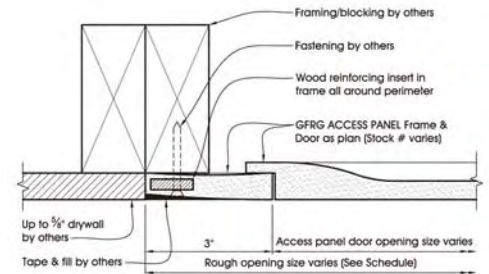


Standard Sizes:

Model No.	Door Size	Rough Opening	Shipping Wt Lbs.
GY 3000	12 x 12	18 x 18	5
GY 3000	18 x 18	24 x 24	10
GY 3000	24 x 24	30 x 30	15



SECTION DETAIL:



WB GY 3100 Series Lightweight Gypsum Hinged Ceiling Access Panel

A state-of-the-art lightweight gypsum based formula that exceeds all required specifications that the market expects. Manufactured from inorganic material and with 70% post-consumer recycled glass, using a patented composition that consistently provides a superior product. Our gypsum panel with hinges is lightweight, and features exceptional definition, high compressive strength, and zero mold and fungus growth. Moisture resistant, no warping, cracking or sagging.

Construction Specifications:

Door & Frame: 5/8" lightweight Gypsum, drop in door

Hinge: Concealed hinge

Lock: Flush cam latch or lockable latch

Ceiling Installation: Access panels are installed using standard supplies, screws are #6 bugle head. Joints are filled with standard tape and joint compound, then sanded. The access panel has edge thickness to accommodate 5/8" drywall. Therefore,

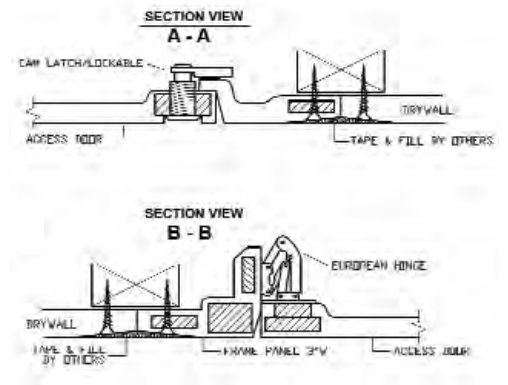
shimming may be required if adjacent material is not 5/8".

Substrate material is determined by job site conditions. The panel does not require framing, but can be connected to adjacent drywall using blocks or studs.

Finish: Unpainted natural grey Gypsum

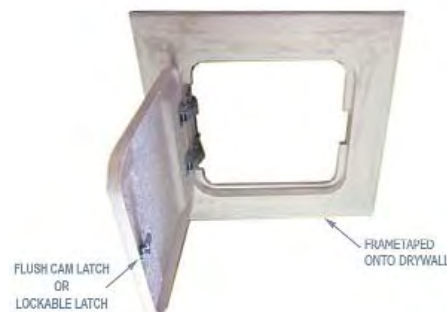


SECTION DETAIL:



Standard Sizes:

Model No.	Door Size	Rough Opening	Shipping Wt Lbs.
GY 3100	9 x 9	- *	
GY 3100	12 x 12	- *	
GY 3100	16 x 16	- *	
GY 3100	18 x 18	- *	
GY 3100	24 x 24	- *	



WB MD SEC 1000 Series Medium Security Access Door

This door assures medium security whenever it is necessary under institutional conditions. Most detention buildings and mental care facilities require access to vital services in or behind walls, shafts and stairwells.

Construction Specifications:

Door: 12 ga. steel

Frame: 16 ga. steel

Hinge: Semi-concealed piano hinge

Anchors: Heavy steel, welded to frame

Lock: Counter sunk tamperproof screws

Finish: Grey baked enamel coat

Options:

- + Stainless Steel Type 304 No. 4 and Type 316 No. 4 Satin Finish brushed
- + Mortise Lock
- + Weather resistive neoprene gasketing 4 sides
- + Special sizes available

Standard Sizes:

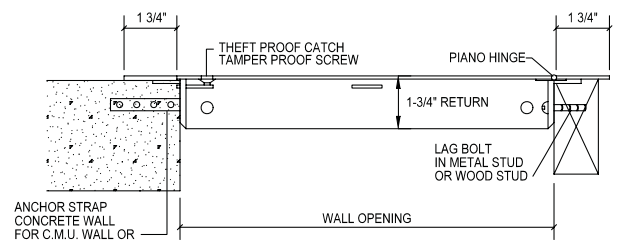
Model No.	Door Size	Wall Opening	Lock	Shipping Wt Lbs.
MD SEC 1000	12 x 12	12 1/4 x 12 1/4	3	22
MD SEC 1000	16 x 16	16 1/4 x 16 1/4	3	31
MD SEC 1000	18 x 18	18 1/4 x 18 1/4	3	36
MD SEC 1000	24 x 24	24 1/4 x 24 1/4	4	52
MD SEC 1000	24 x 36	24 3/4 x 36 3/4	4	73
MD SEC 1000	36 x 36	36 3/4 x 36 3/4	5	103
WB-24	Snake eye screwdriver			



A special snake eye screwdriver is required to open this door



SECTION DETAIL:



WB HG SEC 1100 Series High Security Access Door

The WB High Security Access Door is designed to be placed where maximum security is of great importance. This door comes prepped for a detention lock which is sold separately.

Construction Specifications:

Door: 10 ga. steel

Frame: 2" x 2" x 3 1/16" angle

Hinges: Heavy duty type butt hinges welded to surround and door

Anchors: Heavy steel, welded to frame

Lock: Prepped for detention lock

Finish: Grey baked enamel coat

Options:

- + Stainless Steel Type 304 No. 4 and Type 316 No. 4 Satin Finish brushed
- + Detention lock and Paracentric key
- + Special sizes available

Standard Sizes:

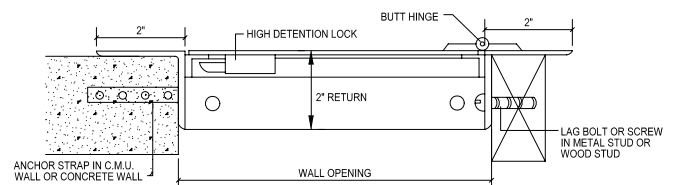
Model No	Door Size	Wall Opening	Heavy Duty Hinges	Shipping Wt. Lbs.
HG SEC 1100	12 x 12	12 3/4 x 12 3/4	2	46
HG SEC 1100	16 x 16	16 3/4 x 16 3/4	2	56
HG SEC 1100	18 x 18	18 3/4 x 18 3/4	2	62
HG SEC 1100	24 x 24	24 3/4 x 24 3/4	2	82
WB-15	Paracentric Lock			
WB-16	Key			



Prepped for paracentric lock and key



SECTION DETAIL:



WB TB 1200 Series Drop-In Ceiling Access Door

This unique access door comes in a white baked enamel finish and features a hassle-free installation. It simply drops into the T-Bar ceiling with ease. Includes mounting screws for safe and secure installation.

Patent Pending

Construction Specifications:

Door & Frame: 16 ga. steel

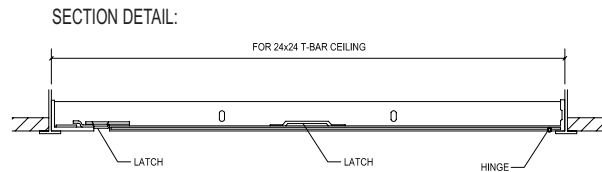
Hinge: Continuous piano hinge

Latches: Flush, stainless steel cam latch

Finish: White baked enamel coat

Options:

- + WB 151 Key Code Cylinder locks-keyed alike with 2 keys per lock



Standard Sizes:

Model No.	Door Size	Wall Opening	Hinges	Cam Latch	Shipping Wt Lbs.
TB 1200	24 x 24	23 3/4 x 23 3/4	1	4	14
TB 1200	24 x 48	23 3/4 x 47 3/4	1	5	30

WB MAP Plastic Reversible Access Door

These high impact ABS plastic reversible panels with UV stabilizers are made with precision dies for perfect fit of door and frame. Surface is a cosmetically acceptable textured surface.

Construction Specifications:

Door & Frame: High impact ABS plastic with UV stabilizers. Door is locked to return frame with snap friction catch. All doors have removable panels

Finish: White textured finish

Installation: Adhesive caulking recommended

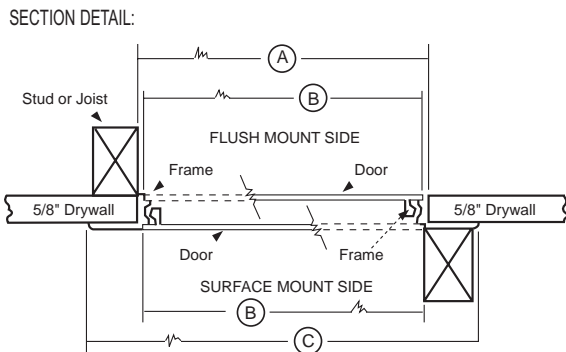
Knockouts: For plumbing and electrical applications the door has designated drill points and knockouts for easy wiring installation

Tile Applications: Door is tile-able, use flexible adhesive and grout. Adjust frame height to finished wall



Standard Sizes:

Model No	Door Size	Wall Opening	Actual Door Size	Frame Size to Outer Flange
MAP	4 x 6	4 3/8 x 6 3/8	4 x 6	5 1/4 x 7 1/4
MAP	6 x 9	6 3/8 x 9 3/8	6 x 9	8 1/4 x 11 1/4
MAP	8 x 8	8 3/8 x 8 3/8	8 x 8	10 1/4 x 10 1/4
MAP	14 x 14	14 3/8 x 14 3/8	13 3/4 x 13 3/4	17 x 17
MAP	14 x 29	14 3/8 x 29 3/8	13 3/4 x 29	17 x 32 1/4



WB EXT 1300 Series Exterior Access Door

The one of a kind exterior access door is zinc dipped, insulated and includes two types of gasketing. Weather resistive open celled microcellular polyurethane gasketing and closed cell neoprene sponge SC42 W/PSA stripping gasketing on inside for outdoor applications.

Construction Specifications:

Door: 16 ga. steel, trim 1-1/2" wide

Frame: 16 ga. steel, 2-3/8" depth

Insulation: Double layer of 1" GreenGuard® Extruded Polystyrene insulation board, with R-Value @ 75°F Mean 5.0 x 2, FM approved

Gasketing: Open celled microcellular polyurethane on inside of door. Closed cell neoprene sponge SC42 W/PSA stripping gasketing on the back of the door

Hinge: Continuous piano hinge allows opening to 180°

Latches: Chrome plated "T" type handle with pivot rod 3 point catch. WB 151 key code cylinder lock. The

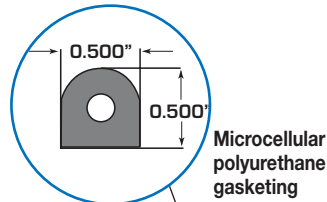
12 x 12, 14 x 14 and 16 x 16 have a single point catch. **Opens from the outside only**

Finish: Zinc dipped baked grey enamel

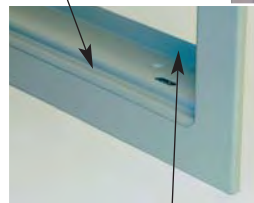
Application: For exterior purposes, weather resistive

Standard Sizes:

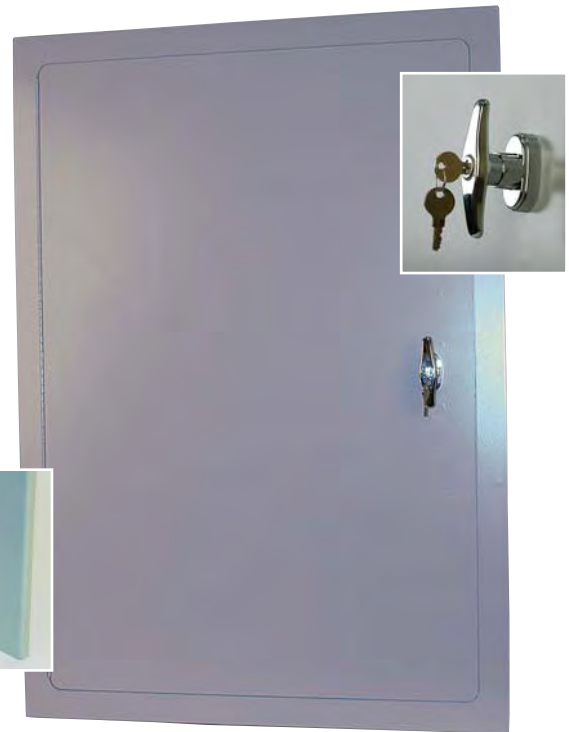
Model No.	Door Size	Wall Opening	Shipping Wt Lbs.
EXT 1300	12 x 12	12 1/4 x 12 1/4	27
EXT 1300	14 x 14	14 1/4 x 14 1/4	30
EXT 1300	16 x 16	16 1/4 x 16 1/4	35
EXT 1300	18 x 18	18 1/4 x 18 1/4	40
EXT 1300	22 x 30	22 1/4 x 30 1/4	45
EXT 1300	22 x 36	22 1/4 x 36 1/4	50
EXT 1300	24 x 24	24 1/4 x 24 1/4	55
EXT 1300	24 x 36	24 1/4 x 36 1/4	67
EXT 1300	30 x 36	30 1/4 x 36 1/4	79
EXT 1300	36 x 36	36 1/4 x 36 1/4	90



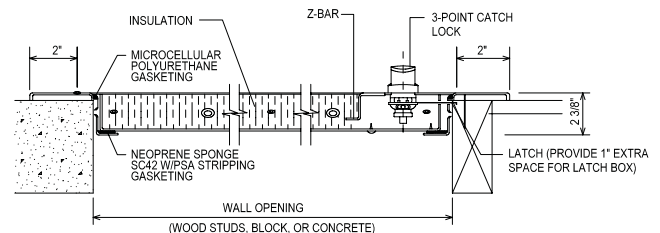
Microcellular polyurethane gasketing



Neoprene sponge SC42 W/PSA stripping gasketing applied on back inside edge



SECTION DETAIL:



WB ADC/ADH 1400 Series True Fit Duct Access Door

ADC-D Double Cam Standard Sizes:

Model No.	Door Size	Frame Neck O.D.	Cams ADC-D	Shipping Wt Lbs.
ADC 1400	6 x 6	4 7/8 x 4 7/8	2	1
ADC 1400	8 x 8	6 7/8 x 6 7/8	2	2
ADC 1400	10 x 10	8 7/8 x 8 7/8	2	3
ADC 1400	12 x 12	10 7/8 x 10 7/8	2	4
ADC 1400	14 x 14	12 7/8 x 12 7/8	2	5
ADC 1400	16 x 16	14 7/8 x 14 7/8	4	6
ADC 1400	18 x 18	16 7/8 x 16 7/8	4	7
ADC 1400	24 x 24	22 7/8 x 22 7/8	4	2

ADH-D Hinged Standard Sizes:

Model No.	Door Size	Frame Neck O.D.	Shipping Wt Lbs.
ADH 1400	6 x 6	4 7/8 x 4 7/8	1
ADH 1400	8 x 8	6 7/8 x 6 7/8	2
ADH 1400	10 x 10	8 7/8 x 8 7/8	3
ADH 1400	12 x 12	10 7/8 x 10 7/8	4
ADH 1400	14 x 14	12 7/8 x 12 7/8	5
ADH 1400	16 x 16	14 7/8 x 14 7/8	6
ADH 1400	18 x 18	16 7/8 x 16 7/8	7
ADH 1400	24 x 24	22 7/8 x 22 7/8	12

This convenient, economical access door is easy to install with notched edges, to provide for a quick and simple installation. Doors are available in either hinged or double cam construction (item is union labeled)

Construction Specifications:

Frame: Die formed 22 ga. flanged frame. Die formed 24 ga. door

Door: 22 ga. steel. Double wall construction

Hinge: ADH-D: Continuous hinge. ADC-D: No hinge

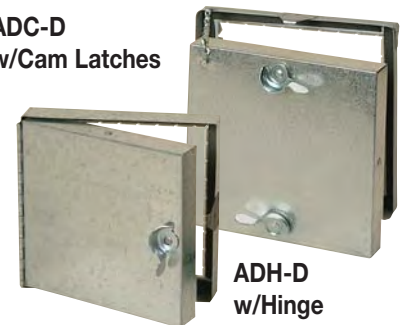
Latch: Cam latches

Finish: Mill finish.

Gasketing: Polyester open celled foam

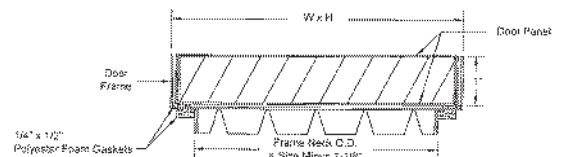
Insulation: 1" fiberglass insulation

ADC-D w/Cam Latches



ADH-D w/Hinge

SECTION DETAIL:



WB AL 1500 Series Aluminum Access Door

Our Premium lightweight, all aluminum, insulated access door is ideal for exterior applications. The aluminum door panel is insulated with 1" TUFF-R™ polyisocyanurate. Aesthetically pleasing appearance with a satin finish look.

Construction Specifications:

Material: Non-Extruded Aluminum .063 door and surround trim

Door: Flush to edge of frame

Frame: 1 5/16" mitered aluminum extrusion flange with 1-1/2" deep mounting frame

Hinge: Concealed continuous piano type

Insulation: 1" TUFF-RTM polyisocyanurate insulation, with 6.5 R-Value at 75° F mean temperature

Gasketing: 1/8" X 3/8" closed cell neoprene gasketing (included)

Latch: Flush aluminum cam latch

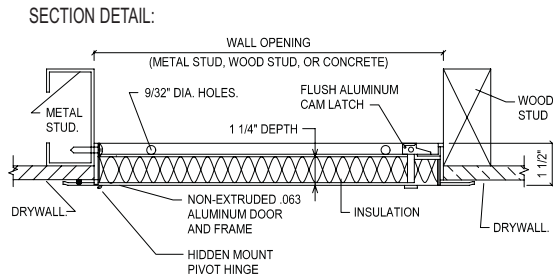
Options:

+ WB 151 Key Code Cylinder locks-keyed alike with 2 keys per lock



Standard Sizes:

Model No.	Door Size	Wall Opening	Cam Latch	Shipping Wt Lbs.
AL 1500	12 x 12	12 1/2 x 12 1/2	4	5
AL 1500	18 x 18	18 1/2 x 18 1/2	4	7
AL 1500	24 x 24	24 1/2 x 24 1/2	4	9



WB AL 4000 Series Aluminum Access Door

This lightweight, all aluminum, insulated access door is ideal for exterior applications. Mitered aluminum frame provides an architecturally pleasing appearance. Aluminum door panel is lined with 3/4" polystyrene insulation.

Standard Sizes:

Model No.	Door Size	Wall Opening	Cam Latch	Shipping Wt Lbs.
AL 4000	8 x 8	8 1/2 x 8 1/2	1	2
AL 4000	10 x 10	10 1/2 x 10 1/2	1	3
AL 4000	12 x 12	12 1/2 x 12 1/2	1	4
AL 4000	14 x 14	14 1/2 x 14 1/2	1	5
AL 4000	16 x 16	16 1/2 x 16 1/2	1	6
AL 4000	18 x 18	18 1/2 x 18 1/2	1	7
AL 4000	24 x 24	24 1/2 x 24 1/2	1	9
AL 4000	24 x 36	24 1/2 x 36 1/2	1	12
AL 4000	24 x 48	24 1/2 x 48 1/2	2	16
AL 4000	30 x 30	30 1/2 x 30 1/2	2	12
AL 4000	36 x 36	36 1/2 x 36 1/2	2	16
AL 4000	36 x 48	36 1/2 x 48 1/2	2	21
AL 4000	48 x 48	48 1/2 x 48 1/2	2	27
AL 4000	60 x 48	60 1/2 x 48 1/2	2	34
AL 4000	72 x 48	72 1/2 x 48 1/2	2	40

Construction Specifications:

Material: Extruded Aluminum .045 door and surround trim

Door: Flush to edge of frame

Frame: 1 5/16" mitered aluminum extrusion flange with 1-1/2" deep mounting frame

Hinge: Doors with width 24" or less to have concealed pin hinge. Doors with width over 24" to have continuous aluminum piano hinge with exposed knuckle, set to open to 180°

Insulation: 3/4" polystyrene insulation, with 3.8 R-value at 75° F mean temperature

Gasketing: 1/8" x 3/8" closed cell neoprene gasketing (included)

Latch: cylinder lock & key

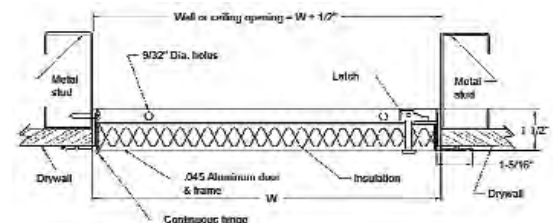
Finish: Mill finish

Options:

+ Long Lock from Winlock



SECTION DETAIL:



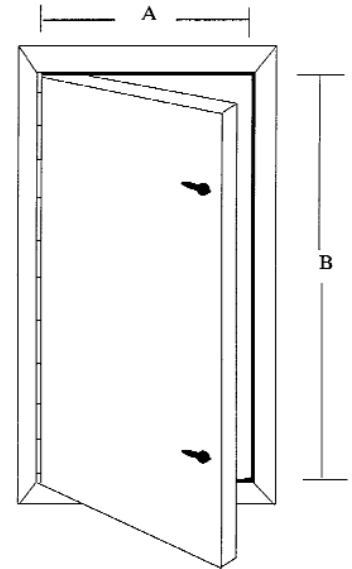
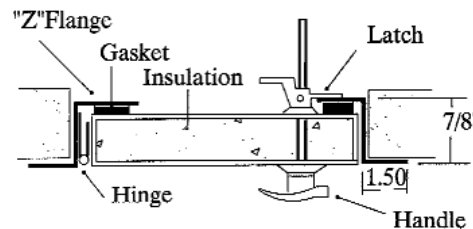
WB WIN 1700 Series Insulated Walk-In Duct Door

Model No.	Door Size	Slam Catch	Shipping Wt Lbs.
WIN 1700	18 x 36	-	-
WIN 1700	18 x 48	-	-
WIN 1700	24 x 36	-	-
WIN 1700	24 x 48	-	-
WIN 1700	24 x 54	-	-
WIN 1700	24 x 60	-	-
WIN 1700	24 x 66	-	-
WIN 1700	24 x 72	-	-
WIN 1700	30 x 36	-	-
WIN 1700	30 x 48	-	-
WIN 1700	30 x 54	-	-
WIN 1700	30 x 60	-	-
WIN 1700	30 x 66	-	-
WIN 1700	30 x 72	-	-

Construction Specifications:

- Door:** 20 ga. galvanized steel, double wall
- Frame:** 16 ga. galvanized steel
- Insulation:** 1" thick 3lb. density insulation
- Gasketing:** 1/2" wide neoprene closed cell door to frame gasketing
- Latch:** 2 exterior latches with interior handles
- Options:**
 - + Stainless Steel Type 316 No. 4 Satin Finish brushed
 - + 12" x 12" View Port
 - + Extra latches

SECTION DETAIL:



WB ADWT Airtight/Watertight Access Door

The WB ADWT is a flush access door that has been tested for air infiltration and water penetration. The Door and frame are fully welded and gasketed. This access door is ideal for use in laboratories, clean rooms, operating rooms, etc. where an airtight/watertight seal is required. Standard in type 304 stainless steel with a #4 satin polish. Prime coated Steel is also available.

Construction Specifications:

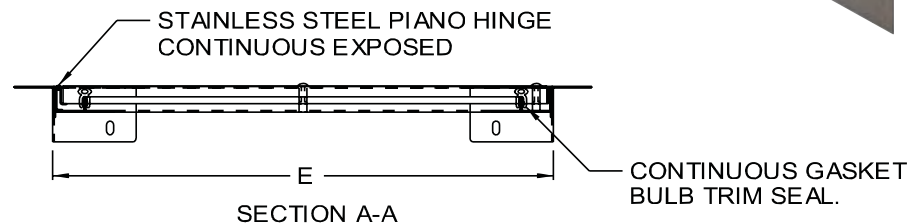
- Material:** Stainless Steel or Steel – 16 gauge door; 16 gauge mounting frame
- Door/Frame:** Flush to frame with reinforced edges
- Hinge:** Continuous exposed stainless steel piano hinge
- Air infiltration:** less than 0.01 cfm/sq foot-ASTM E 283

Standard Sizes:

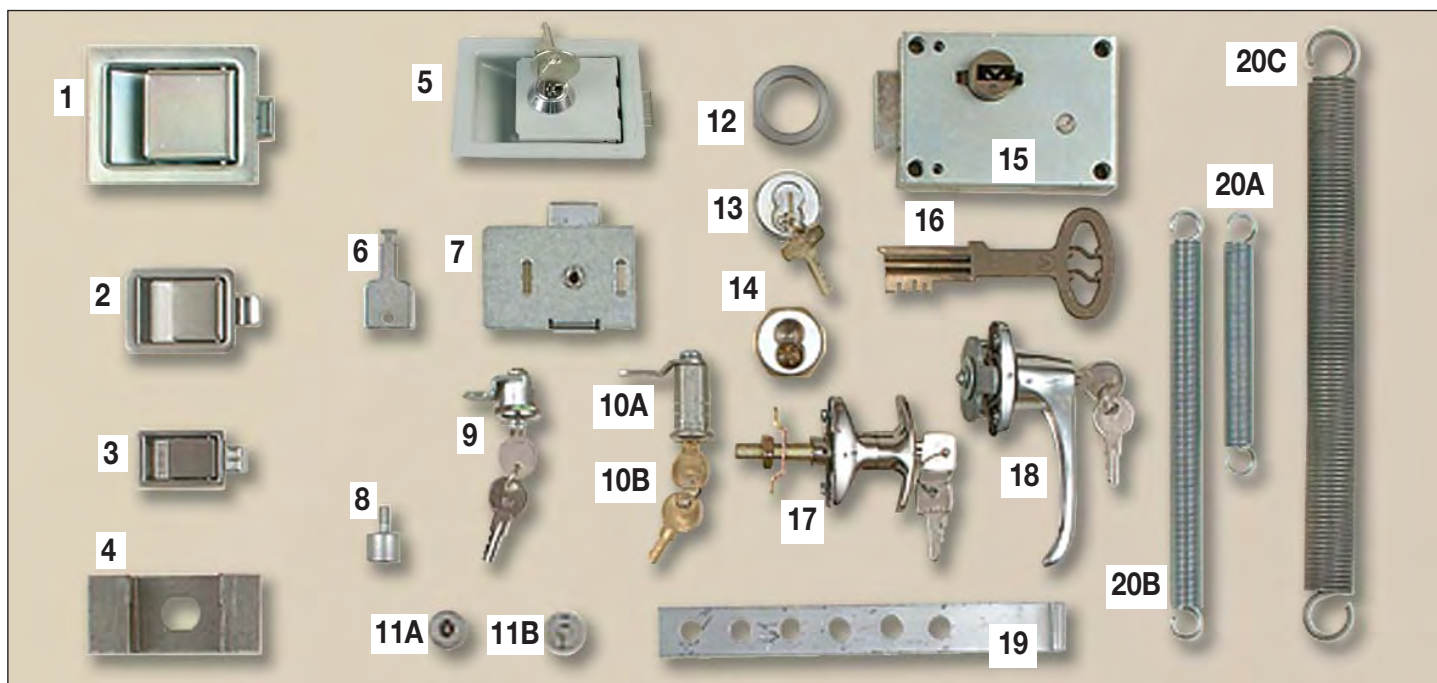
Model No.	Door Size	Wall Opening	Slam Catch	Shipping Wt Lbs.
ADWT	12x12	12-3/8x12-3/8	-	-
ADWT	18x18	18-3/8x18-3/8	-	-
ADWT	24x24	24-3/8x24-3/8	-	-
ADWT	30x30	30-3/8x30-3/8	-	-
ADWT	30x48	30-3/8x48-3/8	-	-

- Water Penetration:** no leakage at 15.05 psf-ASTM E
- Gasketing:** Continuous Bulb trim Gasket
- Latch:** Stainless Steel phillips head screws standard.
- Finish:** Stainless Steel: #4 satin polish. Steel: 5 stage iron phosphate with prim coat of white alkyd baking enamel

SECTION DETAIL:

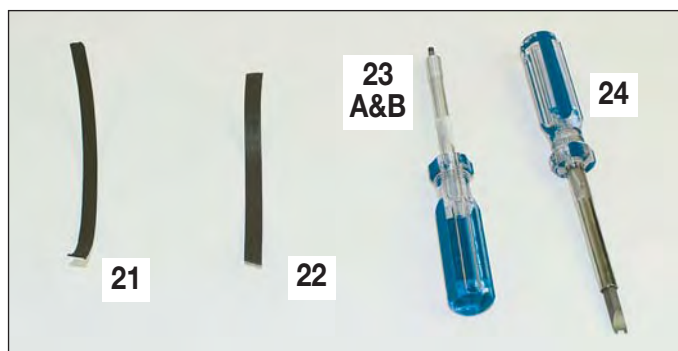


Available Optional Accessories



- | | | |
|----------------------------------------------------------|-----------------------------------------------------------------------|-------------------------------------------------------|
| 1 Large paddle latch | 10A Medium barrel cylinder lock - RDW, AT, AP | 15 Heavy duty detention lock |
| 2 Medium paddle latch | 10B Long barrel cylinder - ATR | 16 Paracentric key |
| 3 Small paddle latch | 11A Tamper proof torx screws | 17 T type cabinet handle |
| 4 Adaptor bracket for medium barrel cylinder lock | 11B Tamper proof snake-eye screws | 18 L type cabinet handle |
| 5 Ultra Lock | 12 Mortise ring adaptor complete with set screw for GP, DW, PL | 19 Optional masonry anchor straps (set of 4) |
| 6 Key for FR Standard door | 13 E series mortise body with changeable construction core | Assorted sizes of springs for fire rated access doors |
| 7 Slam catch | 14 Slab cabinet mortise cylinder (no core) | 20 A Small FR return spring |
| 8 Knurled knob for FR Standard door | 12 & 14 Prepped with lock (no core) | 20 B Medium FR return spring |
| 9 Standard cylinder lock (151 Keycode) | 12 & 13 Prepped with lock and core | 20 C Large FR return spring |

Miscellaneous Accessories



Gasketing

- 21** Hot Smoke Seal Gasketing
- 22** Weather 3/16" Gasketing

Screwdrivers

- 23 A** Torx Medium T-25
- 23 B** Torx Regular T-27
- 24** Snake-eye screwdriver

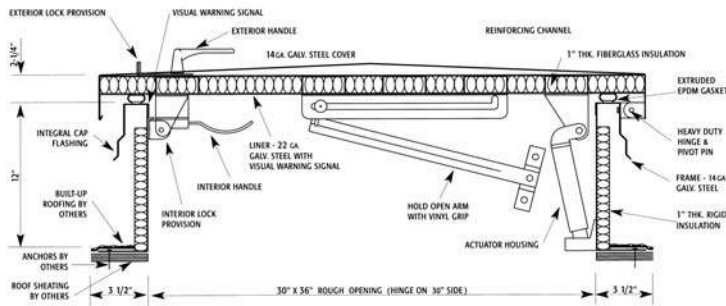
WB Roof Hatch

This newly re-designed WB Roof Hatch offers improved features such as a heavier duty lock and handle assembly, heavy gauge, weather-resistant gasketing and fully concealed hinge hardware located on the interior making rust unlikely. Pre-lubricated compression springs, encased in zinc-plated telescopic tubes held in place by 3-sided welded brackets. Durable and re-coatable gray primer finish comes standard. Add this high quality WB Roof Hatch to your product line today!

Construction Specifications:

- 14 gauge galvanized steel
- Durable re-coatable gray primer finish
- Highly visible safety caution striping
- Heavy duty lock and handle
- Weather resistant gasketing
- Available in many sizes
- Finest quality and workmanship
- 18 x 18 available as sample (at extra cost)

SECTION DETAIL:



Standard Sizes:

Item #	Size in Inches W x H	Shipping Wt. Lbs.
WB RH 36 x 30 Steel	36 x 30	151
WB RH 30 x 54 Steel	30 x 54	198
WB RH 36 x 36 Steel	36 x 36	167
WB RH 30 x 36 Aluminum	30 x 36	-
WB RH 48 x 48 Aluminum	48 x 48	275

WB GRS Guard Railing System

Construction Specifications:

Finish Galvanized (hot dipped).

Chain system 3/16" proof coil ASTM specification, zinc plated with quick link and "S" hook

Self closing gate (optional to chain)
Manufacturer's standard spring or gravity operated

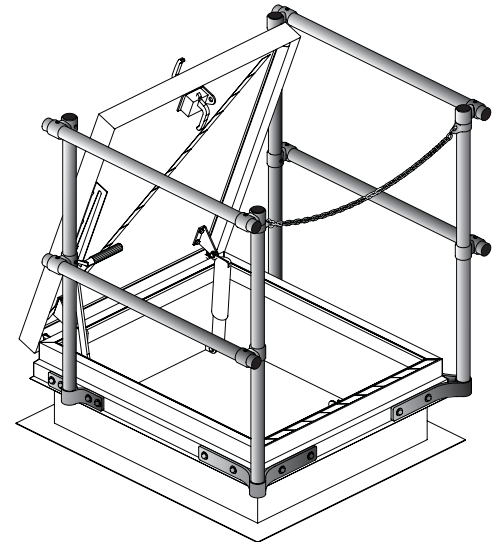
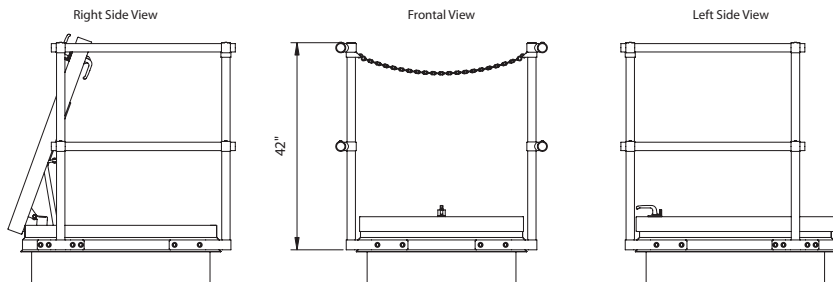
Pipe plug Weather and light resistant for pipe ends

Bolts Hex head bolts 3/8", grade Z, zinc plated with manufacturer's standard washers inside and outside

Railing fittings Manufacturer's standard cast fittings, galvanized

Sealant for brackets Manufacturer's standard

SECTION DETAIL:



Standard Sizes:

Item #	Shipping Wt. Lbs.
WB-RHSR-SS	36 X 30 87
WB-RHSR-AL	36 X 30 35
WB-RHSR-FB	30 X 54 -
WB-RHSR-FB	48 X 96 (30 X 96) -
WB-RHSR-O	36 X 36 -
WB-RHSR-O	48 X 48 -

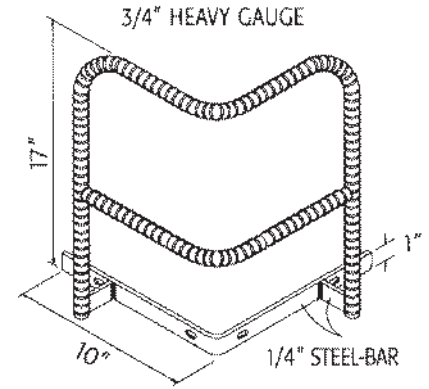
WB SG Safety Grab

WB Safety Grab: 3/4" heavy gauge steel that attaches to the roof hatch

- For added and improved safety whether entering or leaving the roof
- Overall height 17", horizontal width 10" to corner
- Textured for increased grip
- Easily mounted on either corner of exterior hatch opening
- Polyester dry powder coated to match roof access hatch

Standard Sizes:

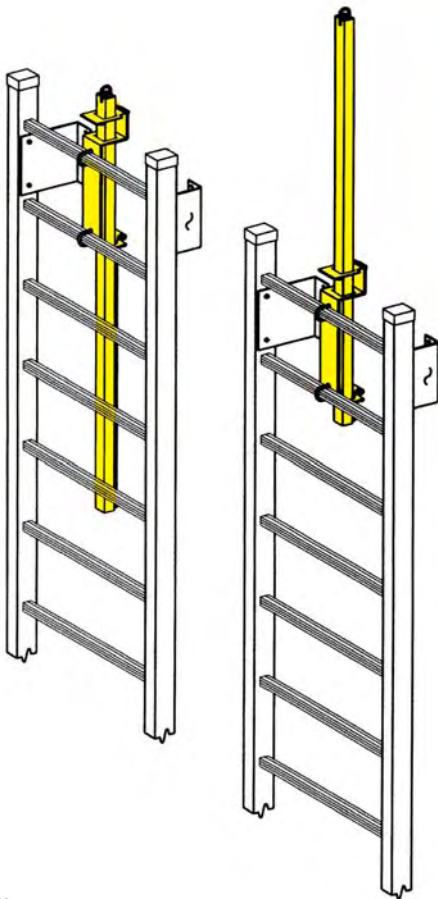
Item #	Shipping Wt. Lbs.
WB SG	-



WB SP Safety Post

Provide easier, safer ladder access through roof hatches, floor, vault, and sidewalk doors, and manholes.

- Telescoping post permanently mounts to the top two rungs of any fixed ladder providing a positive hand-hold enabling the user to enter or exit an opening in an upright and balanced position.



Standard Sizes:

Item #	Shipping Wt. Lbs.
WB SP	24

LadderUP®

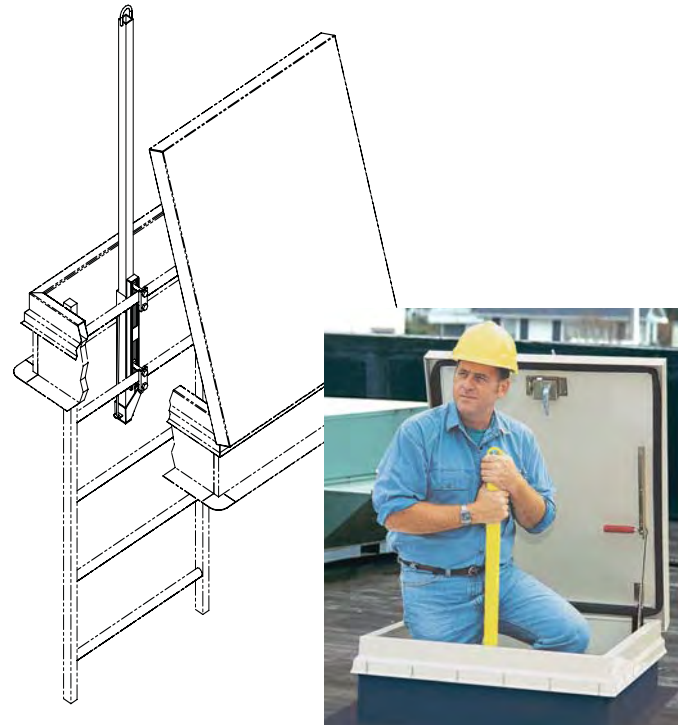
The Bilco LadderUP is furnished completely assembled, ready to mount on rear of ladder with clamp brackets on climbing side

- Bracket may be reversed to accommodate rung sizes of 3/4" to 1 1/4" with standard 2" furnished stainless steel mounting bolts. Larger rungs require longer bolts.
- Adjustable mounting fits ladders with rung spacing up to about 14" center to center
- Features pull up loop, release rod with viny lift handle, lock up bracket, balancing spring, square tubing, and adjustable mounting channel

Standard Sizes:

Item #	Shipping Wt. Lbs.
WB LU-1 Steel, yellow	24
WB LU-2 Steel, galvanized	24

LU-3 and LU-4 available upon request



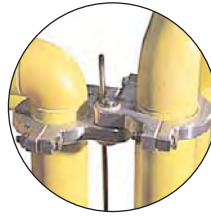
Bil-Guard® Hatch Railing System

The Bil-Guard™ Railing System. Provides a permanent means of fall protection for roof hatch openings. Meets and exceeds OSHA fall protection regulations (29 FR 1910.23). Bil-Guard® models are available for most roof hatch and automatic fire vent sizes. By Bilco.

- Posts and rails are pultruded from a fire retardant, fiberglass-reinforced polymer (FRP)
- FRP material has a molded-in, high visibility, safety yellow color and is treated with a UV inhibitor.
- Mounting brackets are fabricated from 1/4" thick hot dip galvanized steel.
- Gate hinges and post guides are constructed of 6063-T5 aluminum and torsion rod is type 302 stainless steel.
- All fasteners are type 316 stainless steel.
- Hatch rail system satisfies the requirements of OSHA 29 CFR 1910.23 and meets OSHA strength requirements with a safety factor of two.
- 25-year warranty against defects in material and workmanship.



NEW! Gate lock
Standard on all Bil-Guard Hatch Railing Systems. Automatically latches gate in the closed position



Self-Closing Gate Hinge
Continuous protection



Pivoting Mounting Sleeve
For installation flexibility

Standard Sizes:

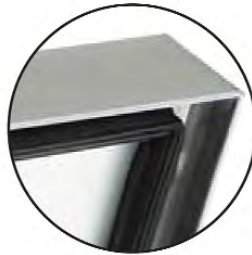
Item #	Size in Inches W x H	Shipping Wt. Lbs.
RL-S	36 x 30	52
RL-E	36 x 36	52
RL-F	48 x 48	61
RL-NB	30 x 54	60
RL-L	30 x 96	76

Enhanced Performance Roof Hatch Option

Ideal for Green Building Designs and Applications that require higher energy efficiency. The new thermally enhanced design features special gasketing and increased insulation for superior thermal performance to improve the energy efficiency of your building. Available on a number of standard roofing products. Look for this leaf logo throughout the catalog. By Bilco.



- Energy efficiency exceeds standard hatches by more than 48%•Meets LEED®standards for recycled content
- High solar reflective index (SRI)
- 2" (50mm) of ozone-friendly polyisocyanurate insulation in cover and curb
- EPDM gasketing with enhanced weather-resistance
- 11 gauge (2.3mm) mill finish aluminum construction



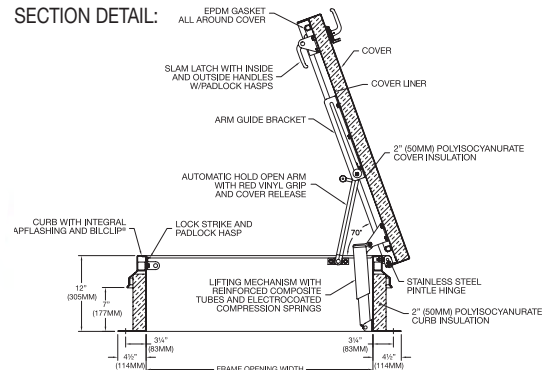
Type NB-50T



Type L-50T



Type S-20T



Type S-20T and E-50T detail shown. All other models open 90°

Locking Options for Roof, Vault and Sidewalk Doors



Keyed Cylinder Locks

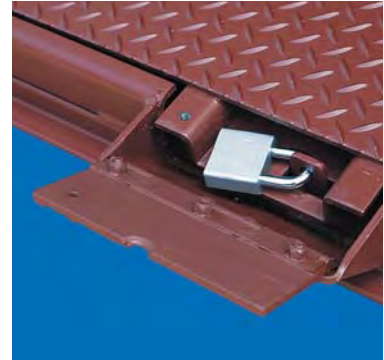
Security: Roof hatches are supplied with a standard slam lock that includes an interior and exterior padlock hasp to prevent unauthorized access.

Keyed Cylinder Locks: Deadbolt cylinder locks provide keyed exterior access and are available with either keyed or turn knob interior access. Cylinder locks are an ideal security enhancement for many applications. For added security and weathertightness, the lock cylinder is accessed from the exterior through a gasketed, treaded deck plate.



Detention Locks

Detention Locks: Detention locks provide keyed interior and exterior access and are ideal for correctional facilities and other buildings requiring a maximum level of security. For added security and weathertightness, the lock is accessed from the exterior through a gasketed, threaded deck plate. Roof hatches can be prepared for field installation of many leading lock brands.



Recessed Padlock Hasp

Emergency Egress Lock: (not shown) Roof hatches can be supplied with a panic lock for rapid egress in an emergency situation. Panic locks are available with keyed exterior access when specified.

Recessed Padlock Hasp: Floor doors can be supplied with a recessed padlock hasp lock when specified. Padlock hasps feature a flushed hinged lid and fully welded receptacle that is designed to receive a standard padlock (padlock not supplied).

WB Type S & E Roof Hatch

The easy one-hand operation to the fully open or closed position provides the user the security of having one hand firmly on the ladder at all times. Available in galvanized steel, aluminum, or stainless steel construction. Now Miami-Dade County approved.* By Bilco.

Construction Specifications:

Material—Steel: Cover and frame are 14 gauge G-90 paint bond galvanized steel **Aluminum:** Cover and frame are 11 gauge aluminum

Stainless Steel: Cover and frame are 14 gauge Type 304 stainless steel

Cover Breakformed, hollow-metal design with 1" concealed fiberglass insulation, 3" beaded, overlapping flange

Curb 12" in height with integral capflashing, 1" fiberboard insulation

Gasket Extruded EPDM rubber gasket permanently adhered to cover

Hinges Heavy-duty pintle hinges with 3/8" Type 316 stainless steel hinge pins

Latch Slam latch with interior and exterior turn handles and padlock hasps

Lift Assistance Compression spring operators enclosed in telescopic tubes

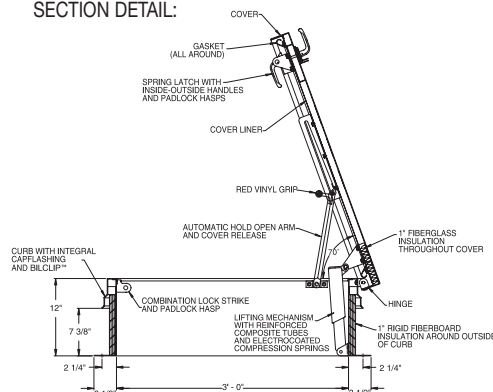
Finish—Steel: Alkyd base red oxide primer.

Aluminum: Mill finish. **Stainless Steel:** Type 304 stainless steel with sandblast finish

Hardware—Steel: Engineered composite compression spring tubes. Steel compression springs with electrocoated acrylic finish. All other hardware is zinc plated/chromate sealed

Aluminum: Engineered composite compression spring tubes. Steel compression springs with electrocoated acrylic finish. Type 316 stainless steel hinges. All other hardware is zinc plated/chromate sealed **Stainless Steel:** Type 316 stainless steel

SECTION DETAIL:



Standard Sizes:

Item #	Size in Inches W x H	Shipping Wt. Lbs.
S-20 Steel*	36 x 30	168
S-50 Aluminum*	36 x 30	135
E-20 Steel	36 x 36	192
E-50 Aluminum	36 x 36	117

*Miami-Dade County approved.

WB Type NB Ship Stair Access

ideal for installations where frequent use may be expected. Permits easier movement of maintenance personnel, tools and equipment. Available in galvanized steel, aluminum, or stainless steel construction. By Bilco.

Construction Specifications:

Material—Steel: Cover and frame are 14 gauge G-90 paint bond galvanized steel **Aluminum:** Cover and frame are 11 gauge aluminum **Stainless Steel:** Cover and frame are 14 gauge type 304 stainless steel

Cover Breakformed, hollow-metal design with 1" concealed fiberglass insulation, 3" beaded, overlapping flange, fully welded at corners, and internally reinforced for 40 psf (195 kg/m²) live load

Curb 12" in height with integral capflashing, 1" fiberboard insulation, fully welded at corners, and 3-1/2" mounting flange with 7/16" holes provided for securing frame to the roof deck

Gasket Extruded EPDM rubber gasket permanently adhered to cover

Hinges Heavy-duty pintle hinges with 3/8" Type 316 stainless steel hinge pins.

Latch Slam latch with interior and exterior turn handles and padlock hasps. (For Type NB-20HZ and NB-50HZ Miami-Dade County approved models: Specify enclosed two-point spring latch with interior and exterior turn handles and padlock hasps)

Lift Assistance Compression spring operators enclosed in telescopic tubes. Automatic hold-open arm with grip handle release

Finish—Steel: Alkyd base red oxide primer.

Aluminum: Mill finish. **Stainless Steel:** Type 304 stainless steel with sandblast finish

Hardware—Steel: Engineered composite compression spring tubes. Steel compression springs with electrocoated acrylic finish. All other hardware is zinc plated/chromate sealed **Aluminum:** Engineered composite compression spring tubes. Steel compression springs with electrocoated acrylic finish. Type 316 stainless steel hinges. All other hardware is zinc plated/ chromate sealed **Stainless Steel:** Type 316 stainless steel

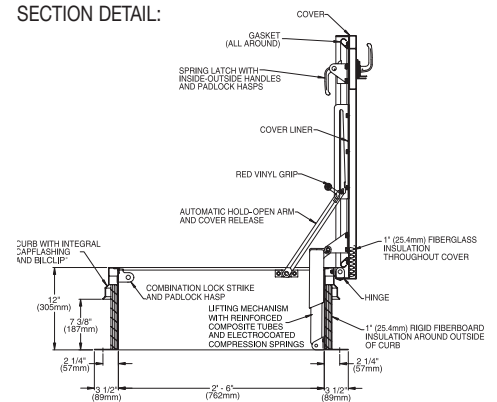
Standard Sizes:

Item #	Size in Inches W x H	Shipping Wt. Lbs.
NB-20 Steel*	30 x 54	239
NB-40 Aluminum	30 x 54	190
NB-50 Aluminum*	30 x 54	139
NB-90 Steel	30 x 54	239

*Miami-Dade County approved. (specify HZ)



SECTION DETAIL:



WB Type L Service Stair Access

ideal for installations where frequent use may be expected. Permits easier movement maintenance personnel, tools and equipment from a full size stairway. Available in galvanized steel, aluminum, or stainless steel construction. By Bilco.

Construction Specifications:

Material—Steel: Cover and frame are 14 gauge G-90 paint bond galvanized steel **Aluminum:** Cover and frame are 11 gauge aluminum

Stainless Steel: Cover and frame are 14 gauge type 304 stainless steel

Cover Breakformed, hollow-metal design with 1" concealed fiberglass insulation, 3" beaded, overlapping flange, fully welded at corners, and internally reinforced for 40 psf (195 kg/m²) live load

Curb 12" in height with integral capflashing, 1" fiberboard insulation, fully welded at corners, and 3-1/2" mounting flange with 7/16" holes provided for securing frame to the roof deck

Gasket Extruded EPDM rubber gasket permanently adhered to cover

Hinges Heavy-duty pintle hinges with 3/8" Type 316 stainless steel hinge pins.

Latch Slam latch with interior and exterior turn handles and padlock hasps.

Lift Assistance Compression spring operators enclosed in telescopic tubes. Automatic hold-open arm with grip handle release

Finish—Steel: Alkyd base red oxide primer. **Aluminum:** Mill finish. **Stainless Steel:** Type 304 stainless steel with sandblast finish

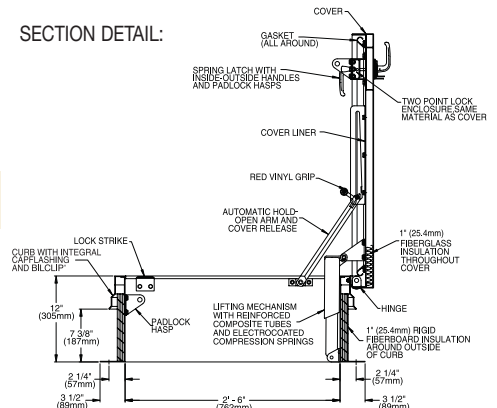
Hardware—Steel: Engineered composite compression spring tubes. Steel compression springs with electrocoated acrylic finish. All other hardware is zinc plated/chromate sealed **Aluminum:** Engineered composite compression spring tubes. Steel compression springs with electrocoated acrylic finish. Type 316 stainless steel hinges. All other hardware is zinc plated/ chromate sealed **Stainless Steel:** Type 316 stainless steel

Standard Sizes:

Item #	Size in Inches W x H	Shipping Wt. Lbs.
L-20 Steel	30 x 96	434
L-40 Steel Curb Alum Cvr	30 x 96	295
L-50 Aluminum	30 x 96	253
L-90 Stainless Steel	30 x 96	434



SECTION DETAIL:



WB Type GS Ladder Access

Provides all the security and convenience of the Type S hatch with the added benefits of a skylight. Features polycarbonate dome cover, aluminum construction, and easy one-hand operation. By Bilco.



Construction Specifications:

Material: Cover and frame are 11 gauge aluminum

Cover Aluminum extrusion with built-in condensation drainage channel and clear polycarbonate dome or double domes. Dome(s) is coated for UV-resistance

Curb 12" in height with integral capflashing, 1" fiberboard insulation, fully welded at corners, and 3-1/2" (89 mm) mounting flange with 7/16" holes provided for securing frame to the roof deck

Gasket Extruded EPDM rubber gasket permanently adhered to cover

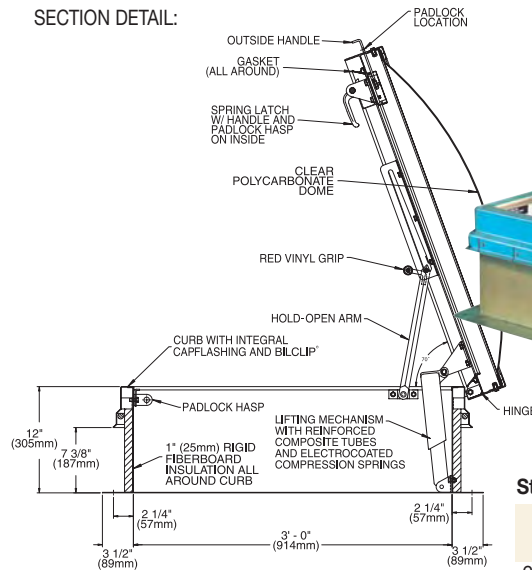
Hinges Heavy-duty pintle hinges with 3/8" Type 316 stainless steel hinge pins.

Latch Slam latch with interior and exterior turn handles and padlock hasps.

Lift Assistance Compression spring operators enclosed in telescopic tubes. Automatic hold-open arm with grip handle release

Finish: Mill finish.

Hardware: Engineered composite compression spring tubes. Steel compression springs with electrocoated acrylic finish. Type 316 Stainless steel hinges. All other hardware is zinc plated/chromate sealed.



Standard Sizes:

Item #	Size in Inches W x H	Shipping Wt. Lbs.
GS-50 Aluminum <i>single dome</i>	36 x 30	100
MGS-50 Alum <i>double dome</i>	36 x 30	135

WB Versa Mount® Access Hatch

This Hatch will expand your installation options while providing your customer with ease of operation, weathertight performance, and years of maintenance-free service. Whether your application involves new construction, retrofit, or replacement, the VersaMount curb's built-in flange and apron and innovative anchor clip system will help complete the job efficiently, professionally and permanently. By Bilco.



Construction Specifications:

Material—Steel: Cover and frame are 14 gauge G-90 paint bond galvanized steel

Aluminum: Cover and frame are 11 gauge aluminum

Stainless Steel: Cover and frame are 14 gauge type 304 stainless steel

Cover Breakformed, hollow-metal design with 1" concealed fiberglass insulation, 3" beaded, overlapping flange, fully welded at corners, and internally reinforced for 40 psf (195 kg/m²) live load

Curb 4" in height, breakformed hollow-metal design with 1" concealed fiberglass insulation, 2-5/8" mounting flange and 1-1/2" (38 mm) apron, fully welded at corners. Stainless steel anchor clips are included

Gasket Extruded EPDM rubber gasket permanently adhered to cover

Hinges Heavy-duty pintle hinges with 3/8" Type 316 stainless steel hinge pins.

Latch Slam latch with interior and exterior turn handles and padlock hasps.

Lift Assistance Compression spring operators enclosed in telescopic tubes. Automatic hold-open arm with grip handle release

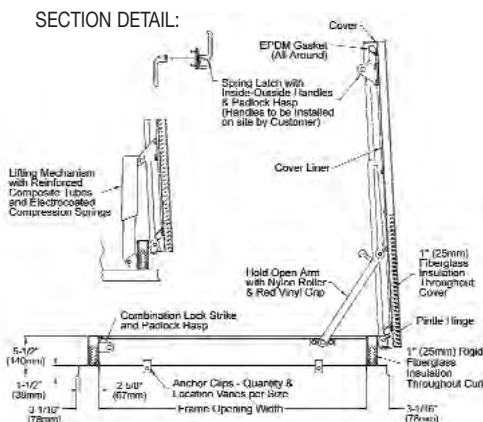
Finish—Steel: Alkyd base red oxide primer.

Aluminum: Mill finish. **Stainless Steel:** Type 304 stainless steel with sandblast finish

Hardware—Steel: Engineered composite compression spring tubes. Steel compression springs with electrocoated acrylic finish. All other hardware is zinc plated/chromate sealed

Aluminum: Engineered composite compression spring tubes. Steel compression springs with electrocoated acrylic finish. Type 316 stainless steel hinges. All other hardware is zinc plated/ chromate sealed

Stainless Steel: Type 316 stainless steel



Standard Sizes:

Item #	Size W x H	Shipping Wt. Lbs.
S-20VM Steel	36" x 30"	152
NB-20VM Steel	30" x 54"	180
L-20VM Steel	30" x 96"	320
S-50VM Aluminum	36" x 30"	86
NB-50VM Aluminum	30" x 54"	100
L-50VM Aluminum	30" x 96"	178
S-90VM Stainless Steel	36" x 30"	152
NB-90VM Stainless Steel	30" x 54"	180
L-90VM Stainless Steel	30" x 96"	320

WB Type DSH Automatic Fire Vent

DSH series fire vents are available in a number of standard UL-listed and FM-approved sizes. Features include fully insulated covers and galvanized steel or aluminum construction. By Bilco.

Construction Specifications:

Material—Steel: Cover and frame are 14 gauge G-90 paint bond galvanized steel **Aluminum:** Cover and frame are 11 gauge aluminum

Covers Breakformed, hollow-metal design with 1" concealed fiberglass insulation, 3" beaded, overlapping flange, fully welded at corners, and internally reinforced for 40 psf (195 kg/m²) live load

Curb 12" in height with integral capflashing, 1" fiberboard insulation, fully welded at corners, and 3-1/2" mounting flange with 7/16" holes provided for securing frame to the roof deck

Gasket Extruded EPDM rubber gasket permanently adhered to the covers

Hinges Heavy-duty pintle hinges with 3/8" Type 316 stainless steel hinge pins

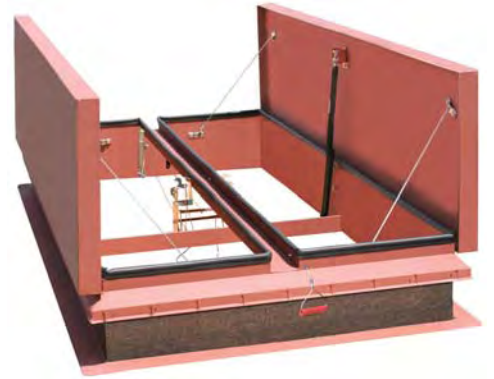
Latch Positive hold/release mechanism controlled by a single UL-listed 165°F (74°C) fusible link with a separate latching point for each cover. Designed to hold the covers closed against a 90 psf (438 kg/m²) wind uplift force.

Performance Ratings UL-listed. Complies with UL 790 Class A (burning brand test).

Finish—Steel: Alkyd base red oxide primer, **Aluminum:** Mill finish

Hardware—Steel: Engineered composite compression spring tubes. Steel compression springs with electrocoated acrylic finish. All other hardware is zinc plated/chromate sealed.

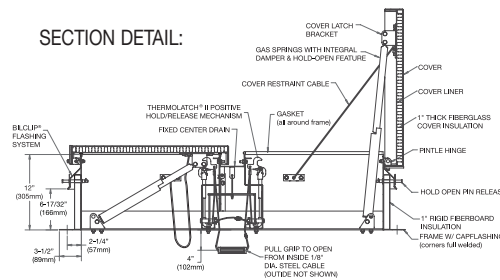
Aluminum: Engineered composite compression spring tubes. Steel compression springs with electrocoated acrylic finish. Type 316 stainless steel hinges. All other hardware is zinc plated/chromate sealed.



Standard Sizes:

Item #	Size W x H	Shipping Wt. Lbs.
DSH4848 Steel	48 x 48	367
DSH4872 Steel	48 x 72	455
DSH4890 Steel	48 x 60	695
DSH4896 St Curb-Al Cvr	48 x 96	485
DSH6060 Aluminum	60 x 60	330

SECTION DETAIL:



WB Type SV Fire Vent

For applications requiring smaller vents, single leaf models are available in galvanized steel or aluminum construction and can be provided with polycarbonate domes for added daylight. By Bilco.

Construction Specifications:

Material—Steel: Cover and frame are 14 gauge G-90 paint bond galvanized steel **Aluminum:** Cover and frame are 11 gauge aluminum

Cover Breakformed, hollow-metal design with 1" concealed fiberglass insulation, 3" beaded, overlapping flange, fully welded at corners, and internally reinforced for 40 psf (195 kg/m²) live load

Gasket Extruded EPDM rubber gasket permanently adhered to the cover

Hinges Heavy-duty pintle hinges with 3/8" Type 316 stainless steel hinge pins

Latch Positive hold/release mechanism controlled by a single UL-listed 165°F (74°C) fusible link. Designed to hold the cover closed against a 90 psf (438 kg/m²) uplift force.

Performance Rating Comply with UL 790 Class A (burning brand test)

Finish—Steel: Alkyd base red oxide primer; **Aluminum:** Mill finish

Hardware—Steel: Engineered composite compression spring tubes. Steel compression springs with electrocoated acrylic finish. All other hardware is zinc plated/chromate sealed.

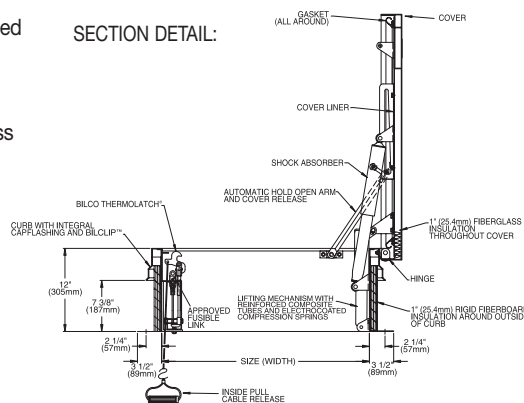
Aluminum: Engineered composite compression spring tubes. Steel compression springs with electrocoated acrylic finish. Type 316 stainless steel hinges. All other hardware is zinc plated/chromate sealed.



Standard Sizes:

Item #	Size W x H	Shipping Wt. Lbs.
S-20SV Steel	36" x 30"	193
NB-20SV Steel	30" x 54"	260
L-20SV Steel	30" x 96"	423
S-40SV St Curb-Al Cvr	36" x 30"	160
NB-40SV St Curb-Al Cvr	30" x 54"	215
L-40SV St Curb-Al Cvr	30" x 96"	315
S-50SV Aluminum	36" x 30"	112
NB-50SV Aluminum	30" x 54"	155
L-50SV Aluminum	30" x 96"	240

SECTION DETAIL:



WB Lumivent® Automatic Fire Vent

All the security and value of an automatic fire vent with the added benefits of a skylight. The Lumivent is UL-listed and features a multi-wall polycarbonate cover design that resists UV degradation and offers superior insulation performance over traditional domes. By Bilco.

Construction Specifications:

Material Cover and frame are 11 gauge aluminum

Covers Constructed with a translucent multi-wall polycarbonate sheet framed with rigid extruded aluminum and coated for UV resistance. Glazing shall provide an R-factor of 2.38 per ASTM D236

Curb 12" in height with integral capflashing, 1" fiberboard insulation, fully welded at corners, and 3-1/2" mounting flange with 7/16" holes provided for securing frame to the roof deck

Gasket Dual durometer, co-extruded, EPDM rubber gasket mechanically fastened to the top of the curb

Hinges Heavy-duty pintle hinges with 3/8" Type 316 stainless steel hinge pins

Latch Positive hold/release mechanism controlled by a single UL-listed 165°F (74°C) fusible link with a separate latching point for each cover. Designed to hold the covers closed against a 90 psf (438 kg/m²) wind uplift force

Operation High performance gas springs open covers automatically against a 10 psf (49 kg/m²) snow/wind load when released. Gas springs have integral dampers to assure a controlled rate of cover opening and have a cyclic durability of 50,000 cycles. Automatic hold-open arms lock each cover in the full open position

Performance Ratings UL-listed and FM-approved. Comply with UL 790 Class A (burning brand test).

Finish: Mill finish

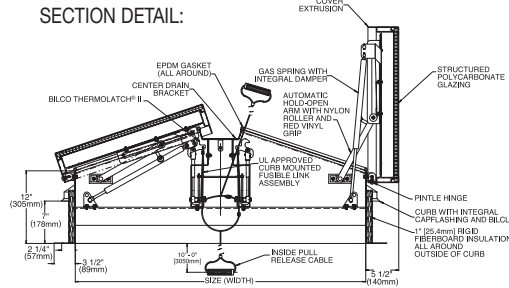
Hardware Gas springs have a powder coated outer tube and chrome plated inner rod. Hinges are type 316 stainless steel hinges. All other hardware is zinc plated/chromate sealed



Standard Sizes:

Item #	Size in Inches W x H	Shipping Wt. Lbs.
LV4848B Aluminum	48 x 48	218
LV4872B Aluminum	48 x 72	296
LV4896B Aluminum	48 x 96	341
LV6060B Aluminum	60 x 60	308
LV6090B Aluminum	60 x 90	388
LV66144B Aluminum	66 x 144	722

SECTION DETAIL:



WB Type J-AL & JD-AL Aluminum Drainage Door

Ideal for most corrosive environments. Single or double leaf design and are constructed of aluminum diamond pattern plate that is reinforced for a 300 PSF pedestrian load. Channel frame design features a threaded drain coupling for connection to a dry or wet well. Standard Type 316 Stainless Steel Hardware. By Bilco.

Construction Specifications:

Material Cover and frame are 1/4" (6 mm) aluminum

Cover Diamond-pattern tread plate reinforced for 300 psf (1464 kg/m²) live load

Frame Extruded aluminum channel frame with bend down anchor tabs around the perimeter. A 1-1/2" drain coupling is welded under the frame for a pipe connection to a dry well or disposal system

Hinges Heavy forged brass hinges with 3/8" Type 316 stainless steel hinge pins

Latch Type 316 stainless steel slam lock with fixed interior handle and removable exterior turn/lift handle. Latch release is protected by a flush, gasketed, removable screw plug

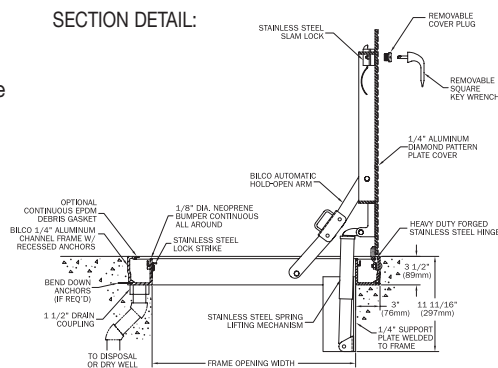
Lift Assistance Compression spring operators enclosed in telescopic tubes. Automatic hold-open arm with grip handle release.

Finish Mill Finish aluminum with a bituminous coating applied to the exterior of the frame

Hardware Type 316 stainless steel



SECTION DETAIL:



Standard Sizes:

Item #	Size W x H	Shipping Wt. Lbs.
J-1AL Aluminum	24 x 24	65
J-2AL Aluminum	30 x 30	88
J-3AL Aluminum	36 x 30	97
J-4AL Aluminum	36 x 36	108
J-5AL Aluminum	42 x 42	135

JD-AL available upon request (double leaf)

WB Type J-AL H20, JD-AL H20 Aluminum Drainage Door

Ideal for most corrosive environments. Designed to withstand vehicular traffic in off-street locations. Single or double leaf design and are constructed of aluminum diamond pattern plate that is reinforced for AASHTO H-20 wheel load. Channel frame design features a threaded drain coupling for connection to a dry or wet well. Standard Type 316 stainless steel hardware. By Bilco.

Construction Specifications:

Material Cover and frame are 1/4" (6 mm) aluminum

Cover Diamond-pattern tread plate reinforced for H-20 wheel loading. Designed for installation in off street locations where the door is not subjected to high density, fast moving traffic. Structural calculations available upon requested

Frame Extruded aluminum channel frame with bend down anchor tabs around the perimeter. A 1-1/2" drain coupling is welded under the frame for a pipe connection to a dry well or disposal system

Hinges Heavy forged brass hinges with 3/8" Type 316 stainless steel hinge pins

Latch Type 316 stainless steel slam lock with fixed interior handle and removable exterior turn/lift handle. Latch release is protected by a flush, gasketed, removable screw plug

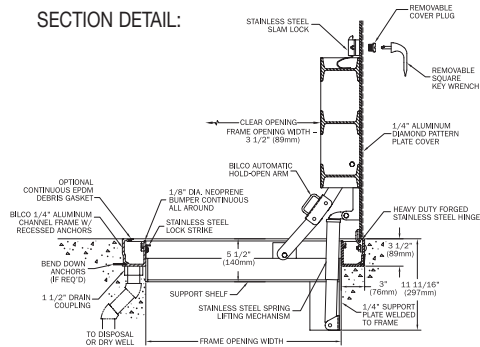
Lift Assistance Compression spring operators enclosed in telescopic tubes. Automatic hold-open arm with grip handle release.

Finish Mill Finish aluminum with a bituminous coating applied to the exterior of the frame

Hardware Type 316 stainless steel



SECTION DETAIL:



Standard Sizes:

Item #	Size W x H	Shipping Wt. Lbs.
J-1AL H20 Alum	24 x 24	65
J-2AL H20 Alum	30 x 30	88
J-3AL H20 Alum	36 x 30	97
J-4AL H20 Alum	36 x 36	108
J-5AL H20 Alum	42 x 42	135

JD-AL H20 available upon request (double leaf)

WB Type J-H20, JD-H20 Steel Drainage Door

Single or double leaf access doors (single leaf shown) are constructed of diamond pattern plate and reinforced for AASHTO H-20 wheel loading. Features reinforced composite spring tubes, heavy forged brass hinges, and zinc plated/chromate sealed hardware. By Bilco.

Construction Specifications:

Material Cover and frame are 1/4" steel

Cover Diamond-pattern tread plate reinforced for H-20 wheel loading. Designed for installation in off street locations where the door is not subjected to high density, fast moving traffic. Structural calculations available upon requested

Frame Formed channel frame with full anchor angle welded around the perimeter. A 1-1/2" drain coupling is welded under the frame for a pipe connection to a dry well or disposal system

Hinges Heavy forged brass hinges with 3/8" Type 316 stainless steel hinge pins

Latch Type 316 stainless steel slam lock with fixed interior handle and removable exterior turn/lift handle. Latch release is protected by a flush, gasketed, removable screw plug

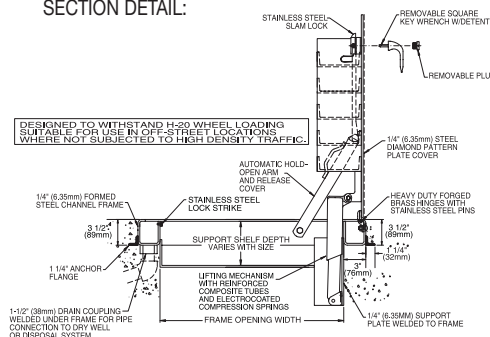
Lift Assistance Compression spring operators enclosed in telescopic tubes. Automatic hold-open arm with grip handle release.

Finish Alkyd base red oxide primer

Hardware Engineered composite compression spring tubes. Steel compression springs with electrocoated acrylic finish. Slam lock and all fasteners are type 316 stainless steel. All other hardware is zinc plated/chromate sealed



SECTION DETAIL:



Standard Sizes:

Item #	Size W x H	Shipping Wt. Lbs.
J-1 H20 Steel	24 x 24	65
J-2 H20 Steel	30 x 30	88
J-3 H20 Steel	36 x 30	97
J-4 H20 Steel	36 x 36	108
J-5 H20 Steel	42 x 42	135

JD-H20 available upon request (double leaf)

WB Type J & JD Steel Drainage Door

Single or double leaf covers are constructed of 1/4" (6.35mm) diamond pattern plate and reinforced for a 300 lb/ft² (1464 kg/m²) liveload. Features reinforced composite spring tubes, heavy forged brass hinges, and zinc plated/chromate sealed hardware. By Bilco.

Construction Specifications:

Material Cover and frame are 1/4" steel

Cover Diamond-pattern tread plate reinforced for 300 psf (1464 kg/m²) live load

Frame Formed channel frame with full anchor angle welded around the perimeter. A 1-1/2" drain coupling is welded under the frame for a pipe connection to a dry well or disposal system.

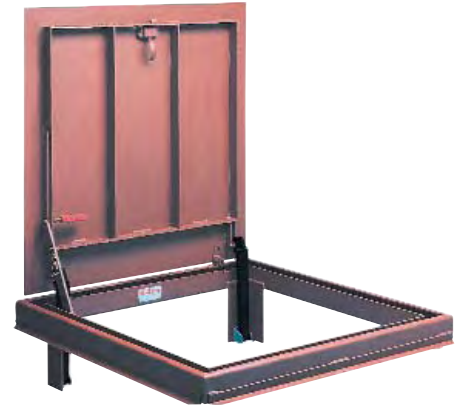
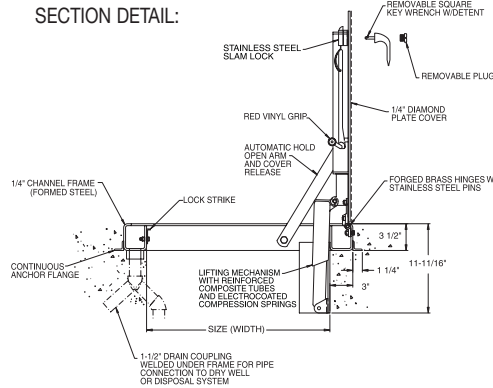
Hinges Heavy forged brass hinges with 3/8" Type 316 stainless steel hinge pins

Latch Type 316 stainless steel slam lock with fixed interior handle and removable exterior turn/lift handle. Latch release is protected by a flush, gasketed, removable screw plug

Lift Assistance Compression spring operators enclosed in telescopic tubes. Automatic hold-open arm with grip handle release.

Finish Alkyd base red oxide primer

Hardware Engineered composite compression spring tubes. Steel compression springs with electrocoated acrylic finish. Slam lock and all fasteners are Type 316 stainless steel. All other hardware is zinc plated/chromate sealed.



Standard Sizes:

Item #	Size W x H	Shipping Wt. Lbs.
J-1 Steel	24 x 24	50
J-2 Steel	30 x 30	65
J-3 Steel	36 x 30	77
J-4 Steel	36 x 36	86
J-5 Steel	40 x 40	109

JD available upon request (double leaf)

WB Type K & KG Floor Hatch

Aluminum non-drainage door single or double leaf covers are constructed of 1/4" diamond pattern plate and reinforced for a 150 lb/ft² (732 kg/m²) live load. Features zinc plated and chromate sealed hardware, concealed hinges, and the T-CAM[®] lifting system for ease of operation. By Bilco.

Construction Specifications:

Material Cover and frame are 1/4" aluminum

Cover Diamond-pattern tread plate reinforced for 150 psf (732 kg/m²) live load

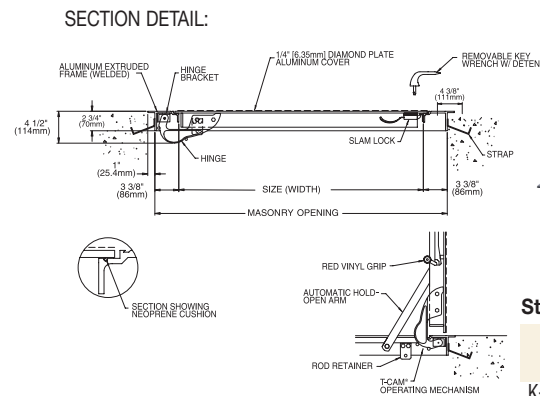
Frame Extruded aluminum angle frame with strap anchors bolted around the perimeter

Hinges Cast steel cam-action hinges that are concealed from the exterior of the door Latch Type 316 stainless steel slam lock with fixed interior handle and removable exterior turn/lift handle

Lift Assistance Torsion bars that pivot on cam-action hinges. Automatic hold-open arm with grip handle release

Finish Mill finish aluminum with a bituminous coating applied to the exterior of the frame

Hardware Zinc plated/chromate sealed



Standard Sizes:

Item #	Size W x H	Shipping Wt. Lbs.
K-1 Aluminum	24 x 24	50
K-2 Aluminum	30 x 30	65
K-3 Aluminum	36 x 30	77
K-4 Aluminum	36 x 36	86
K-5 Aluminum	42 x 42	109

KD available upon request (double leaf)

WB Type Q Floor Hatch

Steel non-drainage single leaf covers are constructed of 1/4" diamond pattern plate and reinforced for a 150 lb/ft² (732 kg/m²) live load. Features zinc plated and chromate sealed hardware, concealed hinges, and the T-CAM® lifting system for ease of operation. By Bilco.

Construction Specifications:

Material Cover and frame are 1/4" steel

Cover Diamond-pattern tread plate reinforced for 150 psf (732 kg/m²) live load

Frame Steel angle frame with strap anchors welded around the perimeter

Hinges Cast steel cam-action hinges that are concealed from the exterior of the door

Latch Type 316 stainless steel slam lock with fixed interior handle and removable exterior turn/lift handle

Lift Assistance Torsion bars that pivot on cam-action hinges. Automatic hold-open arm with grip handle release

Finish Alkyd base red oxide primer

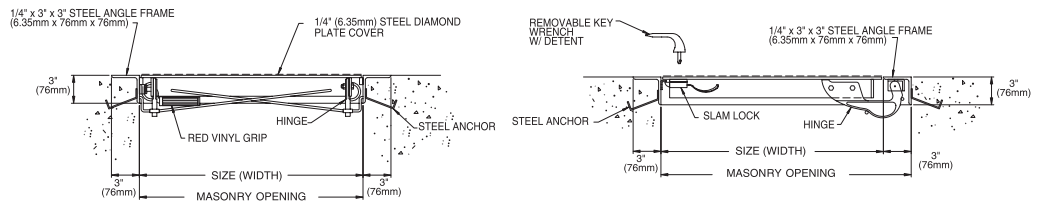
Hardware Zinc plated/chromate sealed

Standard Sizes:

Item #	Size W x H	Shipping Wt. Lbs.
Q-1 Steel	24 x 24	122
Q-2 Steel	30 x 30	166
Q-3 Steel	36 x 30	190
Q-4 Steel	42 x 42	219

Q-D1 (steel double leaf) available upon request
Q-1AL (Aluminum) and Q-DAL (Aluminum double leaf) available upon request

SECTION DETAIL:



WB Type T & TD Floor Hatch

Aluminum non-drainage door accepts carpet and composition flooring material 1/8" or 3/16" in thickness. Single or double leaf doors are virtually hidden in interior applications. Features cover and frame mounted molding strips to accept floor covering and Type K hardware and construction. By Bilco.

Construction Specifications:

Material Cover and frame are 1/4" steel

Cover Diamond-pattern tread plate reinforced for 150 psf (732 kg/m²) live load

Frame Steel angle frame with strap anchors welded around the perimeter

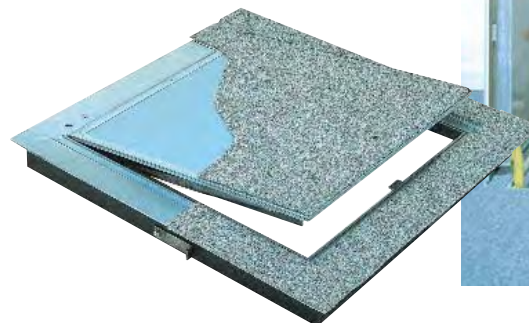
Hinges Cast steel cam-action hinges that are concealed from the exterior of the door

Latch Type 316 stainless steel slam lock with fixed interior handle and removable exterior turn/lift handle

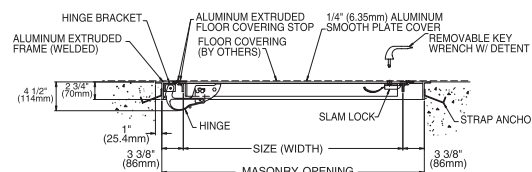
Lift Assistance Torsion bars that pivot on cam-action hinges. Automatic hold-open arm with grip handle release

Finish Mill finish aluminum with a bituminous coating applied to the exterior of the frame

Hardware Zinc plated/chromate sealed



SECTION DETAIL:



Standard Sizes:

Item #	Size in Inches W x H	Shipping Wt. Lbs.
T-1 Aluminum	24 x 24	53
T-2 Aluminum	30 x 30	68
T-3 Aluminum	36 x 30	81
T-4 Aluminum	36 x 36	91

TD available upon request (double leaf)

WB Type TER & TRD Floor Hatch

Aluminum non-drainage door accepts architectural flooring material. Similar to Type T in function, these single and double leaf doors are designed with a pan cover to accept a variety of flooring materials up to 1" in thickness. Each door is spring balanced to ensure smooth, easy operation upon installation of the specified flooring material in the field. Note: Available with drain coupling for drainage applications. By Bilco.

Construction Specifications:

Material Cover and frame are 1/4" aluminum

Cover Smooth plate reinforced for 150 psf (732 kg/m²) live load. Cover designed with 1" filmable pan for field installation of architectural flooring material (specify flooring material including type, thickness, and weight).

Frame Extruded aluminum frame with built in anchor flange around the perimeter

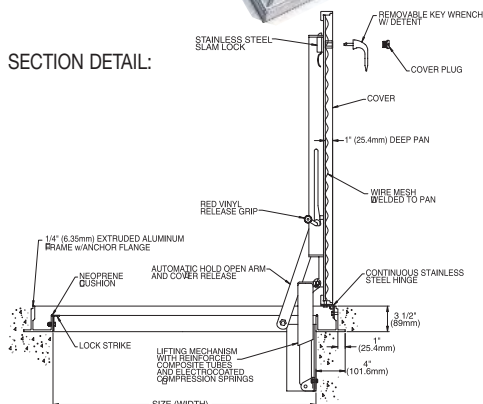
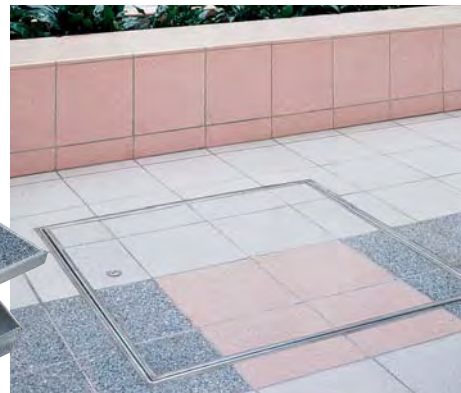
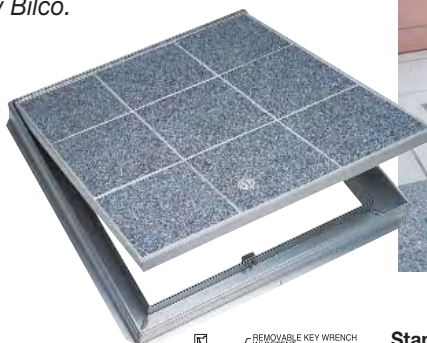
Hinges Continuous heavy-duty Type 316 stainless steel hinge

Latch Type 316 stainless steel slam lock with fixed interior handle and removable exterior turn/lift handle. Latch release is protected by a flush, gasketed, removable screw plug.

Lift Assistance Compression spring operators enclosed in telescopic tubes. Automatic hold-open arm with grip handle release

Finish Mill finish aluminum with a bituminous coating applied to the exterior of the frame

Hardware Engineered composite compression spring tubes. Steel compression springs with electrocoated acrylic finish. Type 316 stainless steel hinges. All other hardware is zinc plated/chromate sealed.



Standard Sizes:

Item #	Size W x H	Shipping Wt. Lbs.
TER-1 Aluminum	24 x 24	100
TER-2 Aluminum	30 x 30	110
TER-3 Aluminum	36 x 30	120
TER-4 Aluminum	36 x 36	130

TRD available upon request (double leaf)

WB Type FR & FRLC Fire Rated Floor Hatch

Maintains the fire rating of a 2-hour floor/ceiling assembly where access is required between building floors. Features include an optional UL Listed automatic closing system, intumescent fire resistant coating, and a pan cover designed to accept architectural flooring materials. New self-closing mechanism with simplified design takes up less frame area. Specify Type FR-LC if closing mechanism is not required by local fire authorities having jurisdiction. By Bilco.

Construction Specifications:

Material Cover and frame are 1/4" aluminum

Cover Aluminum plate reinforced for 150 psf (732 kg/m²) live load

Frame Extruded aluminum frame with built in anchor flange around the perimeter

Hinges Continuous heavy-duty Type 316 stainless steel hinge

Latch Pneumatic self closing system that automatically closes the door in the event of a fire when heat parts a UL-listed 165°F (74°C) fusible link

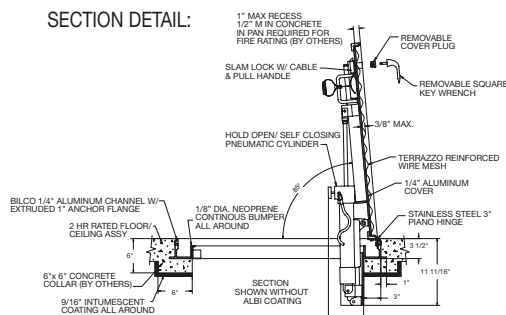
Lift Assistance Compression spring operators enclosed in telescopic tubes.

Performance Ratings Tested in accordance with ASTM E119, NFPA 251, BS476: Part 22 and UL-listed (File R15197) as having a 2-hour fire rating when exposed to fire from the underside.

Compliance Self-closing mechanism complies with ASTM E119, NFPA 80, NFPA 251 and BS476: Part 22

Finish Mill finish aluminum with a bituminous coating applied to the exterior of the frame

Hardware Engineered composite compression spring tubes. Steel compression springs with electrocoated acrylic finish. Type 316 stainless steel hinges. All other hardware is zinc plated/chromate sealed.



Standard Sizes:

Item #	Size W x H	Shipping Wt. Lbs.
FR-2 Aluminum	30 x 30	271
FR-3 Aluminum	36 x 30	277
FR-4 Aluminum	36 x 36	326
FR-5 Aluminum	42 x 42	368
FR-6 Aluminum	30 x 48	328

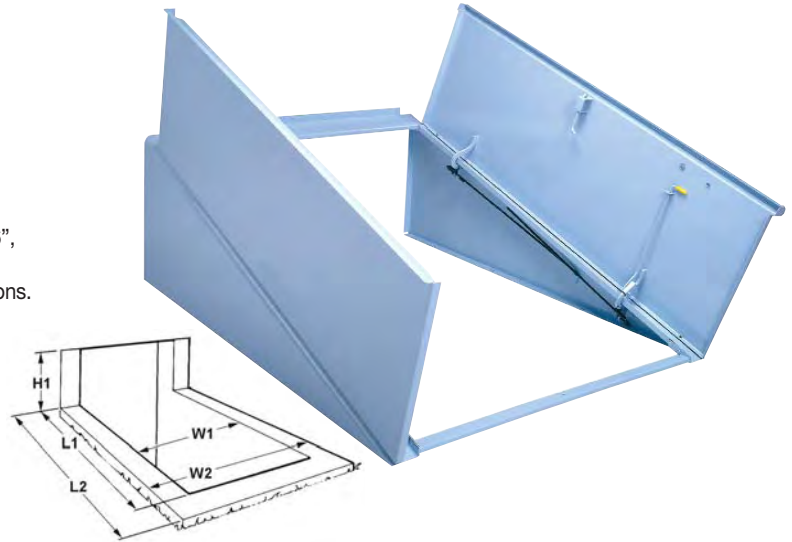
FR-LC available upon request if closing mechanism is not required by local fire authorities having jurisdiction

WB Classic Series Residential Basement Door

- Heavy-duty steel construction
 - Flow-coated, baked-on factory prime finish
 - Corrosion-resistant zinc-plated, chromate-sealed hardware
 - Torsion Cam Lift system provides easy, one-hand operation
 - Slide bolt locking mechanism (optional keyed lock available)
 - Flanged construction and J-channel header shed water and prevent binding due to ice and snow, permitting all season use
 - Extensions are available to increase the door length - Classic Series: 6", 12", 18" and 24" lengths
- Two or more extensions can be mounted back to back for longer extensions.

Standard Sizes:

Item #	Size in Inches W x L x H
WB Classic-C	55 x 72 x 19-1/2

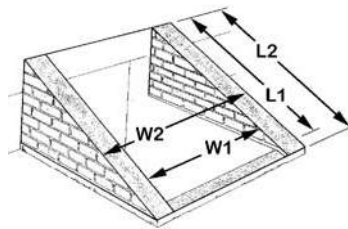


WB Classic Series Sloped Wall Residential Basement Door

Type SLW doors are designed for installation on areaways with sloped side-walls built into the homes foundation. Doors can be installed on sidewalls of brick, stone, block, or poured concrete and are supplied with instructions and hardware for proper installation. By Bilco

Standard Sizes:

Item #	Size in Inches W x L x H
WB Classic SLW	55 x 72 x 19-1/2



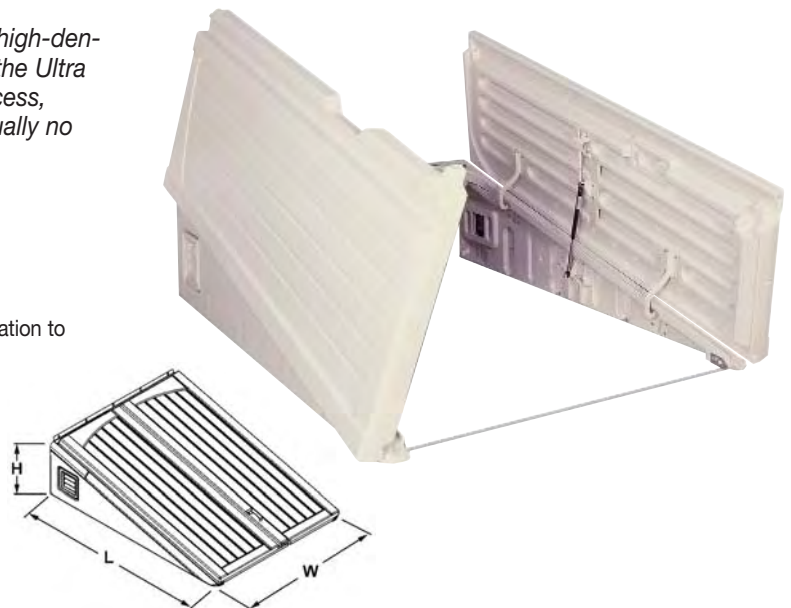
WB Ultra Series Residential Basement Door

The beauty of a wooden door, without the work. Made from high-density polyethylene and engineered to exacting specifications, the Ultra Series door provides safe and code-compliant basement access, weather-tight performance and easy operation—all with virtually no maintenance. By Bilco

- Corrosion-resistant high-density polyethylene construction
- Simulated wood design
- Pleasing driftwood color
- Will not rust and never needs painting
- Interchangeable side panel inserts allow you to add light and/or ventilation to your basement areaway
- Gas spring lift assistance for easy, one-hand operation
- Slide bolt locking mechanism (optional keyed lock available)
- Extensions are available to increase the door length - Ultra Series: 6" and 12" lengths only

Standard Sizes:

Item #	Size in Inches W x L x H
WB Ultra-C	55 x 72 x 19-1/2



WB Fixed Vertical Ladder

Introducing Our New Easy Access Aluminum Fixed Vertical Ladders

Williams Brothers offers a complete line of aluminum vertical ladders custom fabricated to your exact field measurements. .
By Precision Ladders, LLC

Product Features:

- FL series—Aluminum Fixed Vertical Ladders are Precision Ladders' channel side rail design. Treads are attached to siderails using 4 rivets rated at 1100 lbs. shear strength each. Additionally, all edges on the side rails and treads have been rounded for a burr-free surface, providing a more comfortable, powerful grip for the hands.
- Treads are a full 2-1/4" deep and are serrated to maximize traction. These treads have been thoroughly tested for strength, and are able to withstand a 1000 pound loading without failure.
- Safety cages are required on most ladders in excess of 20' length to a maximum unbroken length of 30' (plus rail extensions). Cages are also recommended for shorter ladders at high or hazardous locations.
- Other options include, but not limited to; Security Doors with stainless steel piano hinge and padlock provision, Floor Brackets with pre-drilled holes for attaching ladders to the floor, Walk-Thrus, Overshoots, Parapet Platforms and Returns as well as Rest Platforms, Security Gates for Cages, and many more customized options
- Mill finish is standard. Other finish options; Anodized and Powder coat

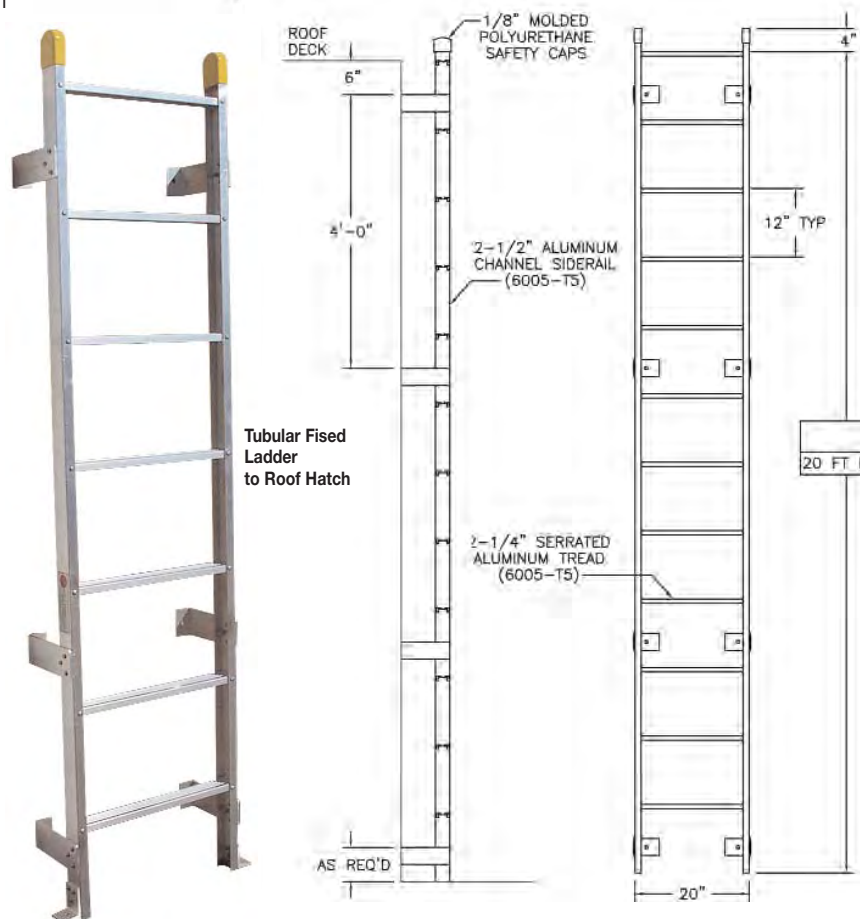
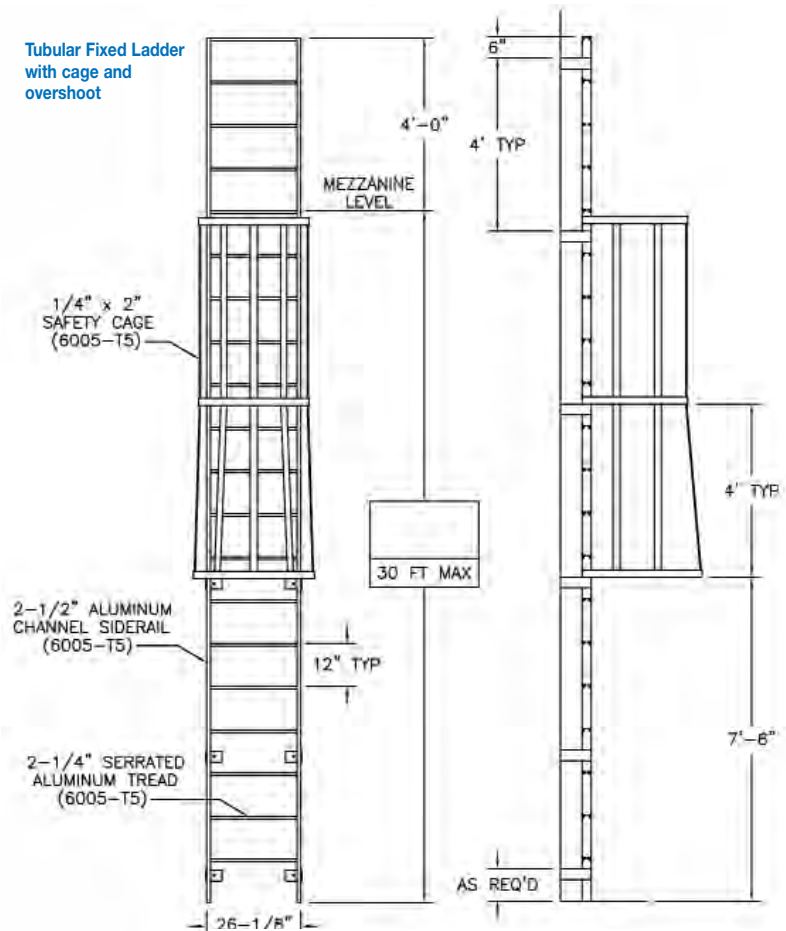
NOTE: When accessing a roof from a building's interior consider combining the ladder with a Roof Hatch, Safety Post, Safety Grab or a WB Guard Rail system with self closing gate. This gives customers the option of a complete roof access system from a single source.

Available in 10, 12, 14, 16, and 18 feet

Tubular Fixed Ladder with cage and overshoot



Tubular Fixed Ladder with cage and overshoot



Tubular Fixed Ladder to Roof Hatch

WB Super Simplex Disappearing Stairway

Introducing Our New Disappearing Attic or Roof Access Ladder. By Precision Ladders, LLC

Construction Features:

- Customized to meet most job conditions
- Built to the exact finished ceiling and floor/roof deck heights
- Meets requirements of A.N.S.I. A14.9 for "Commercial" or "Residential" use
- Test weight of 500 Lbs
- Individual tread test weights of 1000 Lbs
- Actual shear of rivets tested to 1175 Lbs
- 11 ga. formed steel frame
- Extruded aluminum treads and side rails
- 5 3/16" tread depth
- Can accommodate ceiling heights up to 13' 6"

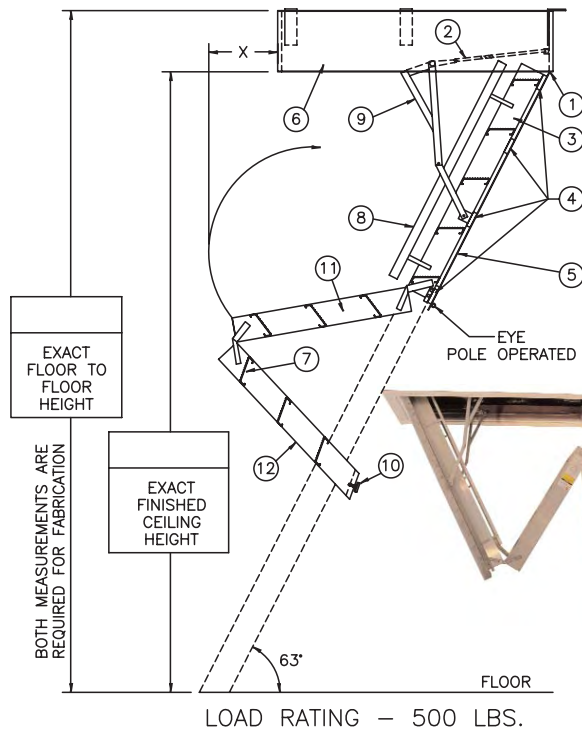
Options:

- Units available for both non-rated and fire rated ceilings
- Lock on door panel (std on fire-rated units)
- Special Deep Box and Deep Angle frames to accommodate dropped ceilings
- 2 hour fire-rated Warnock Hersey label that meets ASTM-E-119 and UBC 43-7 requirements, passed 250o temperature rise in the first 30 minutes
- Fold-Assist (std on units 9'-10' and taller)
- For units accessing a roof, custom roof hatches are produced and factory mounted then shipped to the job site as one complete roof access system

LOAD CAPACITY:

500lbs.

Combined Weight of User and Materials



LADDER LEGEND

- | | |
|---------------------------|------------------------------|
| 1. STEEL PIANO DOOR HINGE | 7. TREAD (SERRATED ALUM.) |
| 2. DOUBLE SPRING ACTION | 8. HANDRAIL RIGHT SIDE ONLY |
| 3. SIDE RUNNER 5" ALUM. | 9. EXTRA HEAVY OPERATING ARM |
| 4. BATTEN 1/8" ALUM. | 10. ADJUSTABLE FOOT |
| 5. DOOR PANEL 1/8" ALUM. | 11. MIDDLE SECTION |
| 6. STEEL BOX FRAME | 12. BOTTOM SECTION |



Fire-Rated pictured

WB Fire Rated Ladder Access Hatch

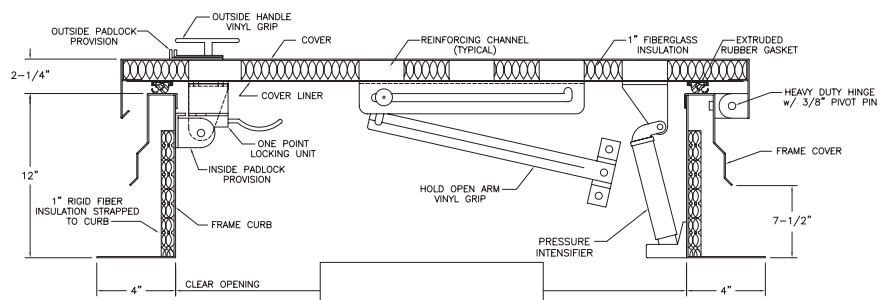
Our Fire Rated access hatch that can be installed with our new disappearing attic or roof ladder. By Precision Ladders, LLC

Construction Features:

- Galvanized Steel (prime painted) option: 14 ga. cover, frame cover and frame curb; 22 ga. cover liner
- Aluminum (mill finish) option: 11 ga. cover, frame cover, and frame curb; 18 ga. cover liner

Options:

- 1 1/2" curb insulation
- Double wall curb
- Stainless steel hardware



Purchase Your Complete Roof and Floor Access System at Williams Brothers Corporation of America

We have your complete **WALL & CEILING ACCESS, ROOF & FLOOR ACCESS** needs **ALL UNDER ONE ROOF**. Order all your metal access doors, roof and floor hatches, fixed access ladders, attic access ladders and the safety guard railing system with one toll free call: **1-800-255-5515**



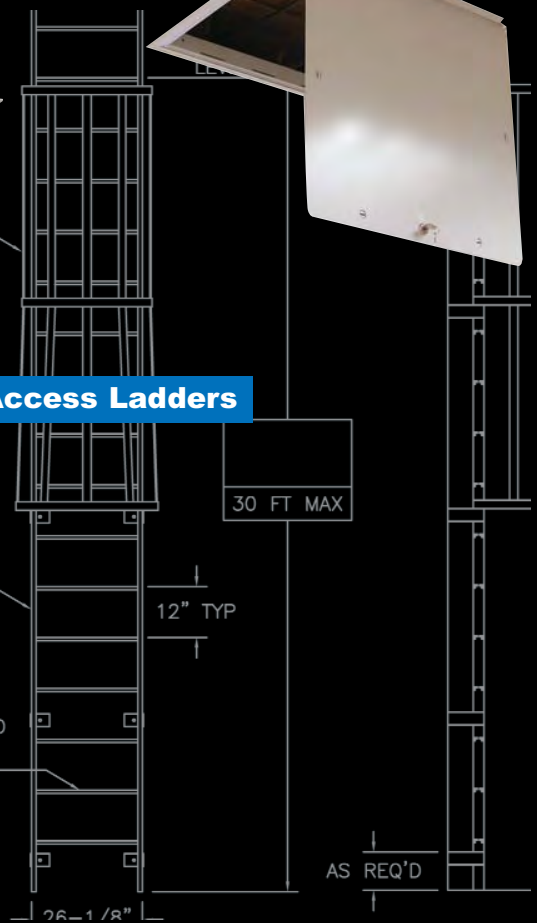
Premium Metal Access Doors



Roof & Floor Hatches

4" x 2"
SAFETY CAGE
(6005-T5)

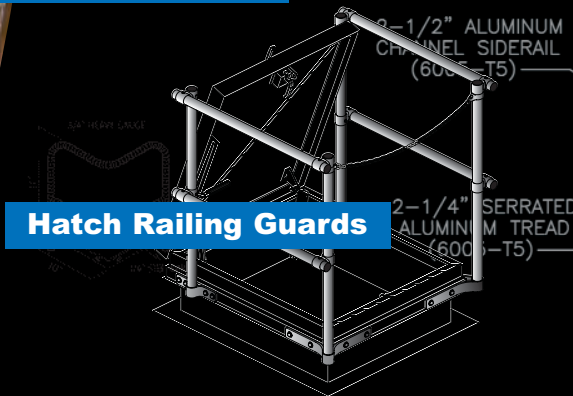
Fixed Access Ladders



Attic Access Ladders



Hatch Railing Guards



2-1/2" ALUMINUM
CHANNEL SIDERAIL
(6005-T5)

2-1/4" SERRATED
ALUMINUM TREAD
(6005-T5)

See our full product line and download submittals and CAD drawings at www.wbdoors.com

DISTRIBUTED INTERNATIONALLY BY:



**The Williams Bros.
Corporation of
America**

Corporate Office
1330 Progress Drive, Front Royal, VA 22630

Western Distribution Center
4058 S. McCarran Blvd., Bldg.A, Reno, NV 89502

Phone: 1-800-255-5515 • Fax: 1-800-822-5001
Website: www.wbdoors.com

For country of manufacture of all Williams Brothers products please call us or visit our website at www.wbdoors.com