

### Stud (Structural S-Member)

#### DESCRIPTION

Steeler Structural Studs are S-members (C-sections) used as load-bearing and nonload-bearing studs and joists, and are available in depths (webs) ranging from 1.625" – 16", and in widths (flanges) ranging from 1.25" – 3.5".

#### MATERIALS

Studs are fabricated from 20 to 10 gauge hot dipped galvanized steel. Designated minimum steel thicknesses range from 33 mils – 118 mils and are made from steel coils conforming to ASTM A653 SS Grade 33, Grade 50, Class 1, or Grade 55 Mod 57, with a minimum G60 galvanized coating (other coatings are also available), ASTM A1003 Grade 33 Type H (ST33H), Grade 50 Type H (ST50H), or Grade 57.

#### COLOR CODE

Traditional	Elite
20S Gauge — White	33ES Gauge — Purple
18 Gauge — Yellow	43ES Gauge — Brown
16 Gauge — Green	54ES Gauge — Light Blue
14 Gauge — Orange	
12 Gauge — Red	
10 Gauge — Blue	

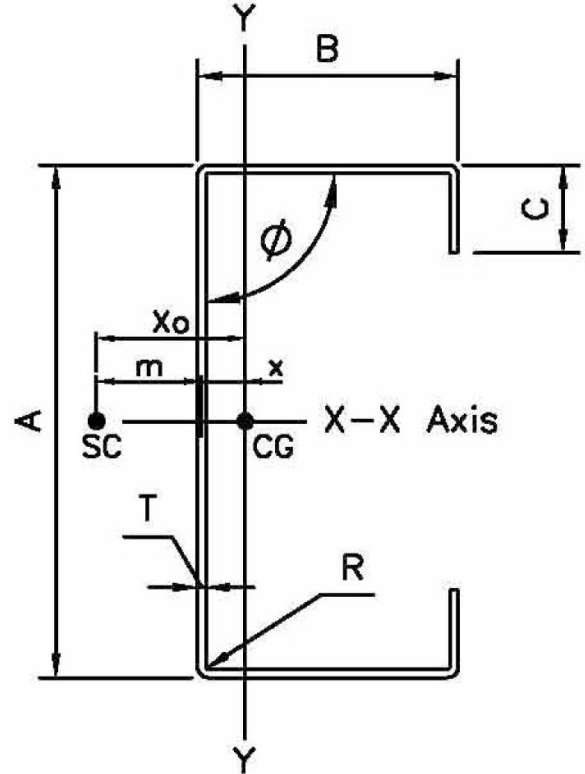
#### ASTM & CODE STANDARDS

- IBC 2009/2012
  - AISI NASPEC 2007
  - Meets or exceeds:
    - ASTM C754 & ASTM C955
    - ASTM E119 & E90
    - ASTM A370
    - ASTM A1003
    - ASTM C1513
- Please reference Steeler ICC-ES Report ESR-2054 for further information. Available for download at [www.steeler.com/technicalinfo.php](http://www.steeler.com/technicalinfo.php)

#### MANUFACTURER CONTACT INFORMATION

Seattle Plant | 10023 MLK Jr. Way S. Seattle, WA 98178 | P: 206-725-2500

Newark Plant | 6851 Smith Ave. Newark, CA 94560 | P: 510-505-9574



### STEELER S-Member

#### Traditional

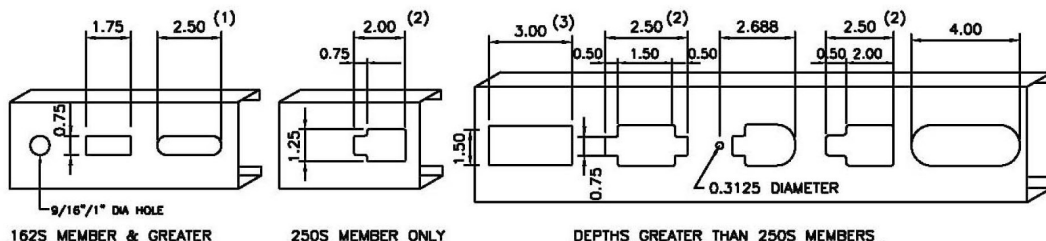
Member Gauge	Design Thickness (in.)	Minimum Thickness (in.)
20S	0.0346	0.0329
18	0.0451	0.0428
16	0.0566	0.0538
14	0.0713	0.0677
12	0.1017	0.0966
10	0.1242	0.118

#### Elite

Member Gauge	Design Thickness (in.)	Minimum Thickness (in.)
33ES	0.0295	0.0223
43ES	0.0400	0.0380
54ES	0.0505	0.0480

#### Notes:

1. All thicknesses are uncoated base metal thickness.
2. Minimum thickness equals 95% design thickness.



#### VARIOUS CENTERLINE PUNCHOUTS AVAILABLE

Note: 2.50" Diameter Punchout available on special order for depths 5.5" & greater

#### PUNCHOUT NOTES:

- (1) 18–54 mils 162S Only
- (2) 18–68 mils Only
- (3) 30–68 mils Only