

Stud (Structural S-Member)

DESCRIPTION

Steeler Structural Studs are S-members (C-sections) used as load-bearing and nonload-bearing studs and joists, and are available in depths (webs) ranging from 1.625" – 16", and in widths (flanges) ranging from 1.25" – 3.5".

MATERIALS

Studs are fabricated from 20 to 10 gauge hot dipped galvanized steel. Designated minimum steel thicknesses range from 33 mils – 118 mils and are made from steel coils conforming to ASTM A653 SS Grade 33, Grade 50, Class 1, or Grade 55 Mod 57, with a minimum G60 galvanized coating (other coatings are also available), ASTM A1003 Grade 33 Type H (ST33H), Grade 50 Type H (ST50H), or Grade 57.

COLOR CODE

Traditional	Elite
20S Gauge – White	33ES Gauge – Purple
18 Gauge – Yellow	43ES Gauge – Brown
16 Gauge – Green	54ES Gauge – Light Blue
14 Gauge – Orange	
12 Gauge – Red	
10 Gauge – Blue	

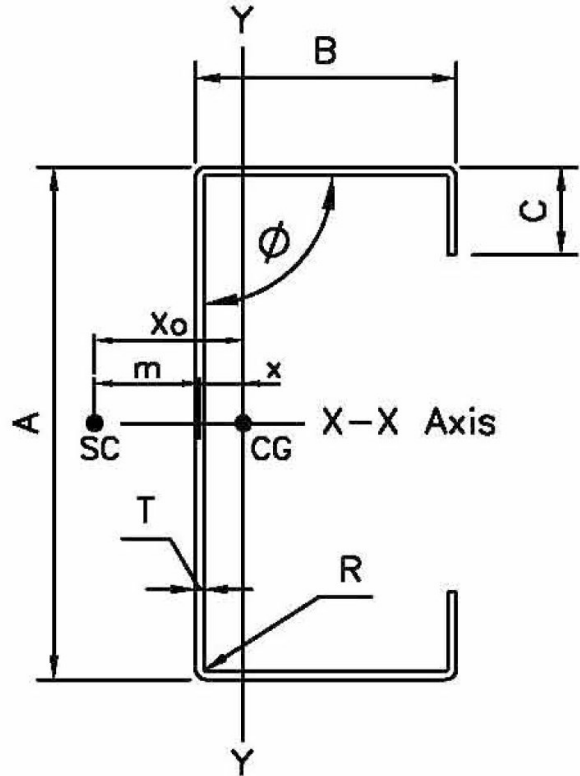
ASTM & CODE STANDARDS

- IBC 2009/2012
 - AISI NASPEC 2007
 - Meets or exceeds:
 - ASTM C754 & ASTM C955
 - ASTM E119 & E90
 - ASTM A370
 - ASTM A1003
 - ASTM C1513
- Please reference Steeler ICC-ES Report ESR-2054 for further information. Available for download at www.steeler.com/technicalinfo.php

MANUFACTURER CONTACT INFORMATION

Seattle Plant | 10023 MLK Jr. Way S. Seattle, WA 98178 | P: 206-725-2500

Newark Plant | 6851 Smith Ave. Newark, CA 94560 | P: 510-505-9574



STEELER S-Member

Traditional

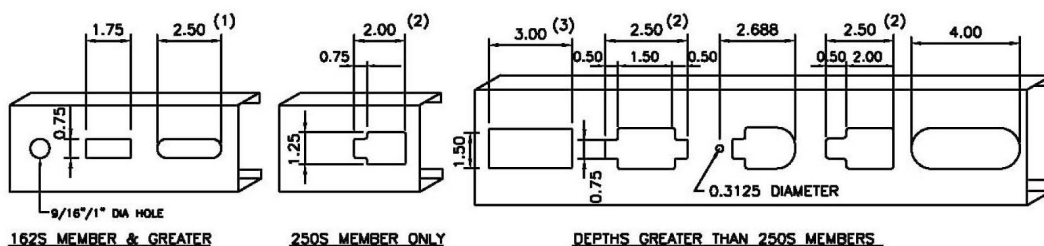
Member Gauge	Design Thickness (in.)	Minimum Thickness (in.)
20S	0.0346	0.0329
18	0.0451	0.0428
16	0.0566	0.0538
14	0.0713	0.0677
12	0.1017	0.0966
10	0.1242	0.118

Elite

Member Gauge	Design Thickness (in.)	Minimum Thickness (in.)
33ES	0.0295	0.0223
43ES	0.0400	0.0380
54ES	0.0505	0.0480

Notes:

1. All thicknesses are uncoated base metal thickness.
2. Minimum thickness equals 95% design thickness.



VARIOUS CENTERLINE PUNCHOUTS AVAILABLE

Note: 2.50" Diameter Punchout available on special order for depths 5.5" & greater

PUNCHOUT NOTES:

- (1) 18-54 mils 162S Only
- (2) 18-68 mils Only
- (3) 30-68 mils Only