

"C" Stud (Non-Structural)

DESCRIPTION

Steeler Non-Structural Studs are S-members (C-sections) used as non load-bearing studs and joists, and are available in depths (webs) ranging from 1.625" – 8", and in widths (flanges) ranging from 1.25" – 1.625". In general, centerline punchout widths are as follows: members between 162S and 250S are 0.75" wide; members 250S only are 1.25" wide; members greater than 250S are 1.5" wide.

MATERIALS

Studs are fabricated from 25 to DW20 gauge hot dipped galvanized steel. Designated minimum steel thicknesses range from 18 mils – 30 mils and are made from steel coils conforming to ASTM A653 S5 Grade 33, Grade 50, Class 1, or Grade 55 mod 57, with a minimum G40 galvanized coating (other coatings are available) or ASTM A1003 Nonstructural Grade 33, Grade 50, or Grade 57.

COLOR CODE

Traditional	Elite
25 Gauge – Clear	25TI Gauge – Clear/White Stripe
24 Gauge – Orange	20TI Gauge – Clear/Red Stripe
22 Gauge – Black	30ED Gauge – Red or Blue
20 Gauge Drywall – Pink	

ASTM & CODE STANDARDS

- IBC 2009/2012
 - AISI NASPEC 2007
 - Meets or exceeds:
 - ASTM C754 & ASTM C645
 - ASTM E119 & E90
 - ASTM A370
 - ASTM A1003
 - ASTM C1513
- Please reference Steeler ICC-ES Report ESR-2054 for further information. Available for download at www.steeler.com/technicalinfo.php

MANUFACTURER CONTACT INFORMATION

Seattle Plant | 10023 MLK Jr. Way S. Seattle, WA 98178 | P: 206-725-2500

Newark Plant | 6851 Smith Ave. Newark, CA 94560 | P: 510-505-9574

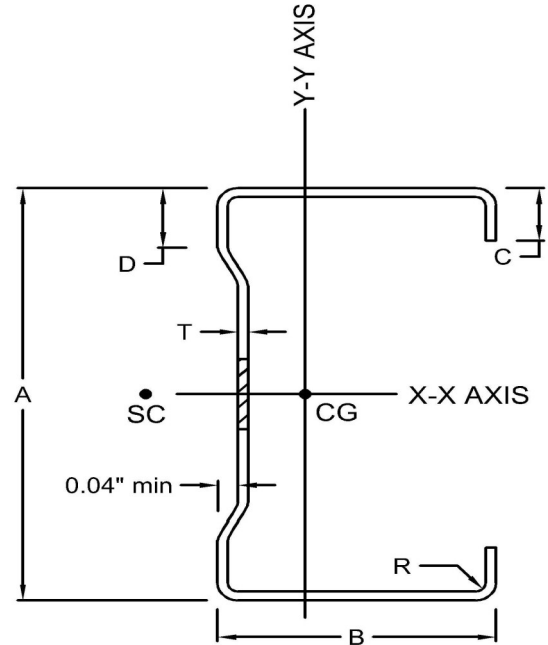


FIGURE 1: STEELER STUD

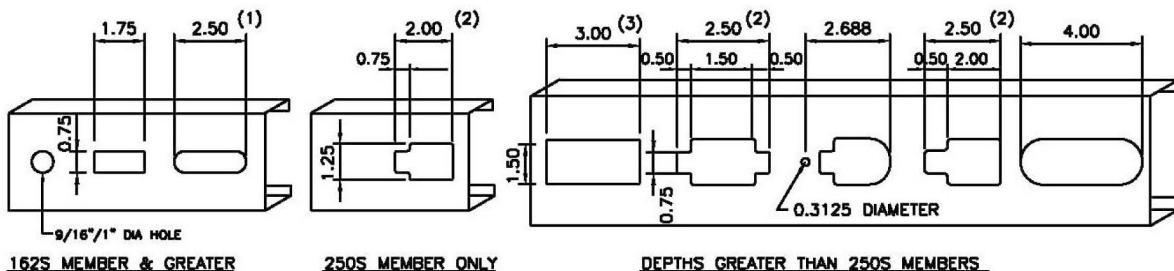
*Traditional gauges do not have web planking as shown.

Traditional

Member Gauge	Design Thickness (in.)	Minimum Thickness (in.)
25	0.0188	0.0179
24	0.0247	0.0235
22	0.0283	0.0269
20D	0.0312	0.0296

Elite

Member Gauge	Design Thickness (in.)	Minimum Thickness (in.)
25TI	0.0166	0.0158
20TI	0.0188	0.0179
30ED	0.0235	0.0223



VARIOUS CENTERLINE PUNCHOUTS AVAILABLE

Note: 2.50" Diameter Punchout available on special order for depths 5.5" & greater

PUNCHOUT NOTES:

- (1) 18-54 mils 162S Only
- (2) 18-68 mils Only
- (3) 30-68 mils Only