

Slotted Track

DESCRIPTION

Slotted Track are fabricated in 2-1/2", 3-1/2", 3-5/8", 4", 6", 8" and 10" widths. The flange size is 2-1/2" with 1-1/2 slots every 1" on center. Standard length is 10'-0".

MATERIALS

Slotted Track section is fabricated from hot dipped galvanized steel conforming to ASTM A653 Grade 33, 50, or 57.

COLOR CODE

| Traditional | Elite |
|-------------------|---------------------------|
| 24 Gauge — Orange | 30ED Gauge — Red and Blue |
| 22 Gauge — Black | 33ES Gauge — Purple |
| 20D Gauge — Pink | 43ES Gauge — Brown |
| 20S Gauge — White | 54ES Gauge — Light Blue |
| 18 Gauge — Yellow | |
| 16 Gauge — Green | |
| 14 Gauge — Orange | |

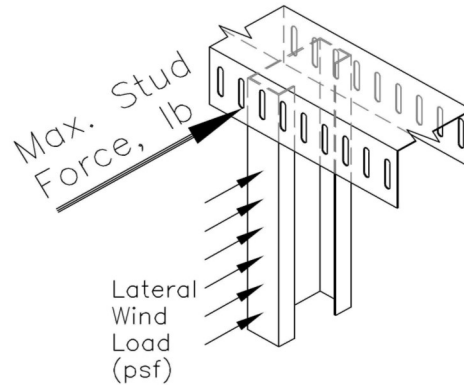
ASTM & CODE STANDARDS

- IBC 2009/2012
 - AISI NASPEC 2007
 - Meets or exceeds:
 - ASTM C754 & ASTM C645
 - ASTM E119 & E90
 - ASTM A370
 - ASTM A1003
 - ASTM C1513
- Please reference Steeler ICC-ES Report ESR-2054 for further information. Available for download at www.steeler.com/technicalinfo.php

MANUFACTURER CONTACT INFORMATION

Seattle Plant | 10023 MLK Jr. Way S. Seattle, WA 98178 | P: 206-725-2500

Newark Plant | 6851 Smith Ave. Newark, CA 94560 | P: 510-505-9574



STEELER C250 SLOTTED TRACK

CLASSIFICATION

Slotted Track has been cycle tested for 500 cycles in accordance with the 4th Edition of ANSI/UL 2079 (ASTM E1966) and is U.L. Classified for both the United States & Canada as Light Gauge Framing in various U.L. Head-Of-Wall Joint Systems.

U.L. Classified **XHLI.R21503** U.L. Classified for Canada **XHLI7.R21503**



STEELER Slotted Track: C250, Height Limits (Gap=0.625")

| Member-Gauge | Max. Stud Force, lb | Spacing in | Lateral Load applied to stud, psf | | | | | |
|------------------|---------------------|------------|-----------------------------------|---------|--------|--------|---------|----|
| | | | 5 | 10 | 15 | 20 | 25 | 30 |
| C250-24 (50 ksi) | 52 | 12 | 21'-0" | 10'-6" | 7'-0" | - | - | - |
| | 52 | 16 | 15'-9" | 7'-11" | - | - | - | |
| | 52 | 24 | 10'-6" | - | - | - | - | |
| C250-22 | 45 | 12 | 18'-2" | 9'-1" | 6'-1" | - | - | |
| | 45 | 16 | 13'-8" | 6'-10" | - | - | - | |
| | 45 | 24 | 9'-1" | - | - | - | - | |
| C250-20D | 55 | 12 | 22'-1" | 11'-1" | 7'-5" | - | - | |
| | 55 | 16 | 16'-7" | 8'-4" | - | - | - | |
| | 55 | 24 | 11'-1" | - | - | - | - | |
| C250-20S | 68 | 12 | 27'-2" | 13'-7" | 9'-1" | 6'-10" | - | |
| | 68 | 16 | 20'-4" | 10'-2" | 6'-10" | - | - | |
| | 68 | 24 | 13'-7" | 6'-10" | - | - | - | |
| C250-18 | 115 | 12 | 46'-1" | 23'-1" | 15'-5" | 11'-7" | 9'-3" | |
| | 140 | 16 | 42'-0" | 21'-0" | 14'-0" | 10'-6" | 8'-5" | |
| | 140 | 24 | 28'-0" | 14'-0" | 9'-4" | 7'-0" | - | |
| C250-16 (50 ksi) | 274 | 12 | 109'-6" | 54'-9" | 36'-6" | 27'-5" | 21'-11" | |
| | 274 | 16 | 82'-2" | 41'-1" | 27'-5" | 20'-7" | 16'-6" | |
| | 274 | 24 | 54'-9" | 27'-5" | 18'-3" | 13'-9" | 11'-0" | |
| C250-14 (50 ksi) | 366 | 12 | 146'-3" | 73'-2" | 48'-9" | 36'-7" | 29'-3" | |
| | 366 | 16 | 109'-9" | 54'-11" | 36'-7" | 27'-6" | 22'-0" | |
| | 366 | 24 | 73'-2" | 36'-7" | 24'-5" | 18'-4" | 14'-8" | |

See table notes on page 2.

Slotted Track



For CAD & BIM Drawings, Architectural Specifications and more, find Steeler on:

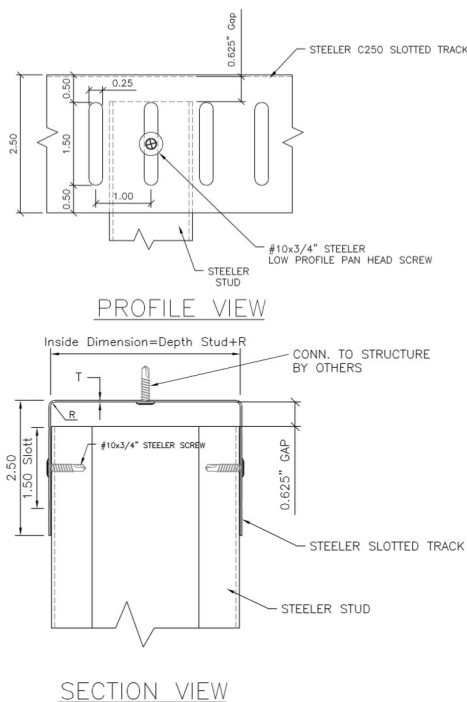


STEELER Slotted Track: C250, Height Limits (Gap=0.625")

| Member-Gauge | Max. Stud Force, lb | Spacing in | Lateral Load applied to stud, psf | | | | | |
|--------------------|---------------------|------------|-----------------------------------|---------|---------|--------|--------|--------|
| | | | 5 | 10 | 15 | 20 | 25 | 30 |
| C250-30ED (57 ksi) | 54 | 12 | 21'-8" | 10'-10" | 7'-3" | - | - | - |
| | 54 | 16 | 16'-3" | 8'-2" | - | - | - | - |
| | 54 | 24 | 10'-10" | - | - | - | - | - |
| C250-33ES (57 ksi) | 85 | 12 | 34'-1" | 17'-1" | 11'-5" | 8'-7" | 6'-10" | - |
| | 85 | 16 | 25'-7" | 12'-10" | 8'-7" | 6'-5" | - | - |
| | 85 | 24 | 17'-1" | 8'-7" | - | - | - | - |
| C250-43ES (57 ksi) | 156 | 12 | 62'-7" | 31'-4" | 20'-11" | 15'-8" | 12'-7" | 10'-6" |
| | 156 | 16 | 46'-11" | 23'-6" | 15'-8" | 11'-9" | 9'-5" | 7'-10" |
| | 156 | 24 | 31'-4" | 15'-8" | 10'-6" | 7'-10" | 6'-4" | - |
| C250-54ES (57 ksi) | 249 | 12 | 99'-9" | 49'-11" | 33'-3" | 25'-0" | 20'-0" | 16'-8" |
| | 273 | 16 | 82'-1" | 41'-1" | 27'-5" | 20'-7" | 16'-5" | 13'-9" |
| | 273 | 24 | 54'-9" | 27'-5" | 18'-3" | 13'-9" | 11'-0" | 9'-2" |

Table Notes:

1. Designed in accordance with AISI S211-07, Eq. B2.3-1
2. The horizontal distance from the web side of the stud to the terminating end of the track shall not be less than one half the effective track length (wdt) for height limits shown.
3. Deflection track must be connected to its support at a fastener spacing not greater than the stud spacing.
4. Effective widths (wdt) are limited to 12" for gauges 20S and thinner.



STEELER LEED® INFORMATION

LEED Credit MR 2: Steeler framing products are manufactured from cold-formed steel (CFS). CFS is 100% recyclable and therefore contributes significantly to LEED Credit MR 2. The specific contribution amounts will vary depending on the project and construction decisions.

LEED Credit MR 4: Steeler framing products contain a minimum of 26% post-consumer and 7% pre-consumer recycled steel content for a minimum of 33% recyclable. Recycled content of materials contributes to LEED Credits MR 4. If notified in advance, Steeler can order steel containing higher percentages of recycled content to meet your specific project needs. Contact Steeler technical services prior to ordering so we can help support your project goals.

