



# Product Specification and Submittal Form

## STUD (STRUCTURAL S-MEMBER)

### MANUFACTURER

Steeler, Inc.  
10023 Martin Luther King Jr. Way S.  
Seattle, WA 98178  
Phone: (206) 725-2500  
Fax: (206) 725-1700

Steeler, Inc.  
6851 Smith Ave.  
Newark, CA 94560  
Phone: (510) 505-9595  
Fax: (510) 505-0200

### DESCRIPTION

Steeler Structural Studs are S-members (C-sections) used as load-bearing and nonload-bearing studs and joists, and are available in depths (webs) ranging from 1.625" – 16", and in widths (flanges) ranging from 1.25" – 3.5".

### MATERIALS

Studs are fabricated from 20 to 10 gauge hot dipped galvanized steel. Designated minimum steel thicknesses range from 33 mils – 118 mils and are made from steel coils conforming to ASTM A653 SS Grade 33 or Grade 50, Class 1, with a minimum G60 galvanized coating (other coatings are also available), ASTM A1003 Structural Grade 33 Type H (ST33H), or ASTM A1003 Structural Grade 50 Type H (ST50H).

### ASTM & Code Standards

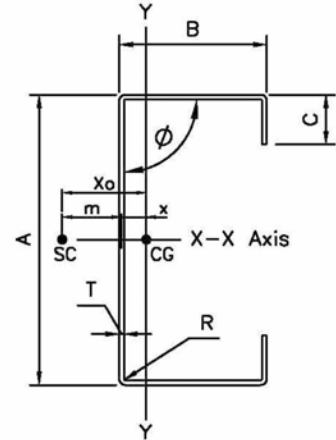
- AISI, North American Specification for the Design of Cold-Formed Steel Structural Members 2001 Edition with 2004 Supplement
- ASTM A370, Standard Test Methods and Definitions for Mechanical Testing of Steel Products
- ASTM A1003, Standard Specification for Sheet Steel, Carbon, Metallic and Non-Metallic Coating for Cold-Formed Framing Members.
- Steeler's structural framing comply with 2006 International Building Code (IBC- 2006)
- ASTM C955, Standard Specification for Structural Steel Framing Members.
- ASTM C754, Standard Specification for Installation of Steel Framing Members to Receive Screw-Attached Gypsum Panel Products.
- ASTM C1513, Standard Specification for Steel Tapping Screws for Cold-Formed Steel Framing Connections.

### RECOGNITION

Steeler ICC-ES Report ESR-2054

### COLOR CODE

33 mil - White  
43 mil - Yellow  
54 mil - Green  
68 mil - Orange  
97 mil - Red  
118 mil - Blue  
Painted on ends.

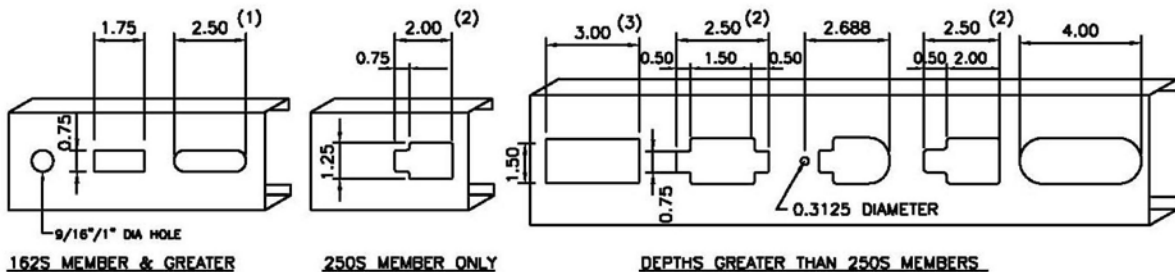


STEELER S-Member

Designated Member Thickness (mils=0.001")	Design Thickness (in.)	Minimum Thickness (in.)
33	0.0346	0.0329
43	0.0451	0.0428
54	0.0566	0.0538
68	0.0713	0.0677
97	0.1017	0.0966
118	0.1242	0.118

### NOTES:

1. ALL THICKNESSES ARE UNCOATED BASE METAL THICKNESS.
2. MINIMUM THICKNESS EQUALS 95% DESIGN THICKNESS.



### VARIOUS CENTERLINE PUNCHOUTS AVAILABLE

Note: 2.50" Diameter Punchout available on special order for depths 5.5" & greater

### PUNCHOUT NOTES:

- (1) 18-54 mils 162S Only
- (2) 18-68 mils Only
- (3) 30-68 mils Only