



Product Specification and Submittal Form

STUD (NON-STRUCTURAL NONLOAD-BEARING)

MANUFACTURER

Steeler, Inc.
10023 Martin Luther King Jr. Way S.
Seattle, WA 98178
Phone: (206) 725-2500
Fax: (206) 725-1700

Steeler, Inc.
6851 Smith Ave.
Newark, CA 94560
Phone: (510) 505-9595
Fax: (510) 505-0200

DESCRIPTION

Steeler Non-structural Studs are S-members (C-sections) used as nonload-bearing studs and joists, and are available in depths (webs) ranging from 1.625" – 8", and in widths (flanges) ranging from 1.25" – 1.625".

MATERIALS

Studs are fabricated from **25 to DW20 gauge** hot dipped galvanized steel. Designated minimum steel thicknesses range from 18 mils – 30 mils and are made from steel coils conforming to ASTM A653 SS Grade 33 or Grade 50, Class 1, with a minimum G40 galvanized coating (other coatings are available) or ASTM A1003 Nonstructural Grade 33.

ASTM & Code Standards

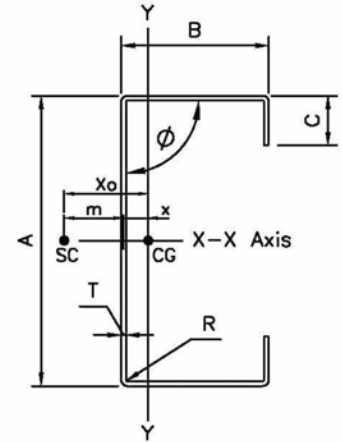
- AISI, North American Specification for the Design of Cold-Formed Steel Structural Members 2001 Edition with 2004 Supplement
- ASTM A370, Standard Test Methods and Definitions for Mechanical Testing of Steel Products
- ASTM A1003, Standard Specification for Sheet Steel, Carbon, Metallic and Non-Metallic Coating for Cold-Formed Framing Members.
- Steeler's structural framing comply with 2006 International Building Code (IBC– 2006)
- ASTM C754, Standard Specification for Installation of Steel Framing Members to Receive Screw-Attached Gypsum Panel Products.
- ASTM C1513, Standard Specification for Steel Tapping Screws for Cold-Formed Steel Framing Connections.
- ASTM C645, Standard Specification for Nonstructural Steel Framing Members.

RECOGNITION

Steeler ICC-ES Report ESR-2054.

COLOR CODE

18 mil - Clear
24 mil - Brown
27 mil - Black
30 mil - Pink
Painted on ends.

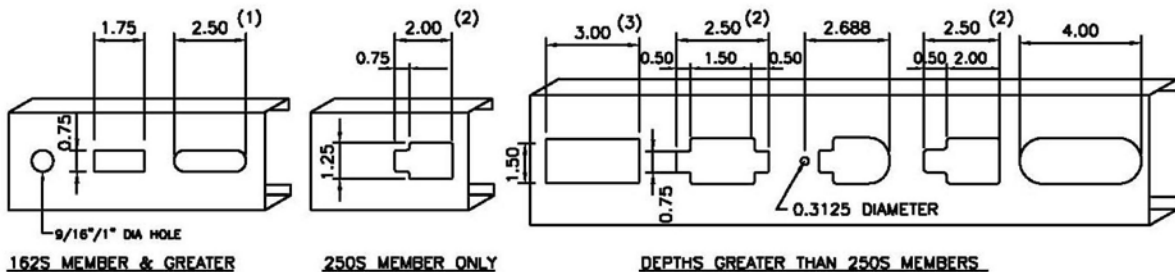


STEELER S-Member

Designated Member Thickness (mils=0.001")	Design Thickness (in.)	Minimum Thickness (in.)
18	0.0188	0.0179
24	0.0247	0.0235
27	0.0283	0.0269
30	0.0312	0.0296

NOTES:

1. ALL THICKNESSES ARE UNCOATED BASE METAL THICKNESS.
2. MINIMUM THICKNESS EQUALS 95% DESIGN THICKNESS.



VARIOUS CENTERLINE PUNCHOUTS AVAILABLE

Note: 2.50" Diameter Punchout available on special order for depths 5.5" & greater

PUNCHOUT NOTES:

- (1) 18–54 mils 162S Only
- (2) 18–68 mils Only
- (3) 30–68 mils Only