

Product Specification and Submittal Form

Slotted Track

MANUFACTURER

Steeler, Inc.
10023 Martin Luther King Jr. Way S.
Seattle, WA 98178
Phone: (206) 725-2500
Fax: (206) 725-1700

Steeler, Inc.
6851 Smith Ave.
Newark, CA 94560
Phone: (510) 505-9595
Fax: (510) 505-0200

DESCRIPTION

Slotted Track are fabricated in 2-1/2", 3-1/2", 3-5/8", 4", 6", 8" and 10" widths. The Flange size is 2-1/2" with 1-1/2" slots every 1" on center. Standard length is 10'-0".

ASTM & Code Standards

- AISI, North American Specification for the Design of Cold-Formed Steel Structural Members 2001 Edition with 2004 Supplement
- ASTM A370, Standard Test Methods and Definitions for Mechanical Testing of Steel Products
- ASTM A1003, Standard Specification for Sheet Steel, Carbon, Metallic and Non-Metallic Coating for Cold-Formed Framing Members.
- Steeler's structural framing comply with 2006 International Building Code (IBC- 2006)
- ASTM C955, Standard Specification for Structural Steel Framing Members.
- ASTM C645, Standard Specification for Nonstructural Steel Framing Members.
- ASTM C754, Standard Specification for Installation of Steel Framing Members to Receive Screw-Attached Gypsum Panel Products.
- ASTM C1513, Standard Specification for Steel Tapping Screws for Cold-Formed Steel Framing Connections.

MATERIALS

Slotted Track section is fabricated from hot dipped galvanized steel conforming to ASTM A653 or equal.

CLASSIFICATION

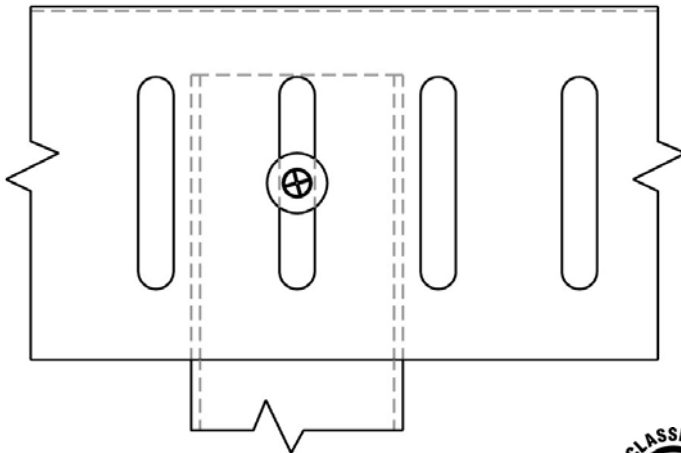
Slotted Track has been cycle tested for 500 cycles in accordance with the 4th Edition of ANSI/UL 2079 (ASTM E1966) and is U.L. Classified for both the United States & Canada as Light Gauge Framing in various U.L. Head-Of-Wall Joint Systems.

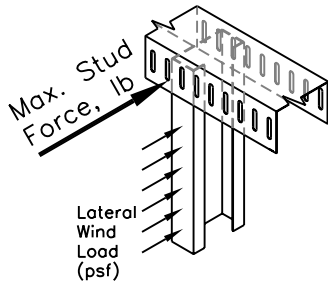
U.L. Classified XHLI.R21503

U.L. Classified for Canada XHLI7.R21503

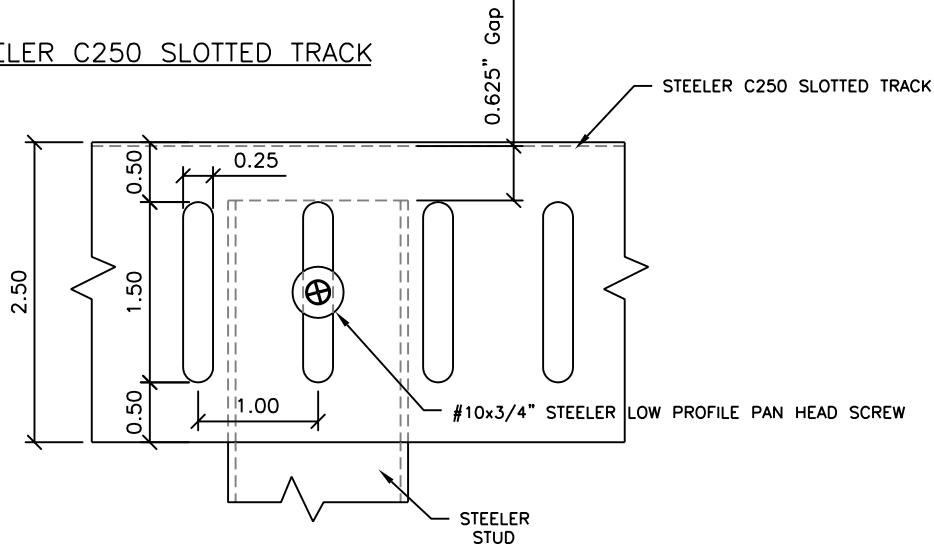
COLOR CODE

24 mil - Brown
30 mil - Pink
33 mil - White
43 mil - Yellow
54 mil - Green
68 mil - Orange
97 mil - Red
Painted on ends.





STEELER C250 SLOTTED TRACK



DETAIL SLOTTED TRACK

TABLE for STEELER Slotted Track: C250, Gap=0.625" Height, ft & Thickness, mils

| Member ID | Max. Stud Force, lb | Spacing in | Lateral Load applied to stud, psf | | | | | |
|---------------------|---------------------|------------|-----------------------------------|--------|-------|-------|-------|-------|
| | | | 5 | 10 | 15 | 20 | 25 | 30 |
| C250-24 (50 ksi) | 58 | 12 | 23.23 | | | | | |
| | 58 | 16 | 17.42 | | | | | |
| | 58 | 24 | 11.61 | | | | | |
| C250-27 | 50 | 12 | 20.09 | | | | | |
| | 50 | 16 | 15.07 | | | | | |
| | 50 | 24 | 10.05 | | | | | |
| C250-30 | 61 | 12 | 24.45 | | | | | |
| | 61 | 16 | 18.34 | | | | | |
| | 61 | 24 | 12.23 | | | | | |
| C250-33 | 75 | 12 | 30.12 | 15.06 | 10.04 | | | |
| | 75 | 16 | 22.59 | 11.29 | 7.53 | | | |
| | 75 | 24 | 15.06 | 7.53 | 5.02 | | | |
| C250-43 | 129 | 12 | 51.41 | 25.70 | 17.14 | 12.85 | 10.28 | 8.57 |
| | 129 | 16 | 38.56 | 19.28 | 12.85 | 9.64 | 7.71 | 6.43 |
| | 129 | 24 | 25.70 | 12.85 | 8.57 | 6.43 | 5.14 | 4.28 |
| C250-54 (50 ksi) | 314 | 12 | 125.46 | 62.73 | 41.82 | 31.37 | 25.09 | 20.91 |
| | 314 | 16 | 94.10 | 47.05 | 31.37 | 23.52 | 18.82 | 15.68 |
| | 314 | 24 | 62.73 | 31.37 | 20.91 | 15.68 | 12.55 | 10.46 |
| C250-68 (50 ksi) | 515 | 12 | 205.92 | 102.96 | 68.64 | 51.48 | 41.18 | 34.32 |
| | 515 | 16 | 154.44 | 77.22 | 51.48 | 38.61 | 30.89 | 25.74 |
| | 515 | 24 | 102.96 | 51.48 | 34.32 | 25.74 | 20.59 | 17.16 |

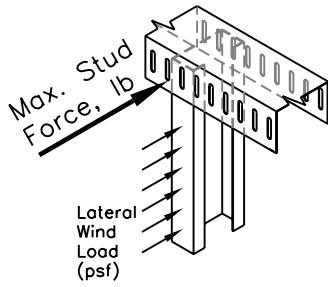
Notes:

1. Maximum Stud Force is based on calculations:
2. $beff=3.625"$, $e=[(0.50+(1.50/2)-T-R)]/2$, $Pn=(beff*T^2*Fy)/(4*e)$, $Pa=Pn/SF$, $SF=1.67$, $Max\ Stud\ Force=2*Pa$

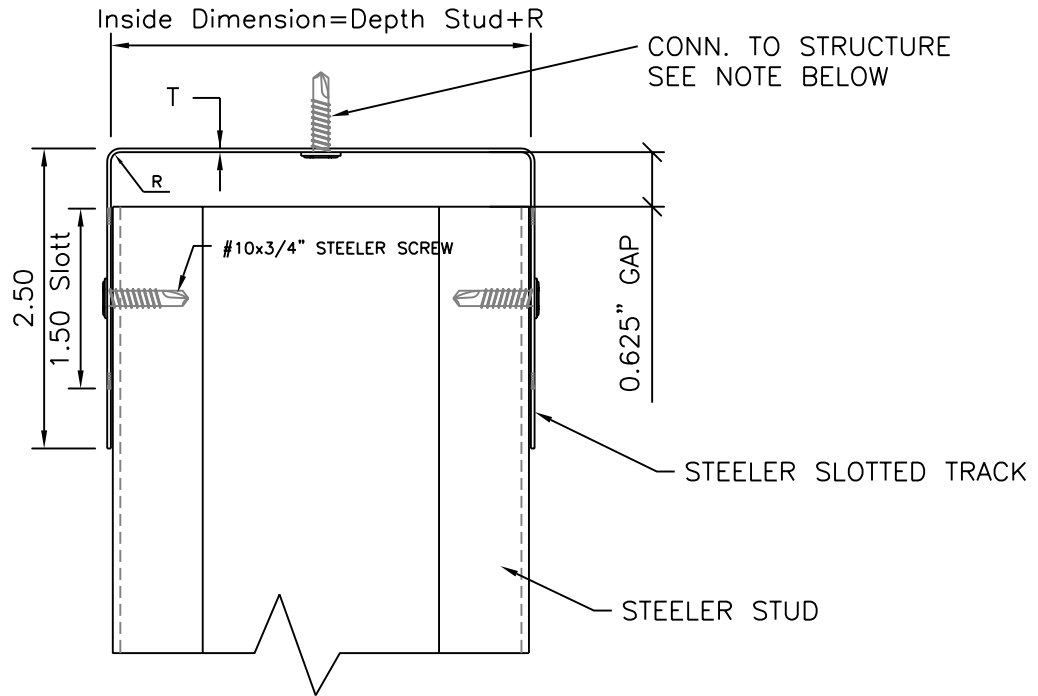
STEELER C250 SLOTTED TRACK

DATE: 14 Jan. 2011

SHEET: ST-1



STEELER C250 SLOTTED TRACK



SECTION THRU. SLOTTED TRACK

NOTE: DESIGN OF CONN. TO STRUCTURE BY OTHERS.
MINIMUM DESIGN FORCE PER TABLE

STEELER C250 SLOTTED TRACK

DATE: 14 Jan. 2011

SHEET: ST-2