



Product Specification and Submittal Form

12 SRC (Resilient Channel)

MANUFACTURER

Steeler, Inc.
10023 Martin Luther King Jr. Way S.
Seattle, WA 98178
Phone: (206) 725-2500
Fax: (206) 725-1700

Steeler, Inc.
6851 Smith Ave.
Newark, CA 94560
Phone: (510) 505-9595
Fax: (510) 505-0200

DESCRIPTION

SRC (Sound Resilient Channel) is available in 18 mil (25 gauge). SRC is available in standard lengths of 12 feet and can be made to order. Hemming is available on 1 -1/4" SRC and is required for 1 -1/2" SRC.

ASTM & Code Standards

- AISI, North American Specification for the Design of Cold-Formed Steel Structural Members 2001 Edition with 2004 Supplement
- ASTM A370, Standard Test Methods and Definitions for Mechanical Testing of Steel Products
- ASTM A1003, Standard Specification for Sheet Steel, Carbon, Metallic and Non-Metallic Coating for Cold-Formed Framing Members.
- Steeler's structural framing comply with 2006 International Building Code (IBC- 2006)
- ASTM C645, Standard Specification for Nonstructural Steel Framing Members.
- ASTM C754, Standard Specification for Installation of Steel Framing Members to Receive Screw-Attached Gypsum Panel Products.
- ASTM C1513, Standard Specification for Steel Tapping Screws for Cold-Formed Steel Framing Connections.

CERTIFICATION

Lab Certified STC 56 Rated Product for assemblies requiring higher STC ratings as stipulated by the Uniform Building Code (**Report No. TL06-287; Dated August 1, 2006**). Tested according to the provisions and requirements of ASTM E 90-04, Standard Test Methods for Laboratory Measurement of Airborne Sound Transmission Loss of Building Partitions.

REFERENCES

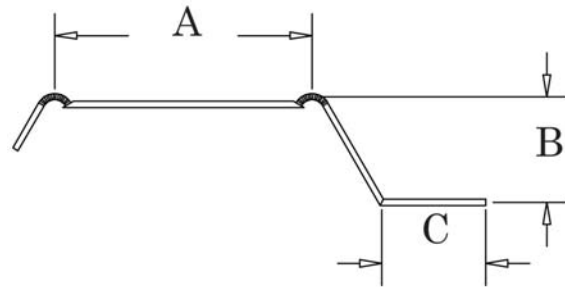
- Gypsum Association Fire Design Manual 2000
- AISI-NASPEC 2004

MATERIALS

18 mil (25 gauge) section is fabricated from hot dipped galvanized steel conforming to ASTM A653.

COLOR CODE

Clear



A = 1-1/4" or 1-1/2"
B = 1/2"
C = 7/16" minimum