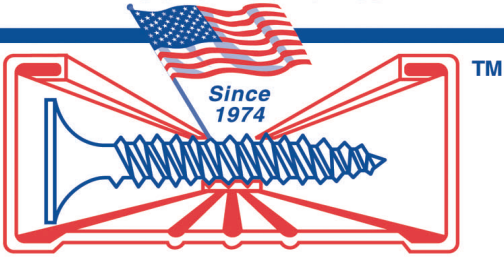


**STEELER® INC.**  
DRYWALL CONSTRUCTION SUPPLY



[www.steeler.com](http://www.steeler.com)

# Submittal Cover Page

**MANUFACTURER:**

Steeler, Inc.  
10023 Martin Luther King Jr. Way S.  
Seattle, WA 98178  
Phone: (206) 725-2500  
Fax: (206) 725-1700

Steeler, Inc.  
6851 Smith Ave.  
Newark, CA 94560  
Phone: (510) 505-9595  
Fax: (510) 505-0200

**DATE:** .....

**PROJECT NAME:** .....

**PROJECT LOCATION:** .....

**ARCHITECT:** .....

**CONTRACTOR:** .....

**FRAMING SUBCONTRACTOR:** .....

**CONTACT:** .....



# Product Specification and Submittal Form

## 12 SRC (Resilient Channel)

### MANUFACTURER

Steeler, Inc.  
10023 Martin Luther King Jr. Way S.  
Seattle, WA 98178  
Phone: (206) 725-2500  
Fax: (206) 725-1700

Steeler, Inc.  
6851 Smith Ave.  
Newark, CA 94560  
Phone: (510) 505-9595  
Fax: (510) 505-0200

### DESCRIPTION

**SRC (Sound Resilient Channel)** is available in 18 mil (25 gauge). SRC is available in standard lengths of 12 feet and can be made to order. Hemming is available on 1 -1/4" SRC and is required for 1 -1/2" SRC.

### ASTM & Code Standards

- AISI, North American Specification for the Design of Cold-Formed Steel Structural Members 2001 Edition with 2004 Supplement
- ASTM A370, Standard Test Methods and Definitions for Mechanical Testing of Steel Products
- ASTM A1003, Standard Specification for Sheet Steel, Carbon, Metallic and Non-Metallic Coating for Cold-Formed Framing Members.
- Steeler's structural framing comply with 2006 International Building Code (IBC- 2006)
- ASTM C645, Standard Specification for Nonstructural Steel Framing Members.
- ASTM C754, Standard Specification for Installation of Steel Framing Members to Receive Screw-Attached Gypsum Panel Products.
- ASTM C1513, Standard Specification for Steel Tapping Screws for Cold-Formed Steel Framing Connections.

### CERTIFICATION

**Lab Certified STC 56 Rated Product** for assemblies requiring higher STC ratings as stipulated by the Uniform Building Code (**Report No. TL06-287; Dated August 1, 2006**). Tested according to the provisions and requirements of ASTM E 90-04, Standard Test Methods for Laboratory Measurement of Airborne Sound Transmission Loss of Building Partitions.

### REFERENCES

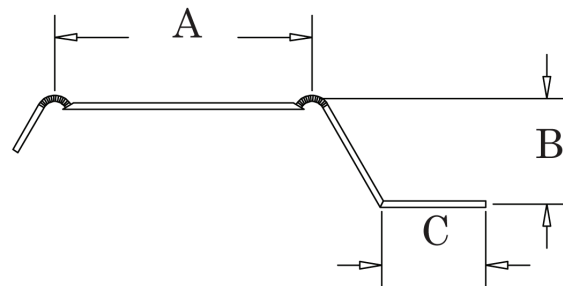
- Gypsum Association Fire Design Manual 2000
- AISI-NASPEC 2004

### MATERIALS

**18 mil (25 gauge)** section is fabricated from hot dipped galvanized steel conforming to ASTM A653.

### COLOR CODE

Clear



A = 1-1/4" or 1-1/2"  
B = 1/2"  
C = 7/16" minimum