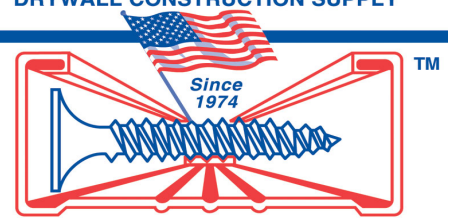


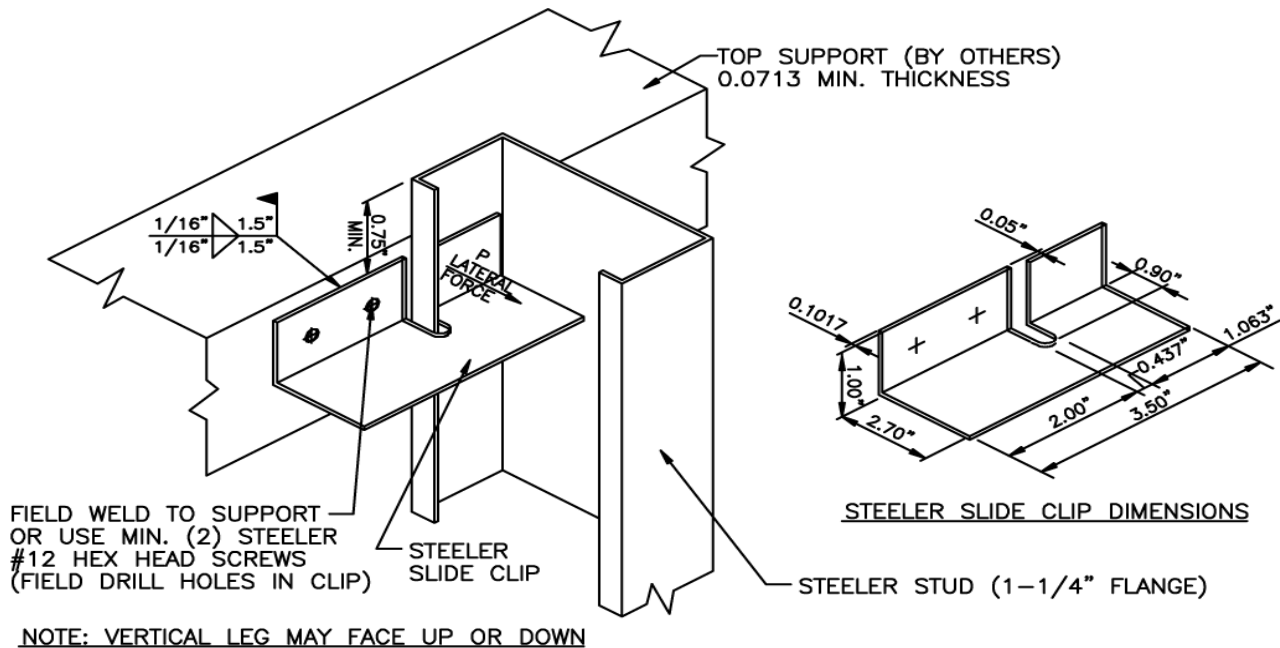
STEELER Engineered Slide Clip

1-800-275-2279



www.steeler.com

Building structures move with dead, live and snow loads, wind and seismic forces, and temperature changes. **STEELER** has designed and engineered a slide clip that isolates the non-load wall system from the structure. The **STEELER** slide clip allows the structure to deflect vertically for any designed vertical deflection and its simple design saves time and money compared to other products and installation methods.



STEELER SLIDE CLIP DETAIL

Part Number 350BS112VSC (12 Ga) 0.1017"

SLIDE CLIP ALLOWABLE LATERAL FORCE, POUNDS					
Stud Properties					
Flange Width, in.	Thick. in.	Yield Fy, ksi	P(33ksi) lbs	Yield Fy, ksi	P(50ksi) lbs
1.25	0.0188	33	50	50	80
1.25	0.0283	33	125	50	190
1.25	0.0346	33	190	50	290
1.25	0.0451	33	340	50	420*
1.25	0.0566	33	420*	50	420*
1.25	0.0713	33	420*	50	420*
1.25	0.1017	33	420*	50	420*

Notes

1. Allowable Lateral Forces include 1.33 stress increase for wind and seismic loading.
2. * Indicates load is controlled by clip bending.
3. Special clips can be designed for other conditions.



EXPIRES 07/27/03

SIGNED: 1-17-2002
 BY: HD JETER

Consult with your Engineering firm before using this product.

10023 Martin Luther King Jr Way South, Seattle, WA 98178 - 1-800-275-2279 - 206-725-1700 FAX