

QuietRock® System

Installation Instructions

(For QuietRock® 510, 530 and 545 versions)

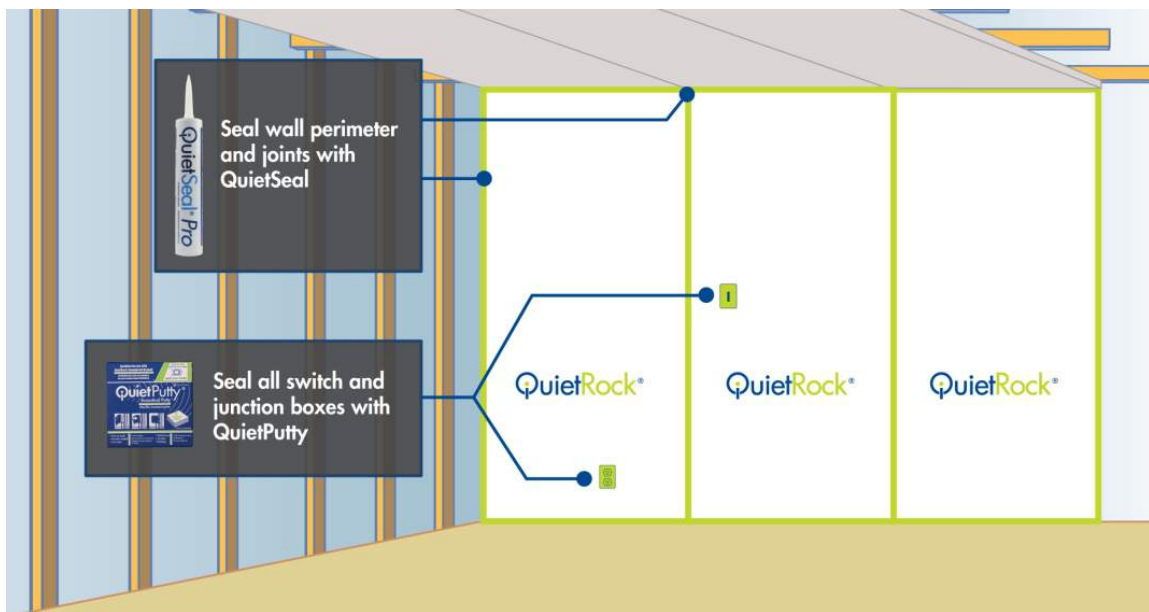
IMPORTANT:

- Hang QuietRock® immediately or store flat in a dry location
- Do not store QuietRock® in direct sunlight.
- Avoid exposure to moisture during storage, construction, and installation. See GA 216 - 2013 - Item 3 as a reference.
- Do not cover with plastic for extended periods. See GA 216 - 2013, Item 3.2.1
- Using the complete QuietRock® System (QuietRock®, QuietSeal® Pro, and QuietPutty®) is important in order to maximize and maintain the acoustic performance of assemblies:
 - Acoustic sealants/ caulking such as QuietSeal® Pro, shall be used around the perimeter and unbacked seams.
 - Acoustical putty, such as QuietPutty®, shall be used with electrical outlets, HVAC ducts, water hookups, cables or other penetrations.

QuietSeal® Pro and QuietPutty® are designed to prevent sound leaks. The omission of these products may compromise the acoustical rating of the assembly.

Completely read the instructions below before beginning installation and be sure to always follow all OSHA safety guidelines when installing any PABCO® Gypsum product.

THE QUIET SYSTEM



QUIETPUTTY®: WRAP ELECTRICAL OUTLETS AND SEAL PENETRATIONS TO PREVENT NOISE LEAKS

QuietPutty® has been specifically formulated to maintain the performance of acoustically rated walls with penetrations. It is designed to acoustically seal electrical, phone and other penetrations. No tools are required. To ensure adequate adhesion, all surfaces shall be clean and free of dust, grease, oil, loose materials, rust or other substances.



1. Inspect the outlet box to make sure it is properly installed and free of dust, grease, oil, loose materials, rust or other substances. Remove the release paper from both sides of the QuietPutty® pad.



2. Starting at side, align the QuietPutty® pad to front edge of box and overlap onto the stud. Cut the QuietPutty® pad to allow the pad to fit around conduits or cables.



3. Pleat the extra material at the corners. Fold the pleated corners into place and firmly press the QuietPutty® pad into place so that the entire surface of the back of the outlet box is covered and sealed against drywall stud.

QUIETROCK®: APPLY TO ASSEMBLY TO REDUCE NOISE BETWEEN PARTITIONS

QuietRock® panels are designed to take the place of multiple layers of drywall as well as other outdated noise reduction methods. QuietRock® can be used with a variety of standard framing techniques, stud types, and configurations (single, staggered or double stud construction).

Install per ASTM standard or gypsum association guidelines

- Standard Specification for Application and Finishing of Gypsum Board ASTM C 840-04
- Recommended Levels of Gypsum Board Finish: GA-214
- Application and Finishing Gypsum Panel Product: GA-216

Cutting QuietRock Panels:

- 1) QuietRock panels may be scored with a carbide cutter. We have found that the best blade is the Irwin Blue Blade (available at most building supply dealers). It may be simpler and quicker to use an electric drywall saw (e.g. a worm drive Skilsaw) with a vacuum attachment and a Rotozip with carbide blades for cutouts and corners.



Score



Snap



Hang

Hang as usual:

- 1) Secure QuietRock panel to the studs using appropriate Bugle Head drywall screws every 12" or as required by code. Use coarse thread for wood studs and fine thread for metal studs. Nails may also be used only on wood studs. You may also place QuietRock over existing drywall in retrofit applications. **Do not structural glue, when hanging QuietRock.** Note: For ease of wall finishing, it is advised that the QuietRock 545 be installed with the Magnesium Oxide board closest to the interior of the wall cavity..
- 2) Finish securing the QuietRock® panel to the studs with drywall screws per GA-216 4.8.3.2. Screws shall be driven so that screw heads are slightly below the gypsum panel product surface without braking the face paper, fracturing the core, or stripping the framing member.

QUIETSEAL® PRO: PROPERLY SEAL AROUND PERIMETER OF WALL, FLOOR, CEILING, PENETRATIONS AND ANY SEAM UNBACKED BY A STUD TO MAINTAIN HIGH ACOUSTIC PERFORMANCE

- 1) Clean all surfaces before installation so they are free of dirt, grease, wax, dust, corrosion, moisture or any material that may interfere with obtaining optimum adhesion
- 2) For new construction before the top and bottom stud plates and end studs are installed, run two 1/8"-3/8" beads of QuietSeal® Pro between them and the wall, floor and ceiling.
- 3) Apply a 1/4" bead of QuietSeal® Pro around the perimeter of the wall or floor/ceiling assembly. Ensure that the QuietSeal® Pro is airtight between the QuietRock® panels and the adjacent wall floor or ceiling.
- 4) For the best acoustic isolation, apply QuietSeal® around the perimeter of each panel before putting up the next sheet.
- 5) Seal around all electrical and plumbing outlets with QuietSeal® Pro.



Tips

For gaps larger than 3/8", fill the gap with a pre-molded loose-cell filler or backer rod prior to applying QuietSeal® Pro.

When using on the edges of the panels, the adjacent sheet of QuietRock® should "squeeze" the QuietSeal® Pro in between them.

Be sure to remove excess QuietSeal® Pro with a rag or putty knife as needed. Wipe off any excess QuietSeal® Pro.

DO NOT LEAVE QUIETSEAL® PRO ON THE SURFACE, AS IT CAN INTERFERE WITH TAPE, MUD, PAINT AND OTHER FINISHING STEPS.

SURFACE FINISH PER ASTM STANDARD

- Standard Practice for Use of Sealants in Acoustical Applications: ASTM C919-08

Using QuietRock® in Ceiling Construction

To use QuietRock® panels on a ceiling application, simply follow the above instructions for walls. **CONSULT LOCAL BUILDING CODES FOR SCREW PLACEMENT.** It is advised that you use a drywall lift to install any drywall on ceilings properly. **QuietRock 500 and 510 is not recommend for ceiling application alone or over existing drywall due to possible sagging concerns.**

Fire Resistance Information

- Check www.QuietRock.com website or [UL website](#) for fire rating information.
- Check with code authority to verify that QuietRock® panels can be added to your specific assembly

GENERAL NOTES

Sound Assemblies:

QuietRock® to be installed using Industry Sound Assembly Guidelines as follows:

- Demising walls/Sound Compartments must run deck to deck to avoid flanking
- Avoid penetration/outlet back to back stud placement- alternate stud cavities
- Panels should be isolated from floor to ceiling and adjacent walls, then sealed with sound sealant such as QuietSeal® Pro per ASTM E-90 standard
- Use backer-rod in areas greater than 3/8" before applying QuietSeal® Pro

Follow all OSHA guidelines when completing any construction project. Use normal care and precaution when working with PABCO® Gypsum's products.

QuietPutty®:

- Cleanup with soap and water.
- Dispose of excess QuietPutty® in the same responsible manner as you would any building material.

QuietRock®:

- Lift the panels using OSHA guidelines, e.g. do not bend over and lift using back muscles; instead use the leg muscles.
- When cutting or scoring large amounts of drywall, follow OSHA regulations concerning exposure to gypsum dust, including wearing appropriate protective masks if ventilation required.
- Dispose of excess QuietRock® in the same responsible manner as you would any building material.
- Ensure there is adequate ventilation and temperatures are maintained within the range of 50° - 95°F (10° - 35°C) during the finishing process. See ASTM C 840 Section 4 "Environmental Conditions" for additional details.

QuietSeal® Pro:

- QuietSeal® Pro can be easily removed with soap and water. Wear disposable gloves, for easier clean-up.
- Dispose of in accordance with applicable federal, state, and local regulations.

For further information see the Material Safety Datasheet (MSDS) on line at www.QuietRock.com.